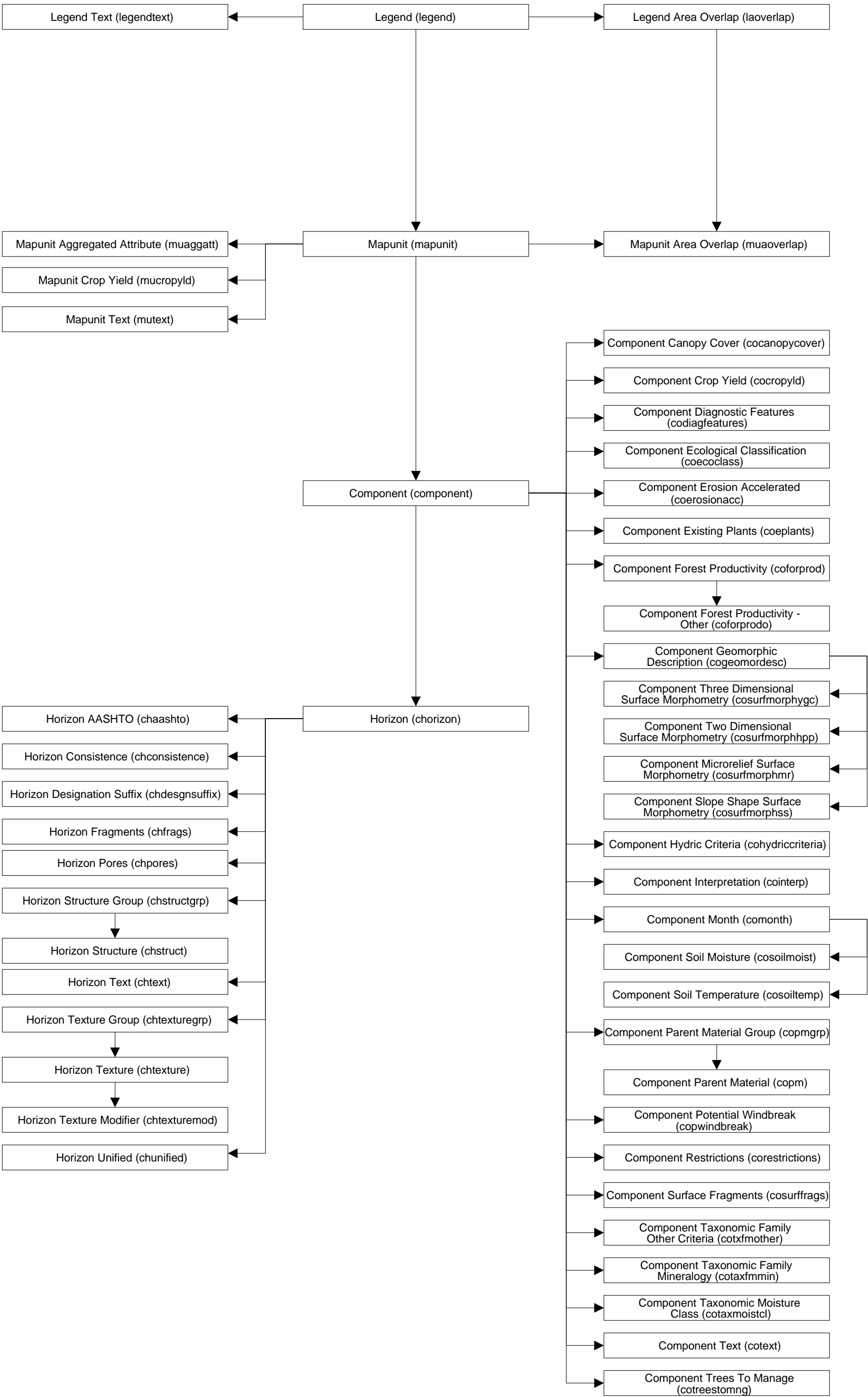
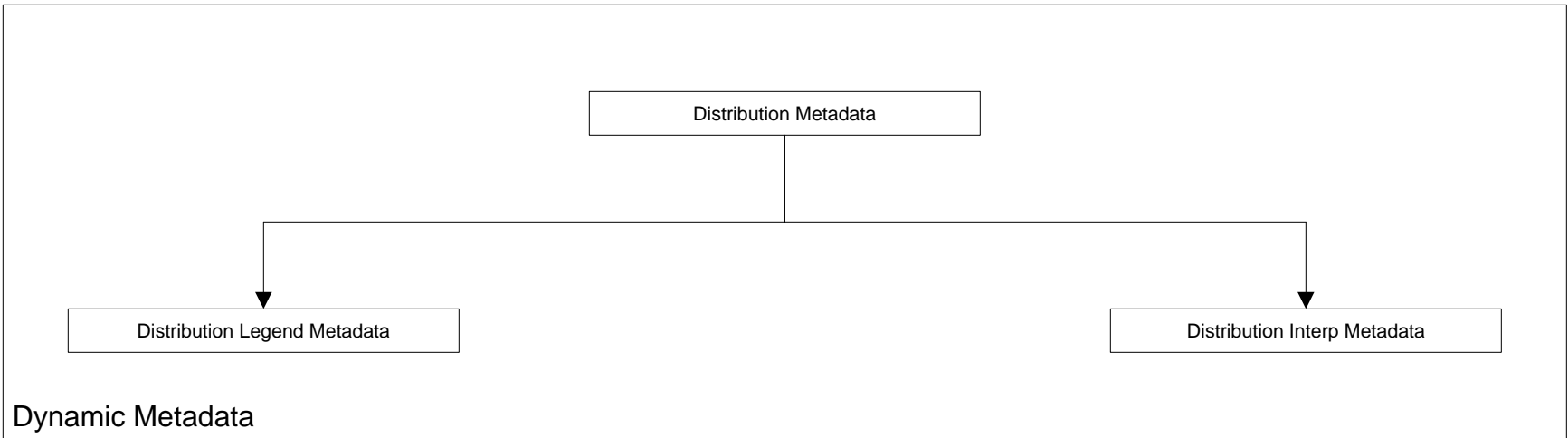


SSURGO 2.2 Tabular Data Structure  
Soil Data Tables

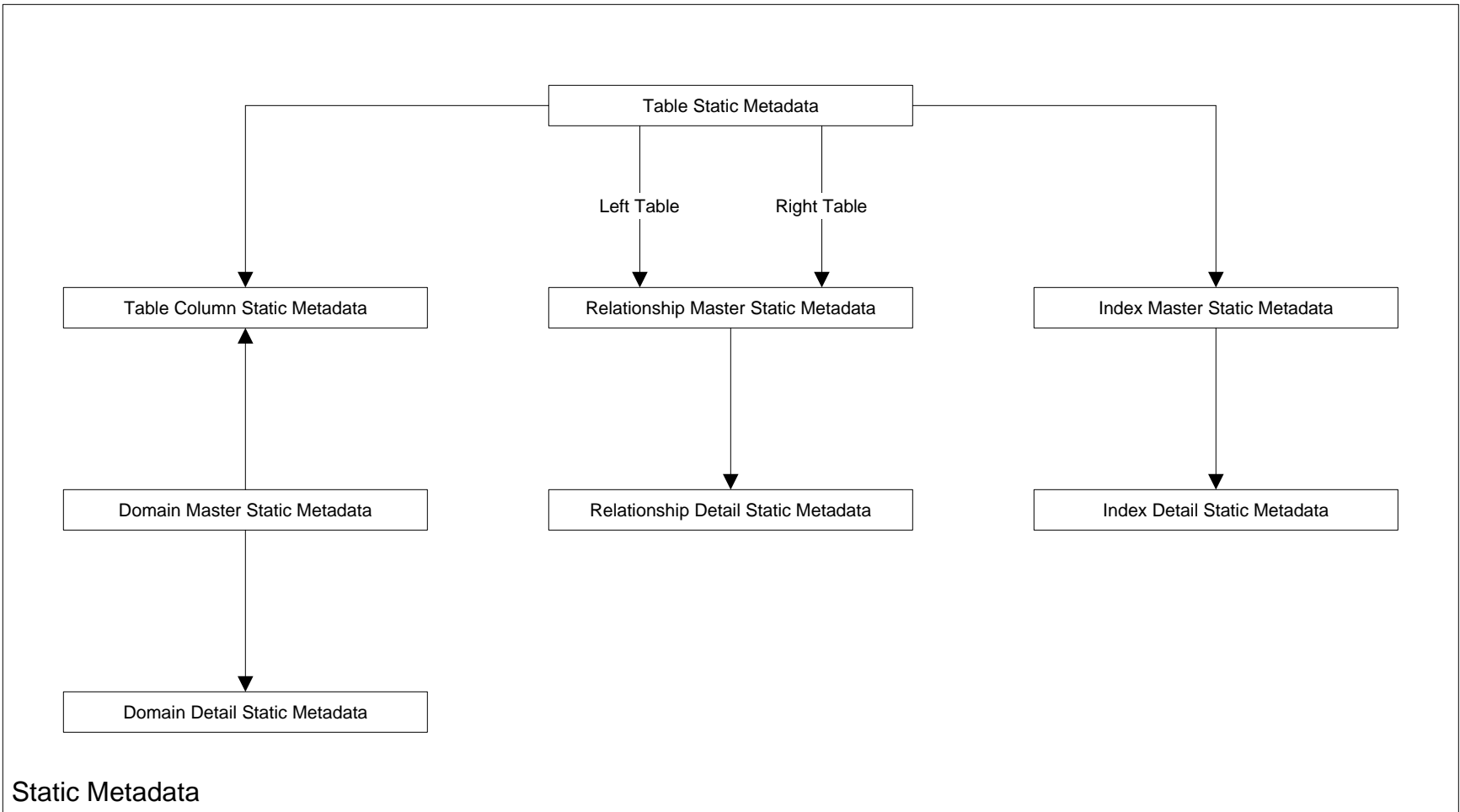


# SSURGO 2.0 Tabular Data Structure

## Metadata Tables



Dynamic metadata documents the contents of a particular SSURGO export. It includes such information as date and time of export, what soil survey areas were included and what soil interpretations were included. Since the dynamic metadata describes the contents of a particular SSURGO export, it does vary from export to export.



Static metadata documents the data structure of the SSURGO standard. It includes such information as what tables, columns, indexes and relationships are defined as well as a variety of attributes of each of these database objects. Attributes include table and column descriptions and detailed domain information. Since the static metadata describes the SSURGO data structure, it does not vary from export to export.