



# Geographic Information Systems Products for the Public

## Point of Contact

Daniel Stoelb

GIS Program Coordinator

[daniel.stoelb@state.or.us](mailto:daniel.stoelb@state.or.us)

503-378-3234

To access all our public facing GIS applications, check out our OEM GIS Hub site:

<https://oregon-oem-geo.hub.arcgis.com>



## Access to RAPTOR \* Public Version

<https://arcg.is/1qr5bS>



## Leadership Briefing

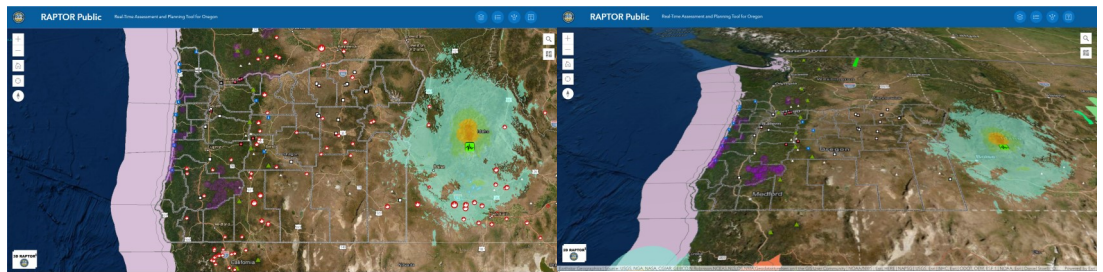
<https://bit.ly/2zNczuF>



## RAPTOR—Real-time Assessment and Planning Tool for Oregon

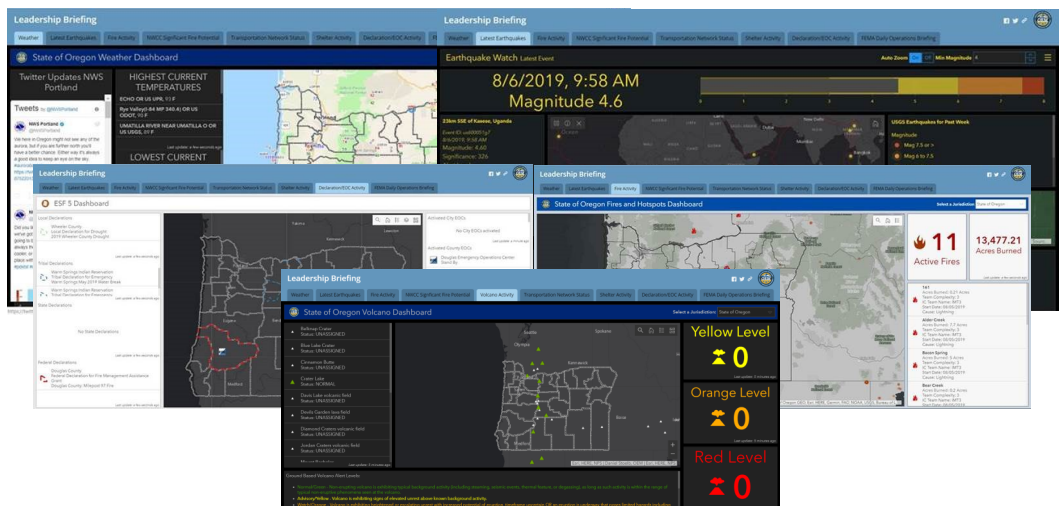
The State of Oregon initiated RAPTOR in 2010 to share information on a common operating picture (COP) as part of the US Department of Homeland Security's Virtual USA Northwest Pilot Project program.

RAPTOR enables users access to live data in combination with 'traditional' GIS layers to create a comprehensive picture anywhere, anytime. RAPTOR is a web mapping application that allows users to display data from various resources onto a single map.



## Leadership Briefing

In August 2019, the Oregon Office of Emergency Management released a new public-facing application focused on data relevant for monitoring events within Oregon. This new application includes details and relevant data for hazards and emergency operations in Oregon, including live twitter feeds from all four weather forecast offices covering Oregon, active weather watches/warnings, air quality, precipitation and flooding forecasts, earthquake statistics, active fire data including acres burned, wildfire potential, volcano status, TripCheck live traffic status, activated shelter statistics, active declarations and emergency operations center status, and the FEMA Daily Operations Briefing.





# Geographic Information Systems Products for the Public

## Point of Contact

Daniel Stoelb

GIS Program Coordinator

[daniel.stoelb@state.or.us](mailto:daniel.stoelb@state.or.us)

503-378-3234

To access all our public facing GIS applications, check out our OEM GIS Hub site:

<https://oregon-oem-geo.hub.arcgis.com>



Access to RAPTOR  
\* Public Version

<https://arcg.is/1qr5bS>



## Leadership Briefing

<https://bit.ly/2zNczuF>



## Story Maps—Documenting Impacts from Events

As information is gathered during events, the Oregon Office of Emergency Management compiles story maps indicating damages as a part of the documentation process. These story maps include relevant information about the setup for the event, the impacts to critical infrastructure, sheltering details, and local impacts. These go hand-in-hand with a disaster declaration request to the Governor's Office and to Region X of FEMA.

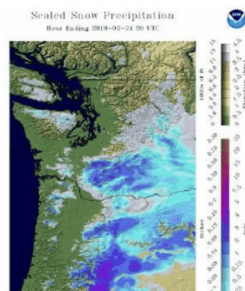
All story maps can be accessed on our OEM GIS Hub Site: <https://oregon-oem-geo.hub.arcgis.com>

## 2019 February Winter Storms Spotlight

### The Storm Setup

During the February 23 to 26, 2019 timeframe, a stationary frontal system lay across the state and generated heavy rain and wet, heavy snow that fell across the region.

siting for w



Starting on February 23, 2019 rain and snow fell along a frontal boundary that stretched from the south - central Oregon coast to the northeastern part of Oregon. The heaviest snow fell east of the Coast Range with 6 to 18 inches of

