

# **2009 Legislative Reporting:**

## **Agency Reporting**

### **Geographic Project Leads (September 17, 2008)**

## **Background**

In 1996 just prior to the upcoming 1997 legislative session the GIS staff at the Department of Environmental Quality were asked by the agency Administrator and management to prepare for each legislator a report on the number of permits in the their respective districts. These reports were used to assist in defining the backlog of permits, and notifying the legislature as to the status of current permits. This assisted in funding packages, awareness of programs to the legislature and prioritization of resources. Additionally, since the reports were prepared by the GIS staff, other data set were also incorporated which included the miles of water quality (303d) limited streams to give background information on each district. These reports were also compiled for the 1999 session.

Each legislative district in Oregon is a unique geography that is comprised of contiguous Census block groups that account for roughly 110,000 people. Crude maps of each district are hosted on the web (at the Secretary of State Offices as PDF and jpg files). Also the Department of Water Resources hosts an interactive map viewer of the districts at:

<http://mckenzie.wrd.state.or.us/apps/sos/redistrict/viewer.htm>

Legislative Districts in Oregon in 2000/2001 accounted for roughly 56.750 people. The responsibilities, deadlines, and criteria for redistricting are contained in Article IV(6) of the Oregon Constitution and ORS 188.010. A GIS data file for the 2001 redistricting is available at the Geospatial Enterprise Office:

[http://www.oregon.gov/DAS/EISPD/GEO/docs/metadata/2000house\\_districts.htm](http://www.oregon.gov/DAS/EISPD/GEO/docs/metadata/2000house_districts.htm)

The 2009 Session is the last session using these boundaries since redistricting will be completed in 2010.

## **Process**

The reports were prepared using the following process:

1. Obtain GIS coverages for the legislative boundaries (60 Representatives and 30 Senators)
2. Build GIS database for program data to cross tabulate (parameters of interest)
3. Overlay program GIS data (Task 2) with for Legislative Boundaries (Task 1).
4. Cross-tabulate results by districts (summary statistics)
5. Generate Reports for the Agency Director, Division Administrators and Legislative Coordinator(s).

In 2001 (until 2007) similar reports have been prepared for all programs in the Oregon Employment Department. An example of these is present in Figure 1. These reports

typical contain the last several years of data, present trends, and baseline information. Response from individual legislators to these reports and from management has historically been very strong.

In the summer of 2008 numerous agencies have had information discussions regarding legislative reporting. This was to develop a proactive and consistent reporting method among the agencies. This has included to-date, the Oregon Employment Department, the Department of Administrative Services, Water Resource Department, Human Services, Land Conservation and Development, Agriculture, and other agencies.

Figure 1 presents a standard GIS report, however, users of this data (and staff internal to the agency that prepared the report [i.e. Employment Department]), have indicated that this is **not** a GIS report. Since this type of data can only be built from GIS databases, overlays of spatial data, it is by definition GIS task. Secondly, the database work has always been completed by GIS staff. If we, the GIS Program Leaders, can stress the importance of GIS to these reports the legislator and their staff (and our agency management) will appreciate the importance of simple GIS analysis to support decision making.

### ***Parameters of Interest***

There are numerous parameters that may be of interest to legislator, agency staff making presentation to committees and other interested parties. This could include tabulating the number of Points of Diversion in a district, the number of Confined Animal Feeding lots a specific area, Measure 37/49 claims across the state and other parameters. Table 1 presents a potential preliminary draft list of important data for statistical summary.

### ***Identifying GIS on Reports***

Since, based on our experience at Employment, not many readers of the reports understand that this is GIS data (or created from GIS processing), we were envisioning some logo or footnote indicating this was GIS generated. The goal of this is for agency staff, legislators and the public to become familiar with GIS and its products (especially non map related products).

### ***Future Enterprise Benefits***

Several other related data summary tasks have been proposed using similar databases. One example is an analysis of distressed communities in Oregon (potentially integrated by incorporated area), Urban Renewal Areas, Enterprise Zones and other applications. Building the data base for multiple potential applications would yield more benefits associated with the GIS analysis and data base management.

## Figures and Tables



### OREGON EMPLOYMENT DEPARTMENT WORKSOURCE OREGON

**Representative**

**Karen Minnis**

District: 49

Oregon Employment Department  
Services Summaries

#### Annual Covered Employment

Year	Covered Employers <sup>1</sup>	Average Annual Employment	Taxable Wages
1999	1,108	22,804	\$378,150,673
2000	1,140	23,105	\$387,873,238
2001	1,265	23,975	\$418,706,100

#### 2001 Covered Employment <sup>2</sup> Breakout

Sector	Number of Covered Employers	Average Annual Employment	Taxable Wages
Agriculture, Forestry & Fishing	25	981	\$18,169,561
Finance, Insurance & Real Estate	124	1,605	\$28,910,832
Manufacturing	85	6,779	\$168,754,663
Mining & Construction	177	819	\$20,319,474
Services	433	4,604	\$61,129,561
Trade	356	5,520	\$98,939,662
Transportation & Communication	49	919	\$22,167,076
Public and Misc.	16	2,748	\$315,271

#### Unemployment Insurance <sup>3</sup>

Year	UI Tax Paid	Benefits Paid	Number of Claimants <sup>4</sup>
2000	\$7,019,655	\$6,506,867	2,499
2001	\$6,784,447	\$11,673,370	3,543

#### Employment Services

Calendar Year	Number of Job Orders	Number of Applicants	Number of Hires <sup>5</sup>	Applicants Receiving Qualifying Services	Qualifying <sup>6</sup> Services Provided	Obtained <sup>6</sup> Employment
2000	916	7,145	601	4,936	20,492	4,033
2001	901	8,905	611	6,302	26,369	4,889
2002 ytd	924	10,920	514	6,261	23,040	3,807

1 & 2 – Covered Employers are those that are required by statute to pay into the Unemployment Insurance System. Figures in these tables are estimates derived from the geocoding of Covered Employment and Wage Survey data.

3 – Unemployment Insurance (UI) figures are estimates derived from the geocoding of UI data.

4. Figure is ONLY those applicants who actually received UI benefits. Those who filed but did not claim, claimed only a waiting week, or were denied benefits, are not included in this number.

5 – Hires or "Placements" are those applicants that were hired by an employer, after being referred by the Employment Department to that employer, in response to a request for applicants from the employer.

6 – Obtained Employment: Credit taken by Employment Department when an individual goes to work without a direct referral but within 90 days of receiving a qualifying service from the Employment Department. In most instances, this count is automated. Qualifying services are: Assisting with Job Search Activities; placement in a State or Federal Training program; provision of Vocational Guidance; provision of Enhanced Enrollment services; participation in a Job Search Workshop; placing a Veteran in a federally supported job training program

**Figure 1. Page 1 of the 2001 Employment Legislative Report**

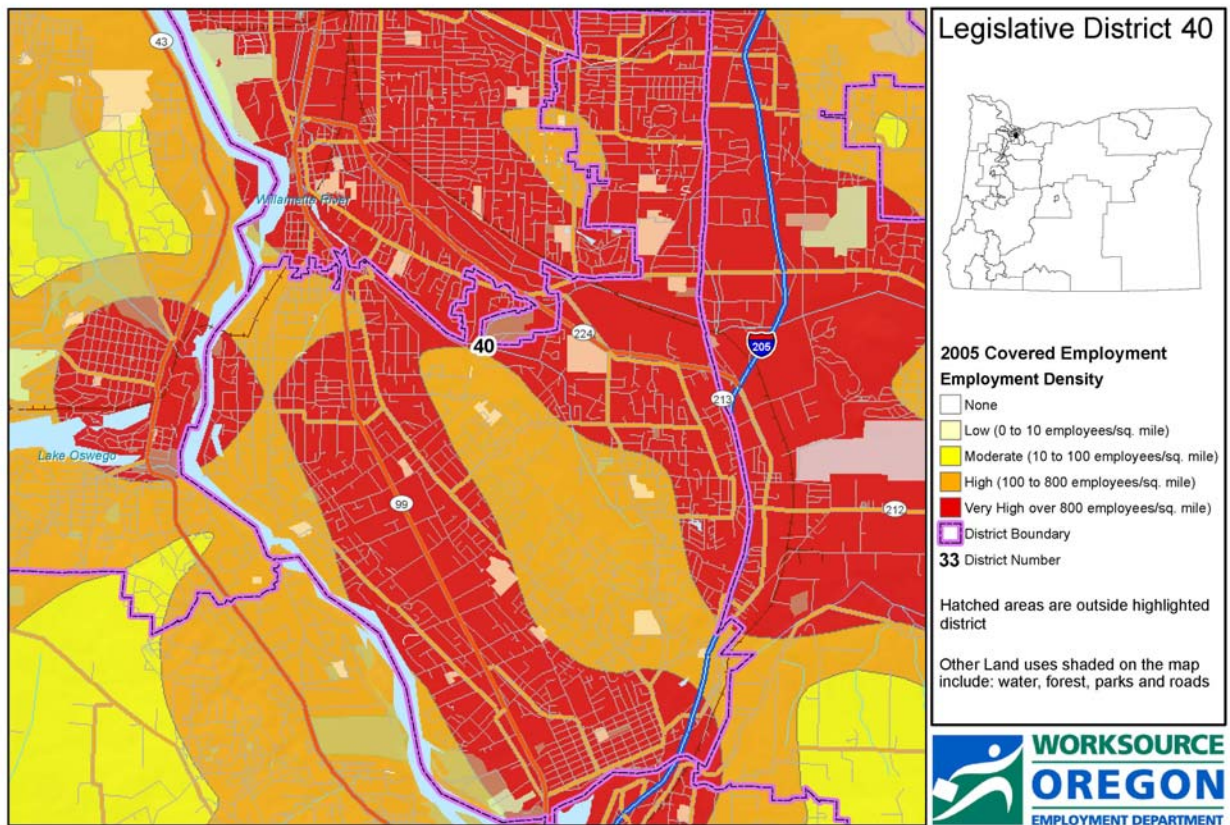


Figure 2. Legislative Map of Employment Data (prepared for each District)

**Table 1. Potential Legislative Statistics (made up by Joe [wild guesses...apologies included])**

Agency	Primary Data	Location	Time Series	Parameter	Count	Sum/Total	Monetary
Employment	UI Benefits Paid	Place of Residence	Yes	Claims	Yes	Yes	Yes
	UI Taxes Paid	Place of Work	Yes	Taxes	Yes	Yes	Yes
	Job Orders	Place of Work	Yes	Type/Filled/Occupations			
	Job Applicants	Place of Residence	Yes	Hires	Yes	Yes	No
				Obtained Employment	Yes	Yes	No
				Qualifying Services	Yes	Yes	No
	Facility	Place of Service	Yes	Type	Yes	No	No
	Capacity	Place of Service	Yes	Children	Yes	No	No
Water Resources							
	Employers	Place of Work	Yes	Firms	Yes	Yes	No
				Wages/Payroll	Yes	Yes	Yes
				Types/NAICS	Yes	Yes	Yes
Environmental Quality	Water Rights		Yes	Point of Application	Yes	Yes	No
			Yes	Points of Diversion	Yes	Yes	No
			Yes	Application Area	Yes	Yes	No
	Wells			Number	Yes	Yes	No
Land Conservation & Development	Permits		Yes	Types	Yes	Yes	No
	WQ Limited 303(d)		Yes	Constituent/Miles	Yes	Yes	No
	Drinking Water Sources			Type	Yes	Yes	No
Consumer Business Services	Measure 49 Claims		Yes	Number/Type	Yes	Yes	Yes
	OSHAA Claims		Yes	Number/Type	Yes	Yes	Unknown
	Workers Compensation		Yes	Number/Type	Yes	Yes	Unknown
	Building Codes		Yes	Number/Type	Yes	Yes	No
Secretary of State	Permitting		Yes	Number/Type	Yes	Yes	No
Agriculture	Corporations	Place of Incorp.	Yes	Numbers	Yes	No	No
Educations	Pesticides		Yes	Status	Yes	Yes	No
	CAFOs		Yes	Types	Yes	Yes	No
Forestry	Schools	Location	Yes	Students	Yes	Yes	No
	Districts	Area	Yes	Performance	Yes	Yes	Yes
				Dropouts	Yes	Yes	No
Transportation	Wildfire Community-Risk		No	Risk Parameters			
Parks & Recreation	Urban/Rural		No - Variable	City Limits/UGB/etc	Yes	No	No
Geology							
	Permits		Yes	MMLR Program/Type	Yes	No	No
	Critical Facilities		No	Planning	Yes	No	No
	Disasters		No	Planning	Yes	No	No
Emergency Management							
	E911		No	Calls	Yes	No	No
	Disasters		No	Types	Yes	No	No
	Emergency Op. Centers		No	Locations	Yes	No	No
Fish & Wildlife							
	Critical Habitat		No	Fisheries	Yes	Miles/Streams	No
State Lands							
	Wetlands		Partial	401/404	Yes	No	No
	Lands		No	Area	Yes	Yes (acres)	No