


HOME

GALLERY

MAP

GROUPS

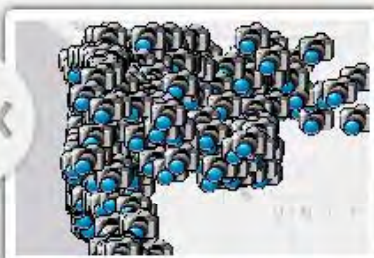
MY CONTENT

Find maps, applications and more... 



State of Oregon Geospatial Enterprise Office

Oregon GIS Community Maps, Services, and Applications



PNW Traffic Cameras



Traffic Cameras: OR, WA, ID, CA, MT



Oregon 100-Yr Floodplain (Preliminary)



Oregon Rapid Wetland Assessment Protocol

The Geospatial Enterprise Office (GEO) coordinates with government agencies to develop and manage geographic information. It communicates about Geographic Information Systems (GIS) issues with users. It guides development of Oregon's GIS data standards. Working together, state, federal, and local governments are improving the geographic information they share. GEO is also the State's point of contact for other organizations about geographic information and GIS. GEO also hosts the Oregon Geospatial Data Clearinghouse, an electronic library of geographic information.

Make a Map »

Create a map that can be viewed in a browser, desktop or mobile device. Share it on a blog, via email, or embed it in a website.

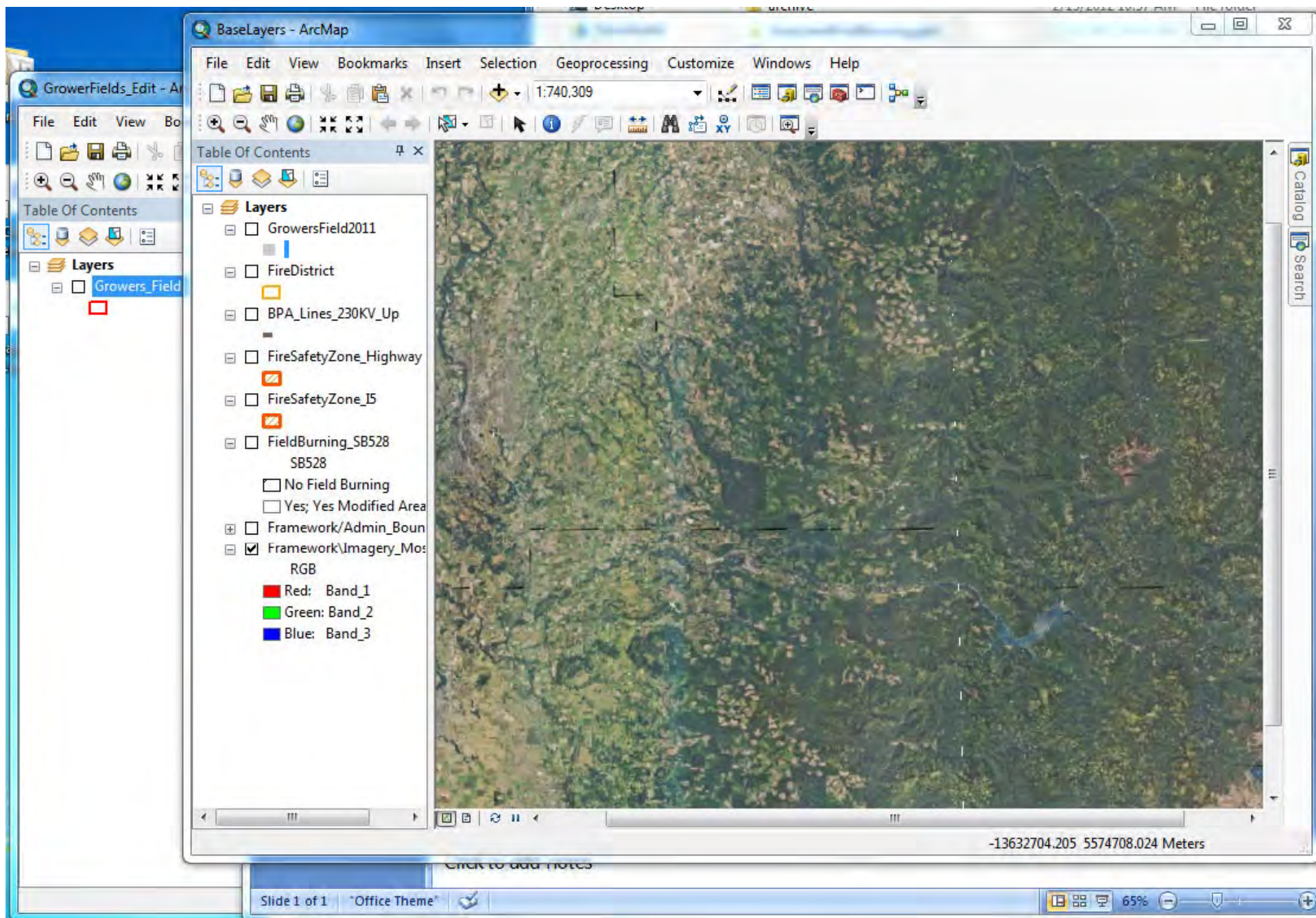
Start ArcGIS Explorer Online »

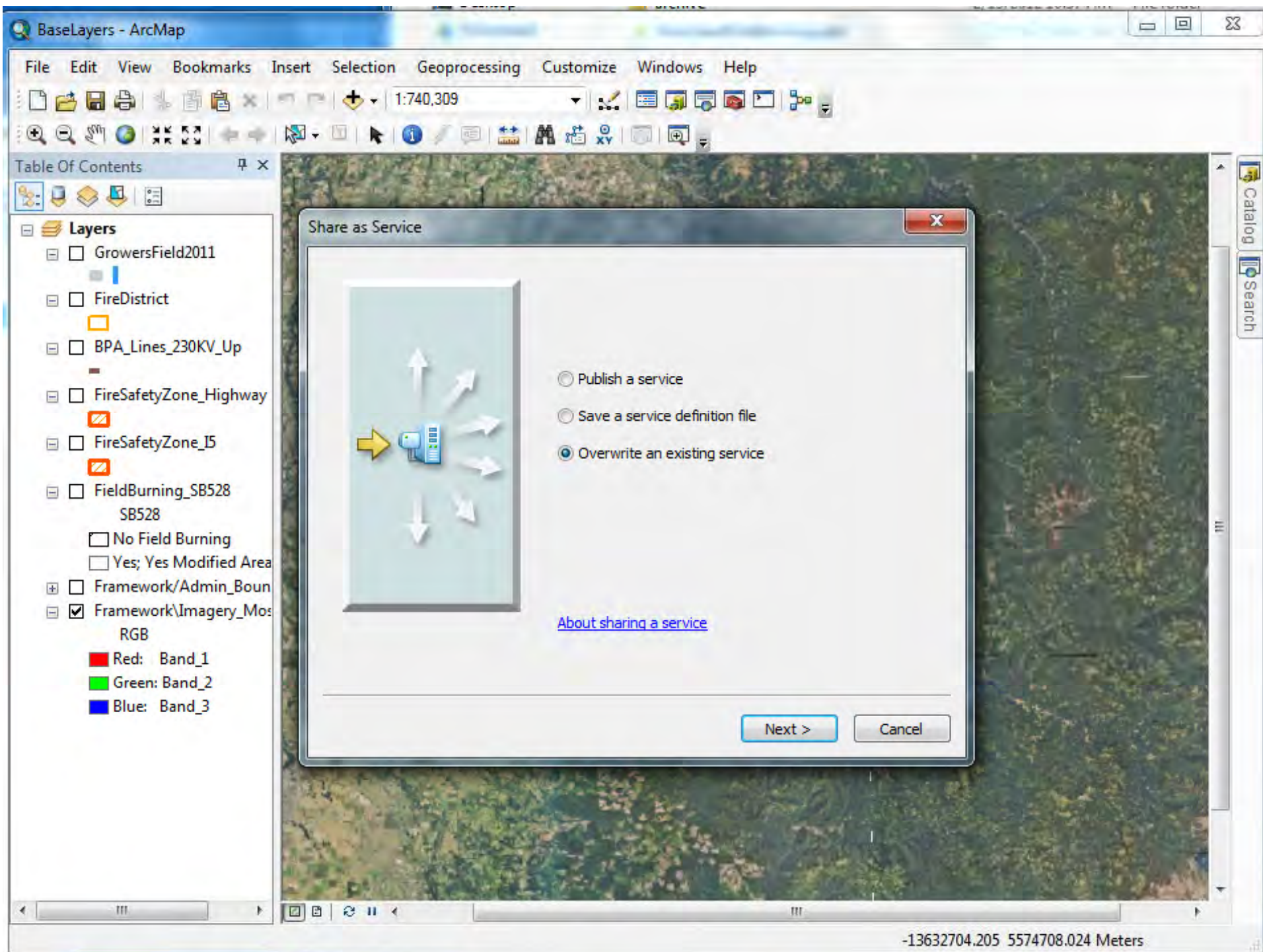
Use this rich application for transforming your data into beautiful maps and presentations that tell powerful stories.

<http://geo.maps.arcgis.com/>

	GEO-Services / OR Spatial Data Library	ArcGIS Online for Organizations (AGO-Orgs)	data.oregon.gov (d.o.g.)
Description	Geo-Services hosted at SDC in a robust, high-availability server architecture (though, by design not as scalable as services hosted @ large server farms). Provide services for state-services, require publishing by one of two server admins (i.e., Dave or Erik). Does not include a platform for developing web maps; rather services are registered on AGO and OR SDL (and potentially D.O.G. down the road), which provide mechanism for viewing with web/desktop clients. Used as a basis for many State web mapping applications.	Primarily geared towards Esri users, though neither desktop client or local ArcGIS Server instance is required. Since it is offered by Esri, it's largely geared towards Esri customers. Increasingly tight coupling with ArcGIS Desktop. AGO-Orgs includes ability to publish web services using SAAS model (ArcGIS Server hosted as a service). Data/Services hosted on Esri and/or Amazon servers.	Platform mainly aimed at exposing government data (especially tabular) as a service, enabling various elements of social media. Data hosted at a Socrata server farm. Spatial features primarily include placing points on map, some filter and advanced visualization (e.g., clustering, custom symbology, etc.) capabilities.
Loading Data	Via ArcGIS Desktop, source data include Shapefile, File GDB, Personal GDB, SDE, SQL Server Tables (perhaps more?)	Currently only through web-interface. Source data: Shapefile, KML, CSV, TXT, GPX... full list here . Coming in v.10.1 (or beta 10.1 available now), data can be published using ArcGIS Desktop	Through web interface or custom API. Source data: XLS, CSV, Soon: KML, SHP...
GIS Platform	ArcGIS Server	ArcGIS Server	GeoServer (plan is to enable consuming ArcGIS Services)
Provides Access to Embeddable Maps?	Only if services registered with	Yes	Yes
Web-Clients?	Via AGO, ArcGIS Explorer Online, custom web applications, Google Maps (using KML service)	AGO includes a simple web map client , ArcGIS Explorer, Google	D.O.G. has it's own simple web map client, also possible to use custom
Desktop Clients?	ArcGIS Desktop, other desktop clients that support ArcGIS REST, WMS, WFS, WCS, KML services	ArcGIS Desktop, other desktop clients that support ArcGIS REST or WFS services	No
REST Endpoint:	link	link	Info here (note: provides a RESTful API, however not in the same format as ArcGIS Server REST services)., JSON as primary data exchange.

Publishing Services





Service Editor

Connection: My Hosted Services Service Name: ODA_FieldBurning_base

Analyze Preview Publish

Parameters

Capabilities

- Tiled Mapping
- Feature Access

Caching

- Tiling Scheme
- Initial Cache

Item Description

Sharing

Parameters

Map

Map Document: S:\project_data\AGO-Orgs_ODA\BaseLayers.mxd

Anti-Aliasing

Anti-Aliasing: Best

Text Anti-Aliasing: Force

Properties

Maximum number of records returned by the server: 1000

Advanced...

Service Editor

Connection: My Hosted Services Service Name: ODA_FieldBurning_base

Analyze Preview Publish

Parameters

Capabilities

Tiled Mapping

Feature Access

Caching

Tiling Scheme

Initial Cache

Item Description

Sharing

Capabilities

Choose the capabilities you would like enabled for this service:

☒ Tiled Mapping

☒ Feature Access

Service Editor

Connection: My Hosted Services Service Name: ODA_FieldBurning_base

Analyze Preview Publish

Parameters

Capabilities

Tiled Mapping

Feature Access

Caching

Tiling Scheme

Initial Cache

Item Description

Sharing

Tiled Mapping

REST URL:

SOAP URL:

Operations allowed:

☒ Map

Properties

<There are no properties for this capability>

Service Editor

Connection: My Hosted Services Service Name: ODA_FieldBurning_base

Analyze Preview Publish

Parameters

Capabilities

Tiled Mapping

Feature Access

Caching

Tiling Scheme

Initial Cache

Item Description

Sharing

Feature Access

REST URL:

SOAP URL:

Operations allowed:

☐ Create ☐ Delete ☒ Query ☐ Update

Properties

Service Editor

Connection: My Hosted Services Service Name: ODA_FieldBurning_base

Analyze Preview Publish

Parameters

Capabilities

Tiled Mapping

Feature Access

Caching

Tiling Scheme

Initial Cache

Item Description

Sharing

Caching

Draw this map service: ☐ Dynamically from the data
☒ Using tiles from a cache

Cache Settings

Tiling Scheme: Custom

Tile Format: PNG8

Compression:

Storage Format: Exploded

Service Editor

Connection: My Hosted Services Service Name: ODA_FieldBurning_base

✓ Analyze

➕ Preview

📄 Publish



Parameters

Capabilities

 Tiled Mapping

 Feature Access

Caching

 Tiling Scheme

 Initial Cache

Item Description

Sharing

Item Description

Summary (required):

Base layers for ODA Grass Seed Burning Map.

Tags (required):

Grass, Seed, Field, Fields, Burning, Burn, Fire, ODA, Agriculture, Base layers

Choose Your Tags...

Description:

Base layers for ODA Grass Seed Burning Map.

Access and Use Constraints:

none

Credits:

ODA, GEO

Service Editor

Connection: My Hosted Services Service Name: ODA_FieldBurning_base

Analyze Preview Publish

Parameters

Capabilities

Tiled Mapping

Feature Access

Caching

Tiling Scheme

Initial Cache

Item Description

Sharing

Sharing

Share your service with:

☒ State of Oregon Geospatial Enterprise Office

☐ Everyone (public)

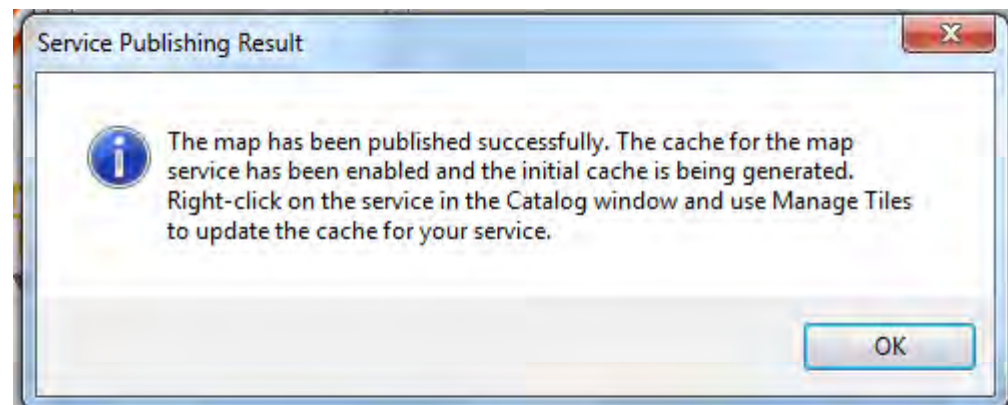
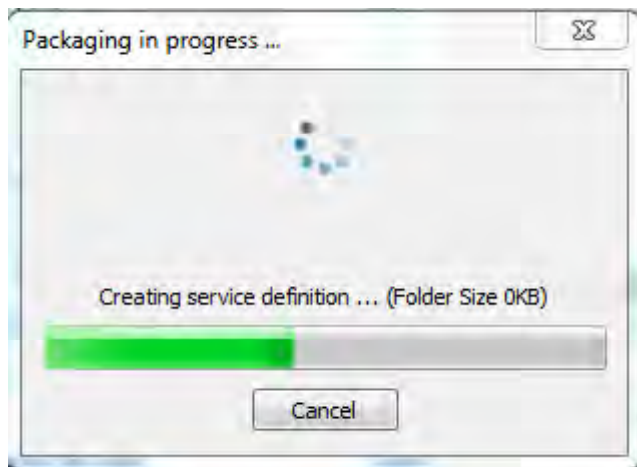
☐ Members of these groups:

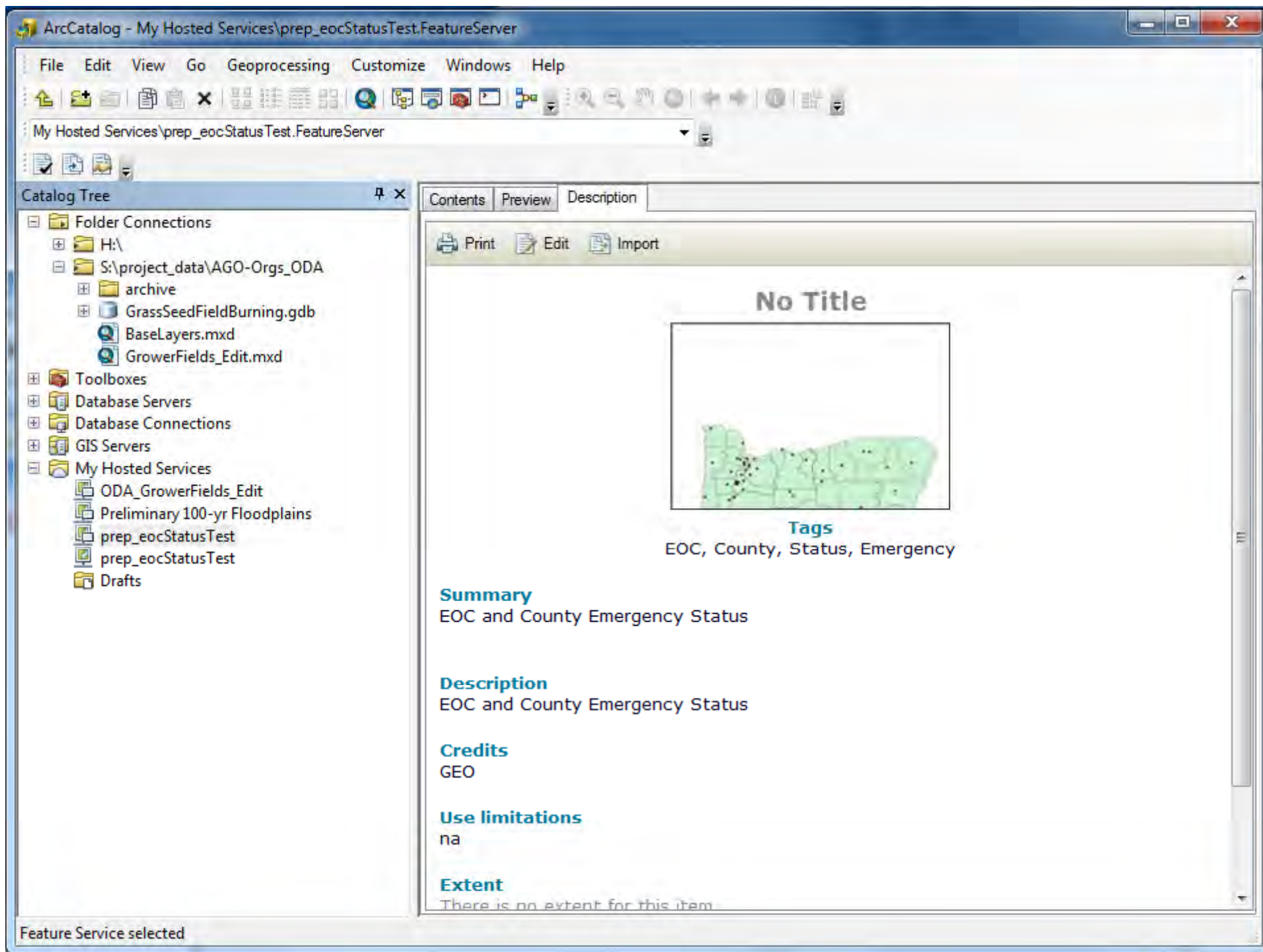
☐ Facilities

☐ Maps In The Cloud

☐ OR GIS Program Leaders

☐ Oregon Common Operating Picture





Database Properties

General

Domains

Domain Name	Description
Burn	Type of burn to be used on the field
CNBA	Critical Non-burn Area
Crop	Crop Variety of field
CropVariety	Type of grass being burned
FireDistrict	Valid Fire Districts
Type	Type of Field ST or IS

Domain Properties:

Field Type	Text
Domain Type	Coded Values
Split policy	Duplicate
Merge policy	Default Value

Coded Values:

Code	Description
Regular	Regular
Propane	Propane Flaming

OK

Cancel

Apply

What I think ArcGIS.com has going for it:

- integration with ArcGIS Desktop
- Ditto with online and 'lightweight' clients: ArcGIS.com and ArcGIS Explorer Online
- the web clients make it easy for users to create and save custom maps, embed interactive maps in websites, and create web map applications (from simple out of the box to custom-coded)
- ease of entry for publishing data and web services (no dedicated arcgis server license required)
- enables quick setup of editable web services, can later pull user-contributed data back to local system

Some problems/limitations with ArcGIS.com:

- creates data silos; once data is uploaded it's automatically disconnected from the source
- doesn't support the FGDC metadata standard (current standard for Oregon), rather it uses ISO standards which are much simpler (and arguably incomplete in a lot of areas)
- Only supports ArcGIS REST and Web Feature Services; no support for other very common standards like KML, WMS.

Some resources:

ArcGIS Online Blog:

<http://blogs.esri.com/Support/blogs/arcgisonline>

ArcGIS Online Resource Center:

<http://help.arcgis.com/en/arcgisonline/content>

ArcGIS Online for Organizations:

<http://www.esri.com/software/arcgis/arcgisonline/features/organizations.html>

Two articles critiquing ArcGIS.com :

<http://spatiallyadjusted.com/2012/01/06/lets-call-esris-arcgis-online-what-it-is-a-spade/>

<http://georamblings.com/2011/12/arcgis-com-or-was-that-arcgis-online-either-or-its-not-fully-baked/>

Want to participate in the ArcGIS Online for Organizations Beta?

- Send me (erik.endrulat@state.or.us) an email requesting access.
- I'll add you as a user, you should receive an email from AGO with instructions on how to move forward.
- You'll be able to choose to associate your existing AGO account with the State of Oregon program, or create a new AGO account. (note, if the former, all of your content on AGO will be accessible by the AGO admin [i.e., me])