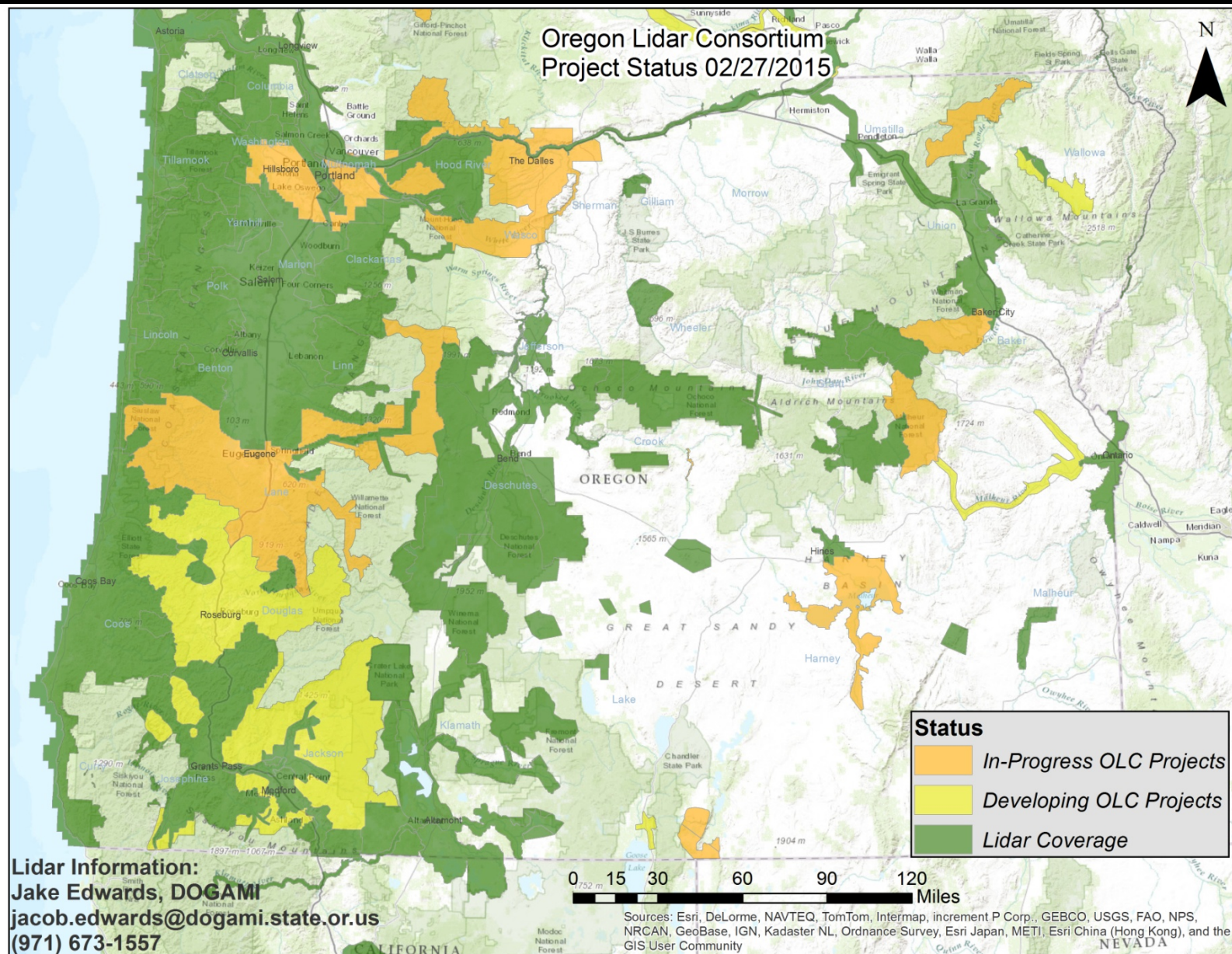
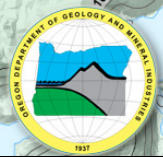


Oregon Department of Geology & Mineral Industries





Oregon Lidar Consortium -- Activity in Oregon

- **Lane County AOI**
 - New coverage, filling in gaps
 - Mostly acquired and in post-processing
 - Summer release to partners
- **Metro AOI**
 - Reflight of 2005 and 2007 areas
 - Co-acquired with 3" orthoimagery
 - Acquired and in post-processing
 - Summer release to partners
- **Wasco AOI**
 - New coverage
 - Acquired and in post-processing
 - Summer release to partners
- **Harney Basin AOI**
 - New coverage
 - Acquired and in post-processing
 - 6" orthoimagery collection in July
 - Spring release to partners
- **Umatilla AOI**
 - New coverage
 - Finalizing
 - Spring release to partners
- **BLM Sage Grouse AOI**
 - New coverage east of Lakeview
 - 6" orthoimagery
 - Finalizing
 - Spring release to partners
- **Four Rivers AOI**
 - New coverage southwest of Baker City
 - 60% acquired
 - Orthoimagery acquired
 - Summer release to partners
- **Ordered gap-filling coverage in Umpqua Valley**
- **Developing gap-filling coverage in Rogue Valley**
- **Developing new coverage in Wallowas, Vale, Hart Mountain, Crooked River**