

State of Oregon

GIS PROGRAM LEADERS (GPL) COMMITTEE

September 10, 2019 Meeting Minutes

Meeting Host: Dept. of Fish and Wildlife

Scribe: Joe Severson, Marine Board

Attendees (*via phone): Rachel Smith - Chair, Diana Walker, Emmor Nile, Brady Callahan, Phil Smith, Joe Severson, Theresa Burcsu, Cy Smith, Tom Elder, Laer Haider, Jon Bowers, Thom York, Melanie Wadsworth, Arron Heriford, Rudie Watzig*, Randy Dana*, Randy Sounhein*, Terri Morganson*,

Announcements:

- [Symposium By the Sea](#) – Lidar Symposium, Charleston, OR, Sept. 27, 2019
- [NACIS Annual Mtg](#), Tacoma, WA, Oct. 16-19, 2019
- [NW GIS User Group Conf.](#), Bend, OR, Nov. 4-7, 2019
- [GIS Day](#), Nov. 13, 2019
- State of Oregon GIS Day Activities – November 20, 2019 @ Capitol

GEO / OGIC Report, Cy Smith:

OGIC Report

Cy reports that a data sharing funding request was being considered for the upcoming short session. But ultimately, the Office of the State CIO decided against that strategy, so the focus will be on the 2021 session.

Resource Workgroup – was stood up last year to support the 2019 legislative request. The Workgroup has been reactivated to work on recommendations for the 2021 session request.

Cy read a letter/email from the OGIC chair, Jeff Frkonja regarding next steps. The Resources Workgroup will consist of two teams: an engagement team – led by Jeff, and a recommendation team –led by Rachel Smith. The Engagement team will work on stakeholder engagement/buy-in and outreach. The Recommendation team will work on the implementation strategy that will lead to a funding request for the 2021 session. All of this work will be presented to OGIC for review and approval.

The OGIC objectives and key results strategy is focused on the OGIC vision/strategic plan, in general. The use of objectives and key results was reviewed at the last OGIC meeting and the August GPL meeting.

GEO Report

The GEO staff have recently moved to the State Data Center as an interim office location, until their more permanent location at the Dept. of Revenue is ready. A second move to the DOR building will come soon.

ArcGIS Pro Training – Dave Mather has been organizing this training with esri. The DHS training facility on Cherry St. in Salem is being reserved for the class. Dates have not been selected yet. More to come on this item in the near future....

GPL Structure / OGIC TAC Discussion

At the July OGIC meeting, the GPL charter was presented for review and approval. This led to a discussion about who should serve as the technical advisory group (TAC) to OGIC. Cy and Rachel came up with three alternatives to present to GPL for discussion.

Alternative A: GPL is state agency membership only, but serves as OGIC Technical Advisory Committee (TAC)

- OGIC would make specific requests for technical advice
- GPL would reach out to SME's in other organizations when that happened
- Subcommittees or work groups could be formed to work on OGIC issues, as needed

Alternative B: GPL is multi-organizational membership, reflecting OGIC stakeholders

- GPL would serve as OGIC's TAC
- OGIC members would each appoint one TAC member, as they do for their Policy Advisory Committee
- GPL could have a state agency subcommittee that meets monthly, comprised of membership beyond TAC
- GPL as a whole would meet quarterly one month in advance of OGIC

Alternative C: GPL remains as is

- OGIC forms its own TAC, reflecting its membership; each OGIC member appoints one TAC member
- OGIC TAC would coordinate/communicate with GPL as appropriate on specific issues
- OGIC would likely seek overlap between TAC and GPL membership to some extent
- OGIC TAC would meet quarterly

The group discussion revolved around 1) the TAC representing OGIC membership, 2) GPL purpose/history and lack of non-state agency participation, and 3) meeting logistics, agendas, chair duties.

Regardless of the option picked there will likely be overlap between TAC and GPL participants. State agencies want/need a way to communicate with OGIC.

The group did not select any of the alternatives presented and designed their own recommendation.

Resulting Decision

OGIC will appoint members to a TAC; they can choose more than 1 to participate (doesn't need to be a 1:1); the state agency reps will likely appoint GPL members to represent state agencies; the TAC will meet quarterly.

OGIC members should appoint participants who represent the group they represent. Cy will provide the list of GPL (state agency) reps organized by policy area. This will likely make it easier for OGIC state

agency reps to appoint GPL reps for the TAC. Also OGIC appointments of non-state representatives may garner better participation at the TAC meetings.

The TAC will meet quarterly. GPL will continue to meet monthly, but when the TAC meets, GPL will join TAC and participate together. TAC will need to appoint their own Chair to create their agendas and minutes (not the GPL chair).

The GPL decision/recommendation will be presented to OGIC at the October meeting. If approved, the goal would be to have appointments made by January with the first TAC meeting in March to prep for the April OGIC meeting.

Framework Report, Theresa Burcsu:

Proposal amendments are due Thursday; these were initially denied. Anticipating 3 out of 4 proposals. They will be reviewed by the Review Team and the final recommendation sent to OGIC at next OGIC meeting.

FIT leads meeting in a month. They will review their charter; specifically comments made during the OGIC review of the FIT charter.

Framework Forum is not scheduled yet. Targeting the 1st week in December. Meeting in Portland.

Past FIT projects are wrapping up; comprehensive plan layer, fish distribution wrapped up, geoscience schema. Bathymetry not done yet.

GIS Day Discussion, All:

City of Salem has November 20th reserved at the Capitol, but doesn't plan to use it (unless possibly GPL does) – Joe will investigate further to see if the City wants to join us.

Daniel Stoelb at OEM would like to have a kiosk for the GIS day activities.

Cy mentioned that wildfire and climate change are good use cases for legislative days. We would want to focus on one or two key use cases to better tell the message. Rachel mentioned the topics discussed last month at GPL: address points, school data, tax lots - examples of data sharing struggles and opportunities.

ORMAP updating its web interface and it should be ready in October. DOR would like to showcase this at the event.

Randy S. recommended a storymap idea: How GIS has evolved in the State.

Cy will follow up on December legislative days and look into reserving the capitol. We could do the event for two days – 1 day in November, 1 in December.

Update: The legislative days are scheduled for November 18-22. (none in December) So November 20th will work for the GIS showcase during legislative days.

Rachel polled group for interest in GIS day. Several in room expressed interest. GEO could participate in GIS Day by explaining data themes. Cy will reach out to Salem-Keizer school district GIS to advertise the event for potential school kids visit.

Terri suggests registering event with ESRI.

ArcGIS Pro Named Users/Concurrent License Presentation, Tom Elder:

Tom Elder provided a presentation on converting ArcGIS Pro from named users to concurrent licenses.

****The presentation slides are provided at the end of these meeting minutes.**

Roundtable:

Dept. of State Lands - Randy S – Business as Usual (BAU). Upgrading 10.6 to 10.7.

Dept. of Forestry – Emmor N. – under extreme budget restrictions. This has hindered operations. Making county mosaics of 1ft orthos to distribute to district offices. They have a mirror of the gis library at each district office. Collaborating with OWEB on stream work.

Oregon Parks and Recreation Dept. – Brady C – recruiting for ISS4 position. 70 candidates applied. OPRD has 1800's – 1930's GLO maps – upgrading image services to include all years scanned. (General Land Office maps.) These will be made available to the public. Thinking about upgrading to Enterprise. Currently has 10.2. Using Survey 1,2,3 apps.

Dept. of Transportation – Phil S. - migrating from 10.6 to Enterprise 10.7. Talking about migration strategies. About 1/3 way through strategic plan (5 year plan). Using Timmons Group for strategic planning.

Dept. of Fish and Wildlife - Jon B – HB2841 from recent leg session – sensitive poaching data that was not exempt to public records request. So the bill makes it where ODFW can more easily protect sensitive data. Illegal harvesting is a big issue at ODFW. ~ 50% of game harvests are illegal. So they are trying to finalize their guidance so that they know which datasets are level 1 and level 2, etc... Classifying datasets so that they know which data are available, which ones are available via data sharing agreements, etc... They also have a small pilot of ArcGIS Online headless accounts to help with their GIS operations. These types of accounts are ideal for certain scenarios.

Marine Board - Joe S – presenting at OPRD conference in October. Janine at INR and Brady are also presenting.

Dept. of Revenue – Thom Y – recruiting for an ISS 5. DOR is moving to Windows 10, but testing their custom tools. ArcGIS Pro hardware needs. Thom came up with a different set of specs for GIS users so that IT can buy better machines as part of lifecycle replacement of computers.

Working with counties in using ArcGIS Pro and ORMAP work.

ORMAP.net has a new interface. Waiting to go live via ETS. Should be live in October. ORMAP taxing districts workgroup – tech group to work on cadastral data exchange standard. This workgroup is starting up. This is stemming from the LCOG Framework project last biennium.

Fire Marshal/OR State Police – Melanie W – Regional Hazmat Response layer updates.

Dept. of Agriculture – Diana W – BAU

Dept. of Human Services - Tom E – planning to upgrade servers – SQL and Windows; adding encryption to SQL server database.

Dept. of Land Conservation & Development - Rachel S – DLCD work plan drafted for this biennium. Phase 1 taken to executive meeting for review, next meeting to prioritize projects. Kicking off a new project with the OR Dept. of Energy; will look at renewable energy siting and doing site assessments in coordination with the military. Grant from Dept. of Defense.

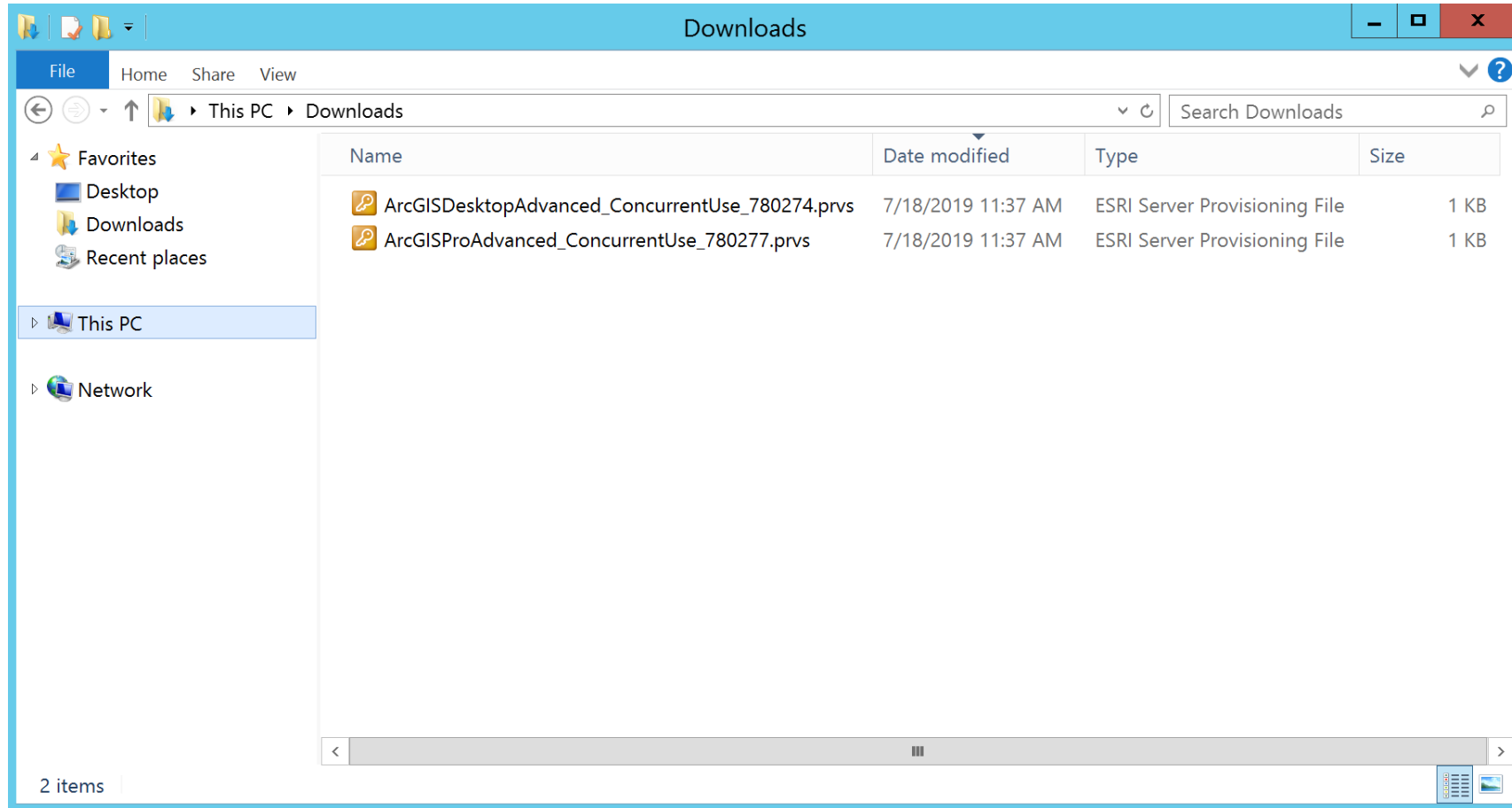
ArcGIS Pro Concurrent Licensing

5 Easyish Steps

But First, Go to the Source -

<https://pro.arcgis.com/en/pro-app/get-started/concurrent-use-licenses.htm>

Step 1 – Obtain Authorization Files



Step 2 – Install License Manager



[Download Components](#) [System Requirements](#)

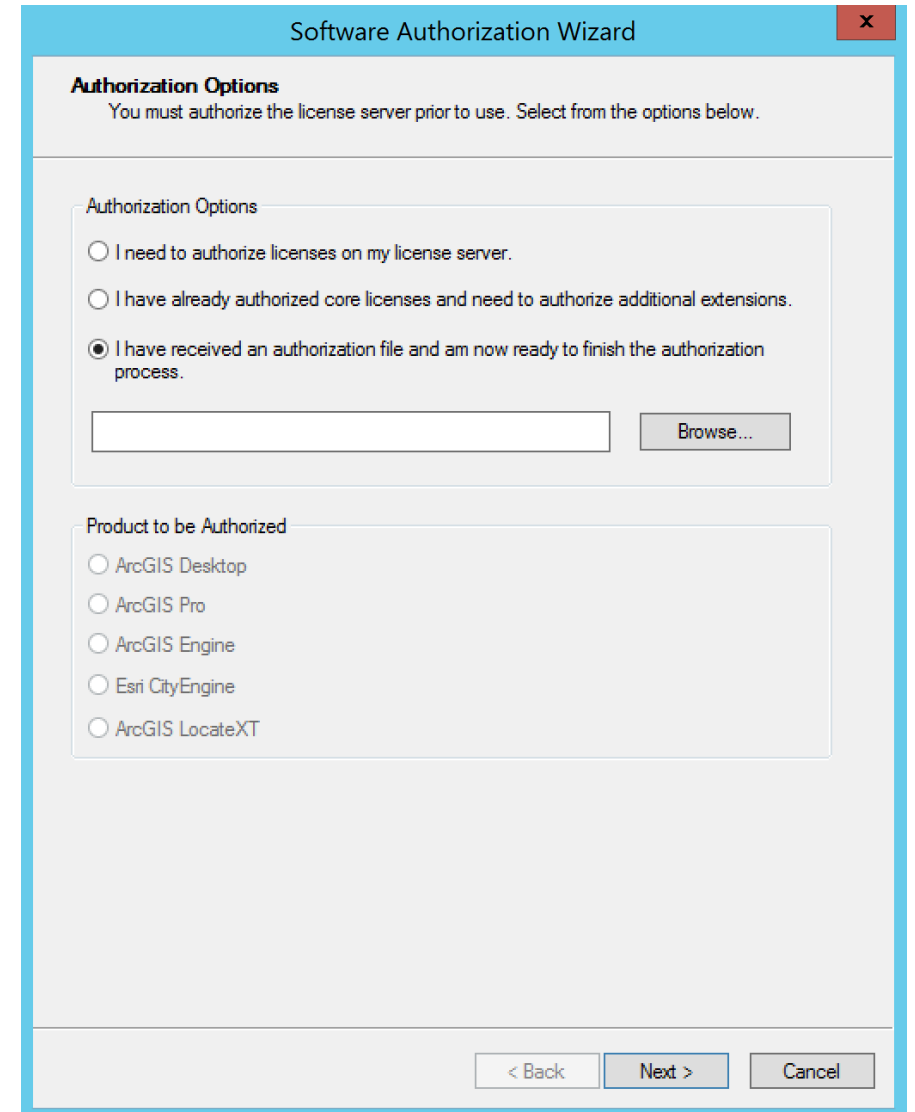
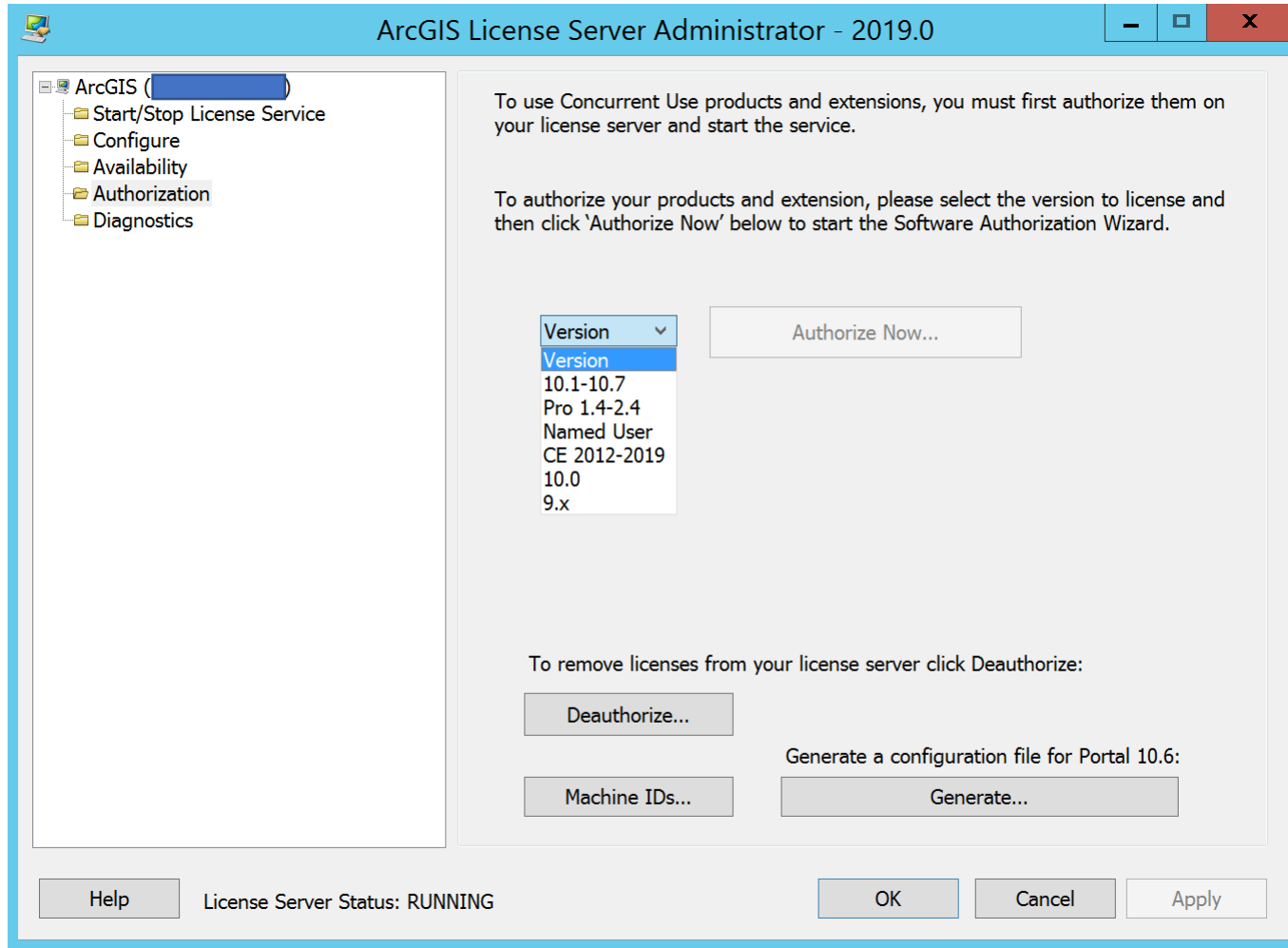
[Expand/Collapse All](#)

▼ Product Components

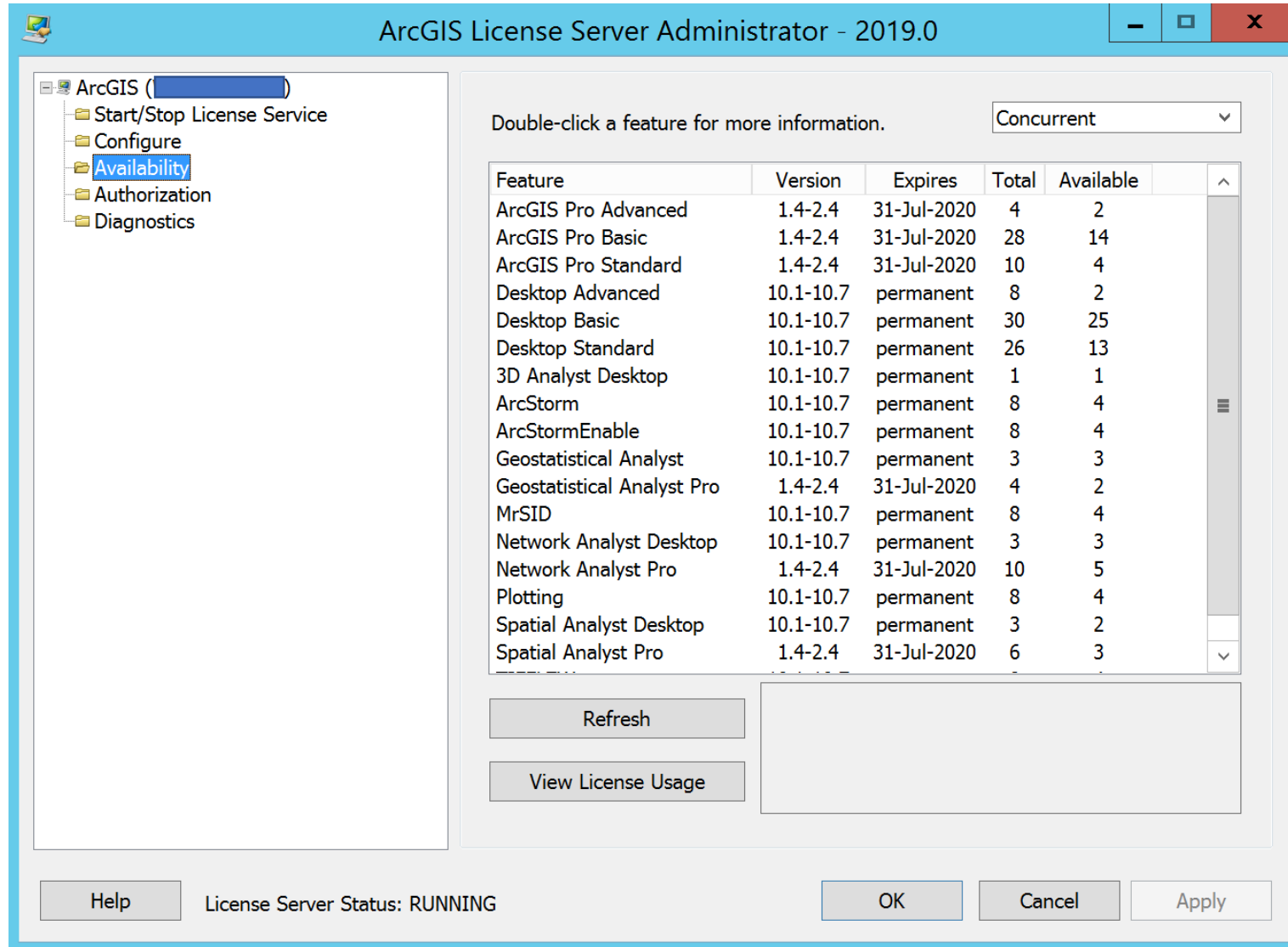
Select the items below that you want to download.

Files		File Size	Action
ArcGIS Desktop ArcGIS Desktop	Additional Information	1,010.27 MB	Download
ArcGIS Desktop Background Geoprocessing (64-bit) ArcGIS Desktop	Additional Information	365.63 MB	Download
Database Server (Desktop) ArcGIS Desktop	Additional Information	355.22 MB	Download
ArcGIS License Manager 2019.0 (Windows) ArcGIS Desktop	Additional Information	32.54 MB	Download
ArcGIS License Manager 2019.0 (Linux) ArcGIS Desktop	Additional Information	103.13 MB	Download

Step 3 – Authorize Now



Step 3 – Authorization Complete



The screenshot shows the 'ArcGIS License Server Administrator - 2019.0' window. The left sidebar contains a tree view with the following items: 'ArcGIS ()', 'Start/Stop License Service', 'Configure', 'Availability' (selected), 'Authorization', and 'Diagnostics'. The main area displays a table of license features with columns: Feature, Version, Expires, Total, and Available. A dropdown menu is set to 'Concurrent'. Below the table are 'Refresh' and 'View License Usage' buttons. The status bar at the bottom indicates 'License Server Status: RUNNING' and includes 'Help', 'OK', 'Cancel', and 'Apply' buttons.

ArcGIS License Server Administrator - 2019.0

Double-click a feature for more information. Concurrent

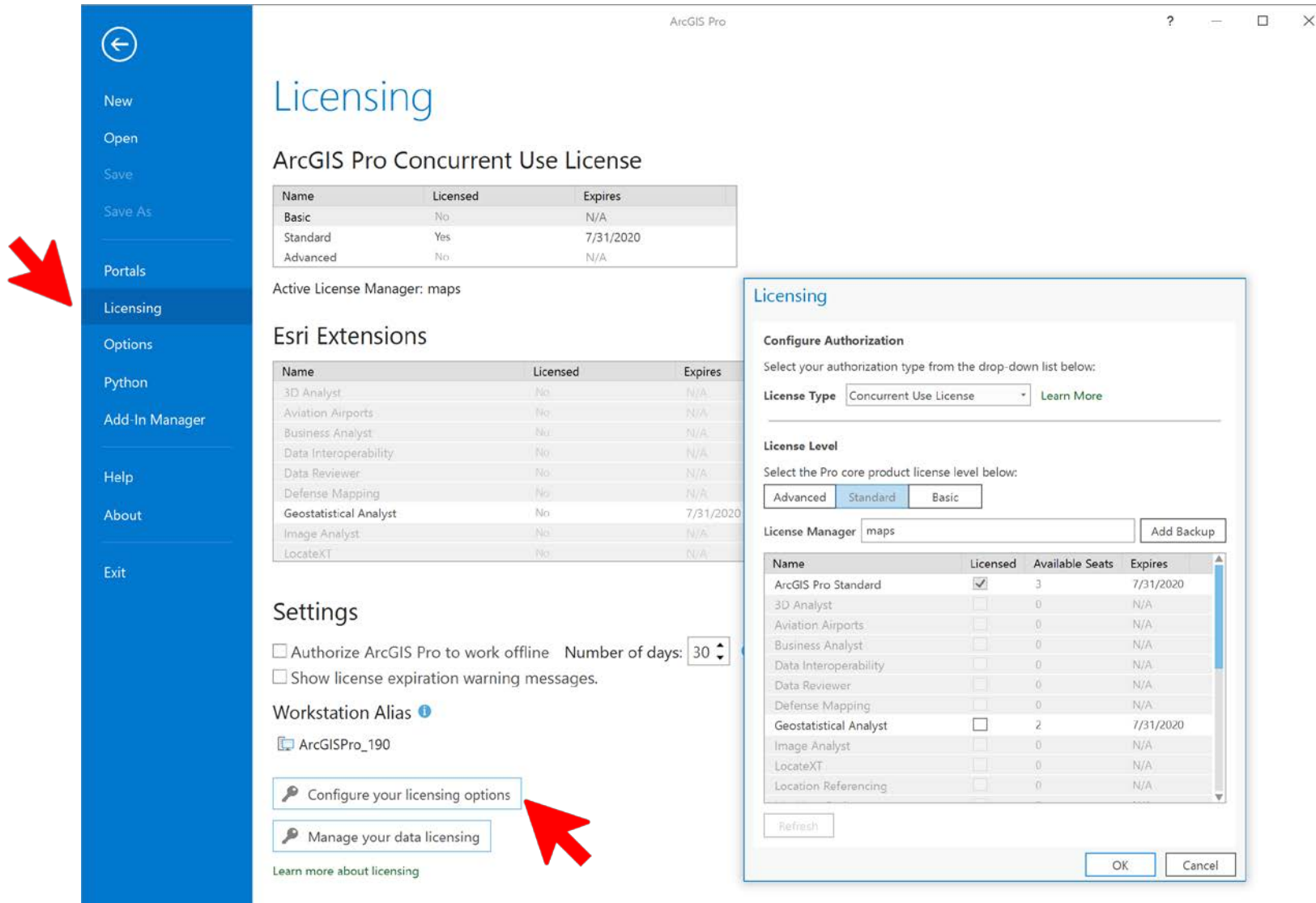
Feature	Version	Expires	Total	Available
ArcGIS Pro Advanced	1.4-2.4	31-Jul-2020	4	2
ArcGIS Pro Basic	1.4-2.4	31-Jul-2020	28	14
ArcGIS Pro Standard	1.4-2.4	31-Jul-2020	10	4
Desktop Advanced	10.1-10.7	permanent	8	2
Desktop Basic	10.1-10.7	permanent	30	25
Desktop Standard	10.1-10.7	permanent	26	13
3D Analyst Desktop	10.1-10.7	permanent	1	1
ArcStorm	10.1-10.7	permanent	8	4
ArcStormEnable	10.1-10.7	permanent	8	4
Geostatistical Analyst	10.1-10.7	permanent	3	3
Geostatistical Analyst Pro	1.4-2.4	31-Jul-2020	4	2
MrSID	10.1-10.7	permanent	8	4
Network Analyst Desktop	10.1-10.7	permanent	3	3
Network Analyst Pro	1.4-2.4	31-Jul-2020	10	5
Plotting	10.1-10.7	permanent	8	4
Spatial Analyst Desktop	10.1-10.7	permanent	3	2
Spatial Analyst Pro	1.4-2.4	31-Jul-2020	6	3

Refresh

View License Usage

Help License Server Status: RUNNING OK Cancel Apply

Step 4 – Switch ArcGIS Pro to Concurrent



The screenshot shows the ArcGIS Pro interface with the 'Licensing' window open. A red arrow points to the 'Licensing' menu item in the left sidebar. The 'Licensing' window displays the 'ArcGIS Pro Concurrent Use License' section, which includes a table of license types and their expiration dates. Below this, the 'Esri Extensions' section shows a table of extensions and their license status. The 'Settings' section includes checkboxes for 'Authorize ArcGIS Pro to work offline' and 'Show license expiration warning messages'. The 'Workstation Alias' section shows the current alias 'ArcGISPro_190'. At the bottom, there are two buttons: 'Configure your licensing options' and 'Manage your data licensing', with a red arrow pointing to the 'Configure your licensing options' button.

Licensing

ArcGIS Pro Concurrent Use License

Name	Licensed	Expires
Basic	No	N/A
Standard	Yes	7/31/2020
Advanced	No	N/A

Active License Manager: maps

Esri Extensions

Name	Licensed	Expires
3D Analyst	No	N/A
Aviation Airports	No	N/A
Business Analyst	No	N/A
Data Interoperability	No	N/A
Data Reviewer	No	N/A
Defense Mapping	No	N/A
Geostatistical Analyst	No	7/31/2020
Image Analyst	No	N/A
LocateXT	No	N/A

Settings

☐ Authorize ArcGIS Pro to work offline. Number of days: 30

☐ Show license expiration warning messages.

Workstation Alias

ArcGISPro_190

[Configure your licensing options](#)

[Manage your data licensing](#)

[Learn more about licensing](#)

Licensing

Configure Authorization

Select your authorization type from the drop-down list below:

License Type: **Concurrent Use License** [Learn More](#)

License Level

Select the Pro core product license level below:

Advanced **Standard** Basic

License Manager: maps [Add Backup](#)

Name	Licensed	Available Seats	Expires
ArcGIS Pro Standard	<input checked="" type="checkbox"/>	3	7/31/2020
3D Analyst	<input type="checkbox"/>	0	N/A
Aviation Airports	<input type="checkbox"/>	0	N/A
Business Analyst	<input type="checkbox"/>	0	N/A
Data Interoperability	<input type="checkbox"/>	0	N/A
Data Reviewer	<input type="checkbox"/>	0	N/A
Defense Mapping	<input type="checkbox"/>	0	N/A
Geostatistical Analyst	<input type="checkbox"/>	2	7/31/2020
Image Analyst	<input type="checkbox"/>	0	N/A
LocateXT	<input type="checkbox"/>	0	N/A
Location Referencing	<input type="checkbox"/>	0	N/A

[Refresh](#)

[OK](#) [Cancel](#)

Step 5 – Remove your Named-User Licenses

- Login to ArcGIS Online
- Remove ArcGIS Pro Named-User Licenses equal to the number of now concurrent licenses.
- Notify your ArcGIS Pro Users 😊