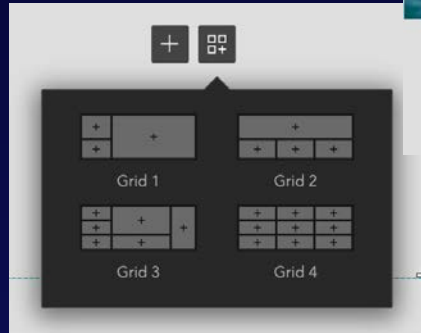




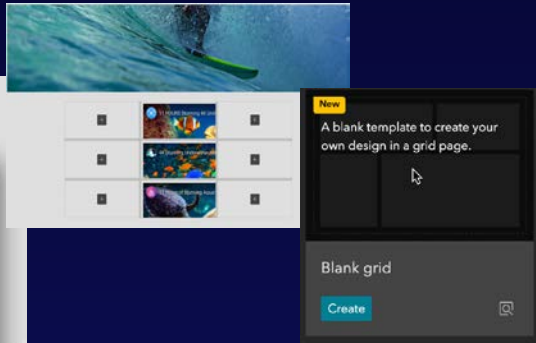
What's New & Coming in ArcGIS Experience Builder

Jianxia Song

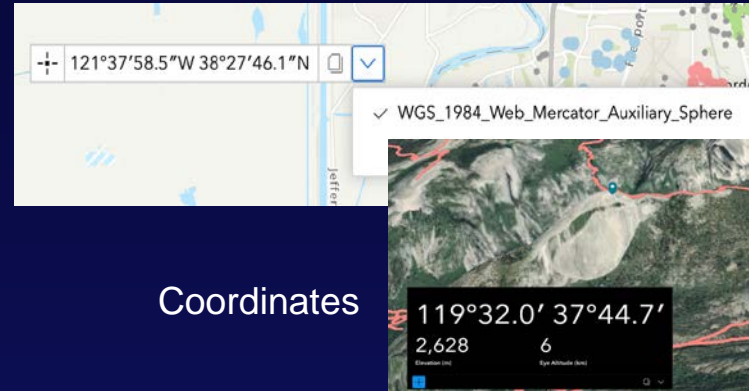
New Widgets in 2022



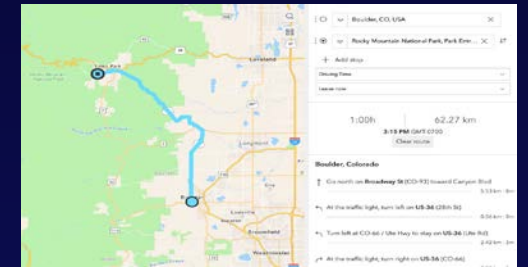
Grid



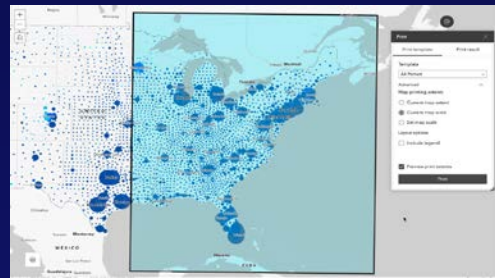
Blank grid template



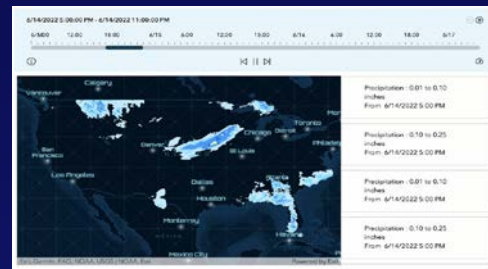
Coordinates



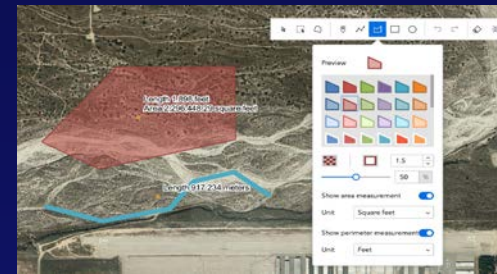
Directions



Print



Timeline



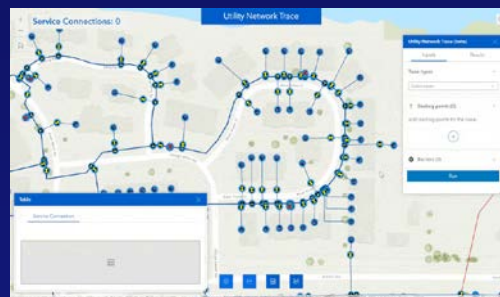
Draw



3D Toolbox



Floor Filter



Utility Network Trace

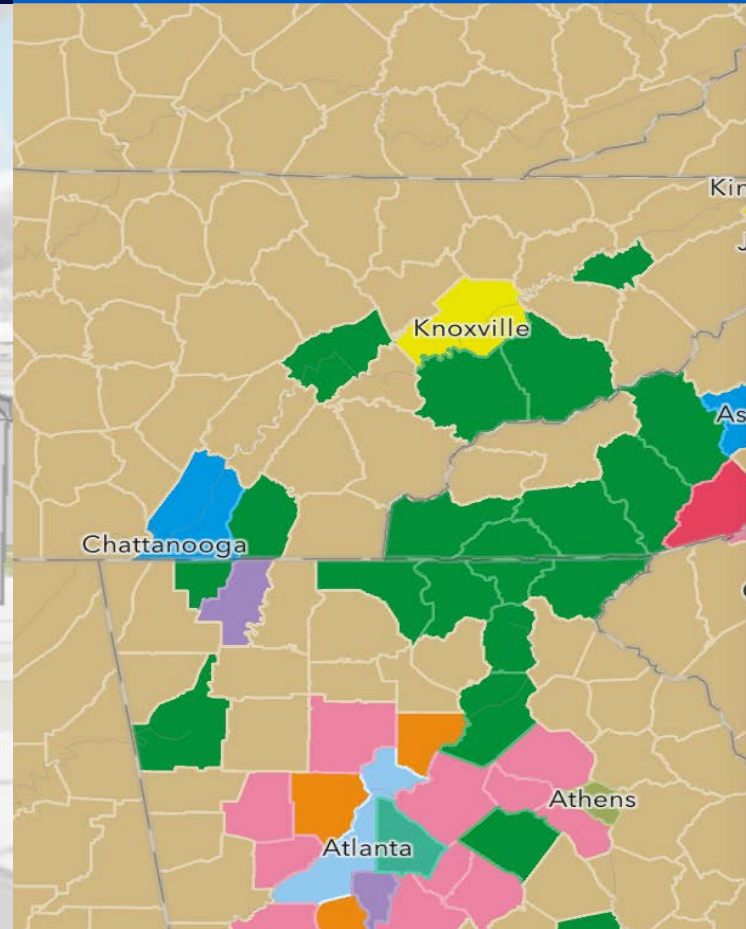


Business Analyst

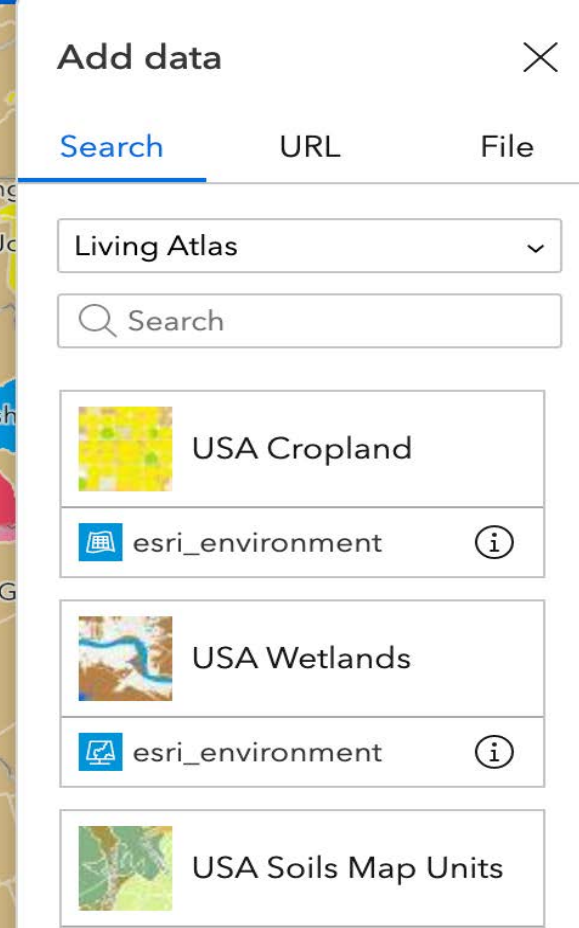
New Features in February



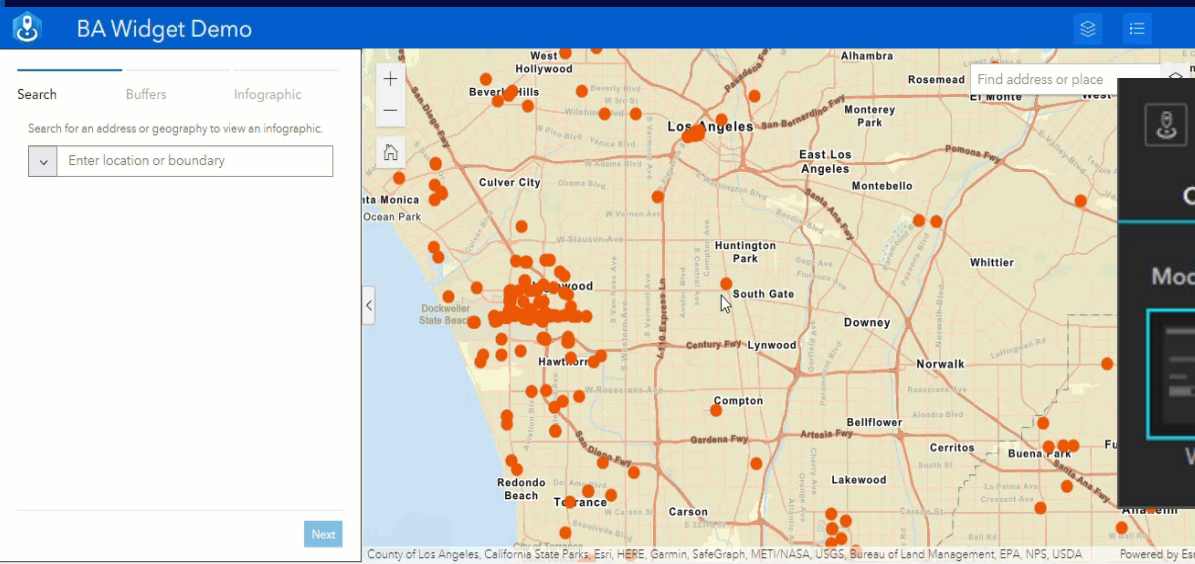
Slice tool



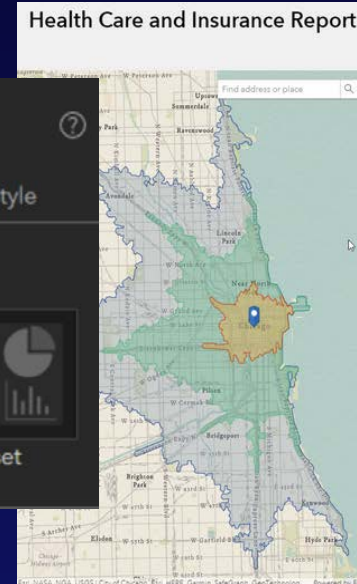
Add Data



Business Analyst



Workflow mode

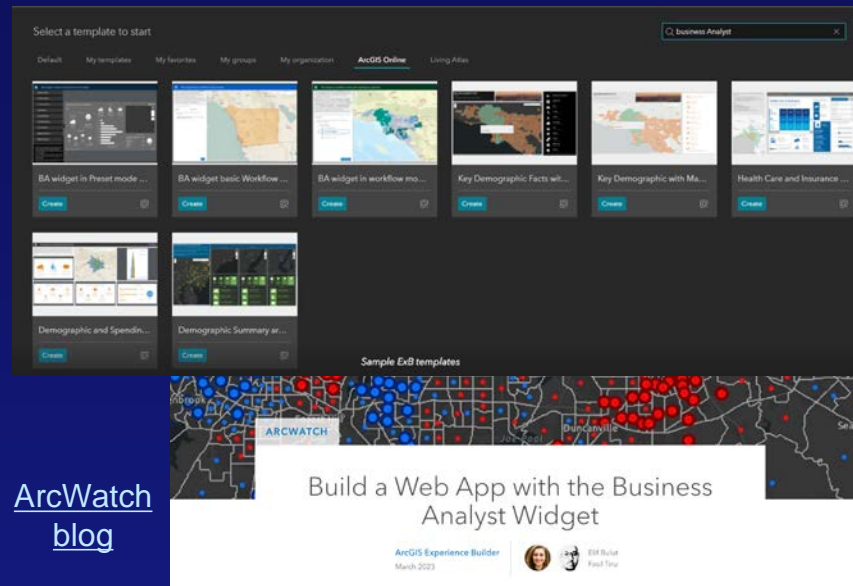


Preset mode



- [Home](#) > [All Communities](#) > [Products](#) > [ArcGIS Experience Builder](#) > [ArcGIS Experience Builder Blog](#)
- [The Business Analyst Widget in Experience Builder ...](#)
- [The Business Analyst Widget in Experience Builder is coming out of beta with great new features.](#)
- [How to create an Experience Builder application with Business Analyst widget in Preset mode.](#)
- [How to create an Experience Builder application with Business Analyst widget in Workflow mode.](#)
- [Find and use Business Analyst web experience templates](#)

4 Blogs in the community

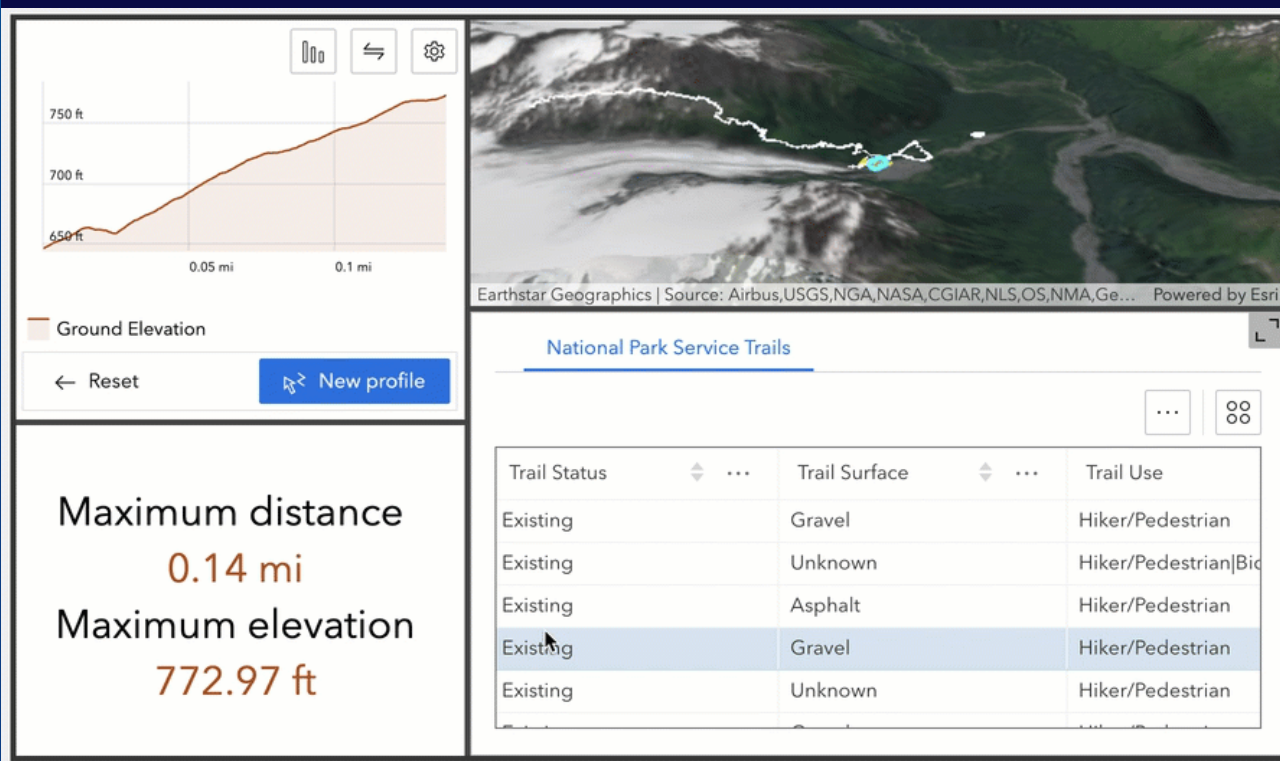


ArcWatch blog

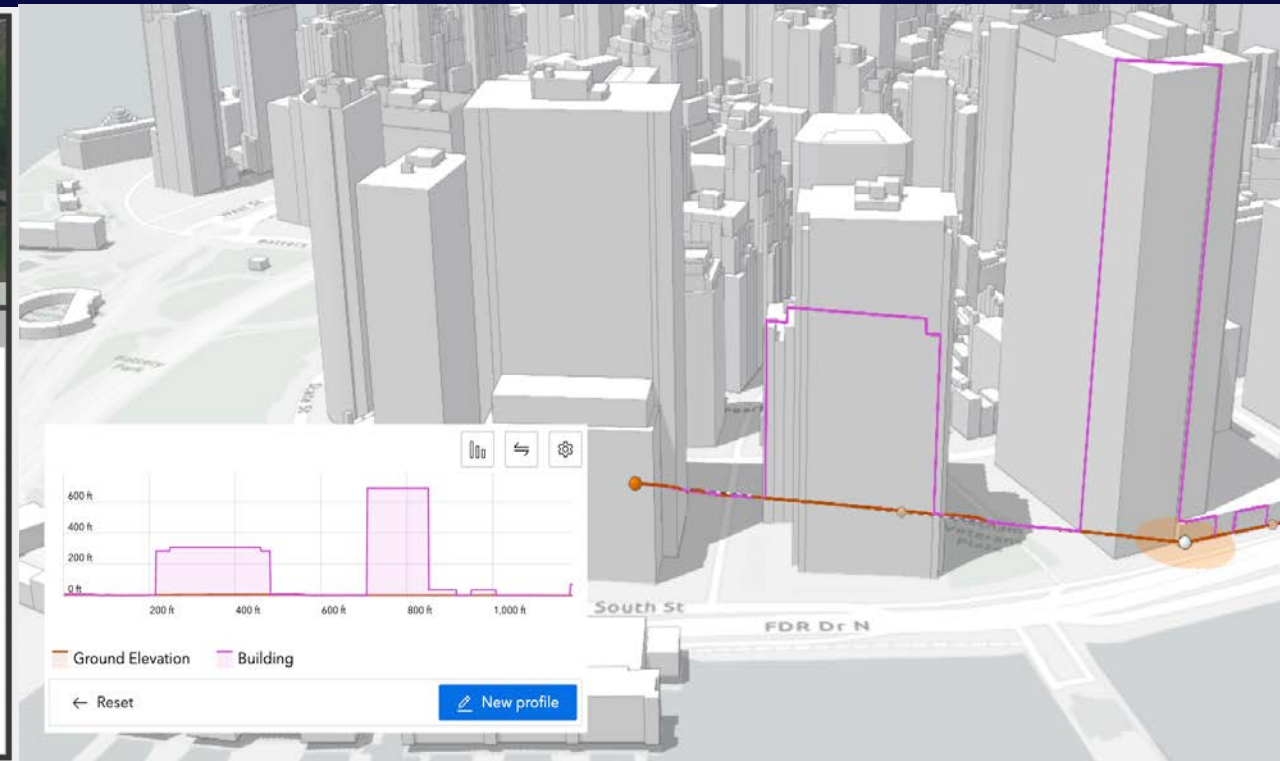


Action

Elevation Profile



Action & Output data source



3D

Column chart



Bar chart



Line chart



Area chart



Pie



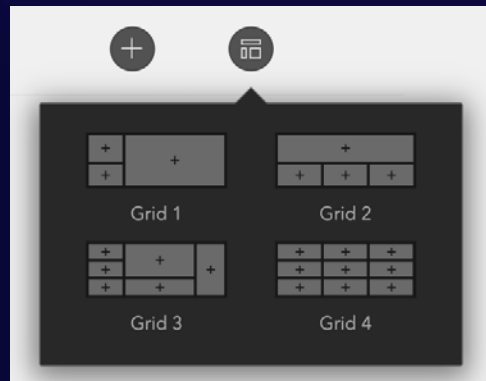
Scatter plot



Histogram

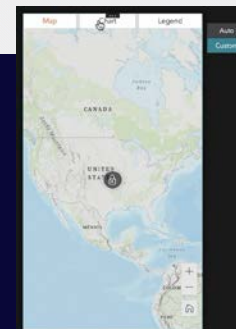
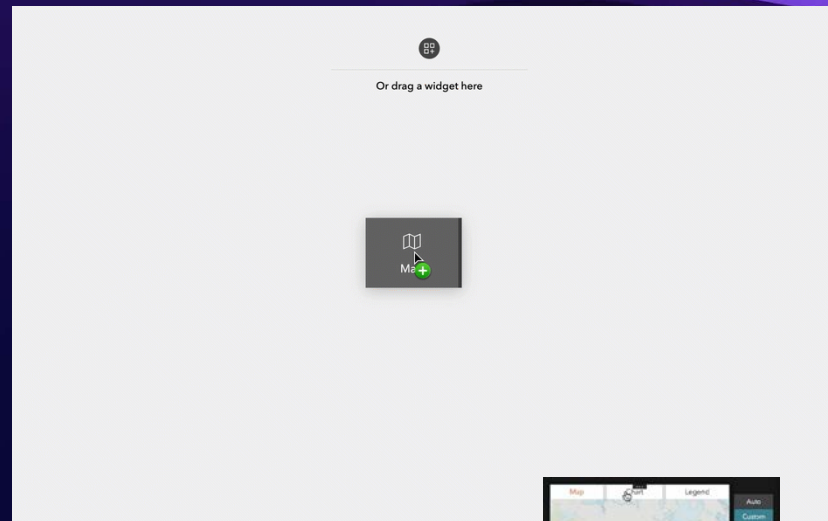


Charts

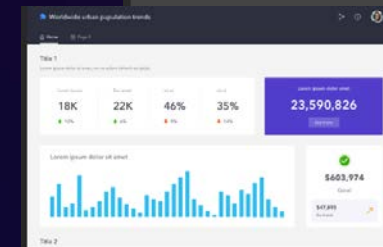


New Grid Widget

Blank Grid Template



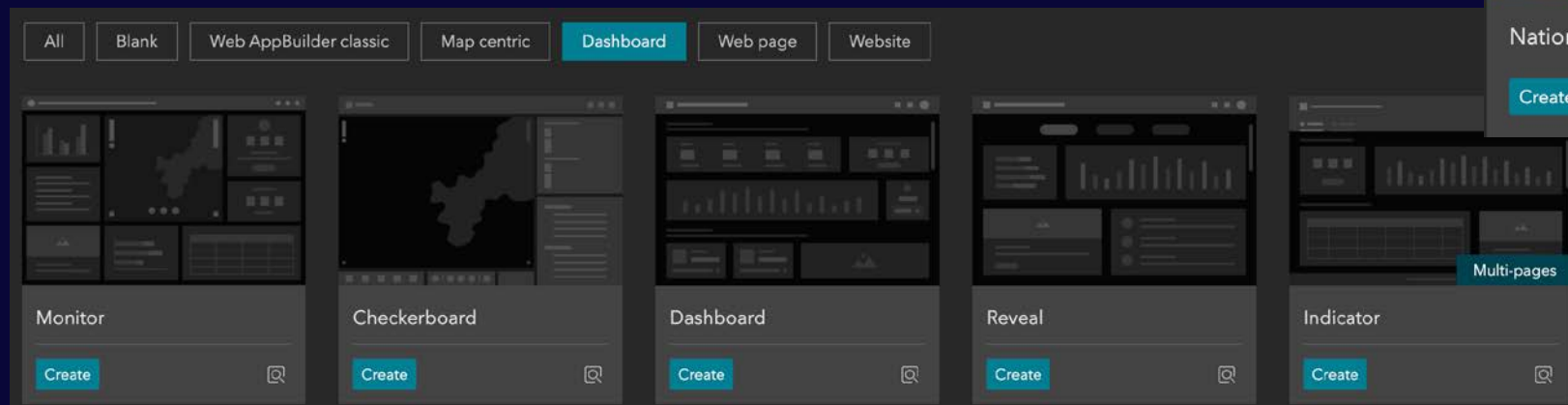
Growth of Urban Catering...



Worldwide Urban Populat...



National Parks



Templates

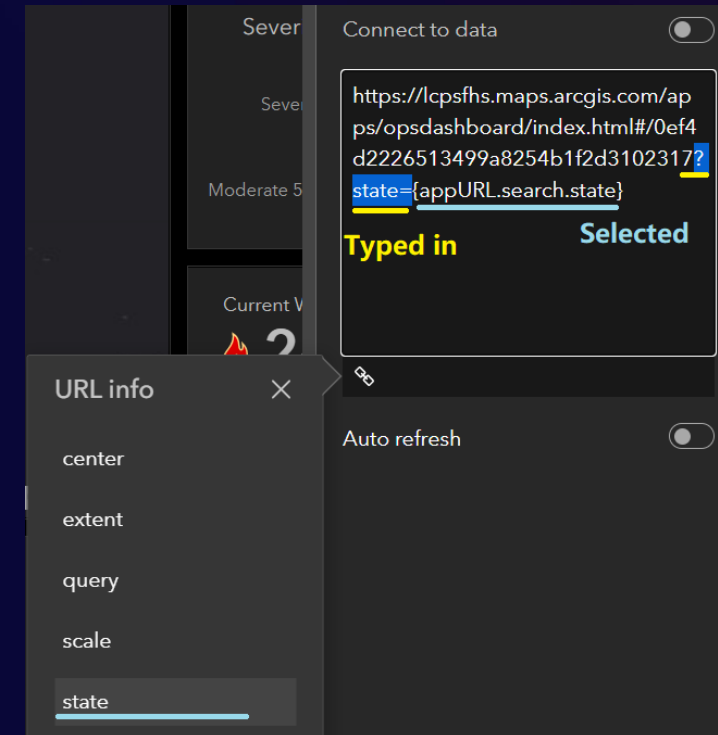
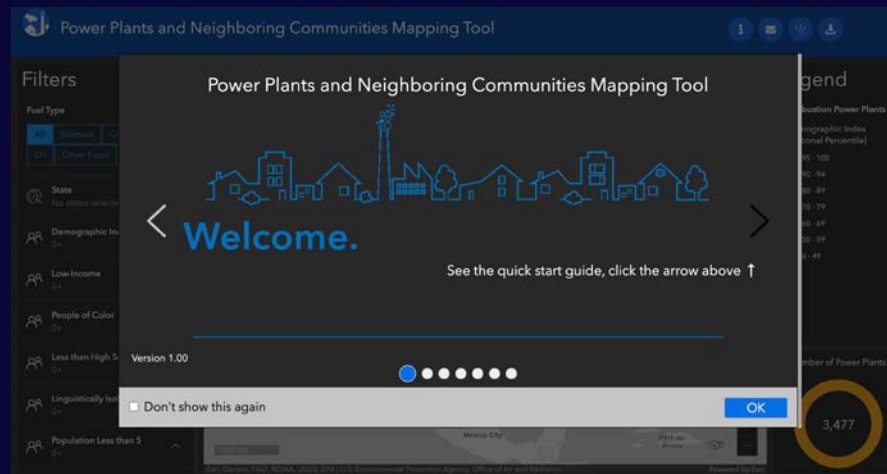
Integration with ArcGIS Dashboards



Two dashboards, one intelligent URL

Pass URL parameters to embedded Dashboards

Add a splash screen to your dashboards



Add Experience Builder Custom Widgets in ArcGIS Enterprise 11

Application type

☐ Web mapping

☐ Desktop

☐ Mobile

☐ Application extension (AppBuilder)

☒ Experience Builder widget

☐ Other application

Manifest URL

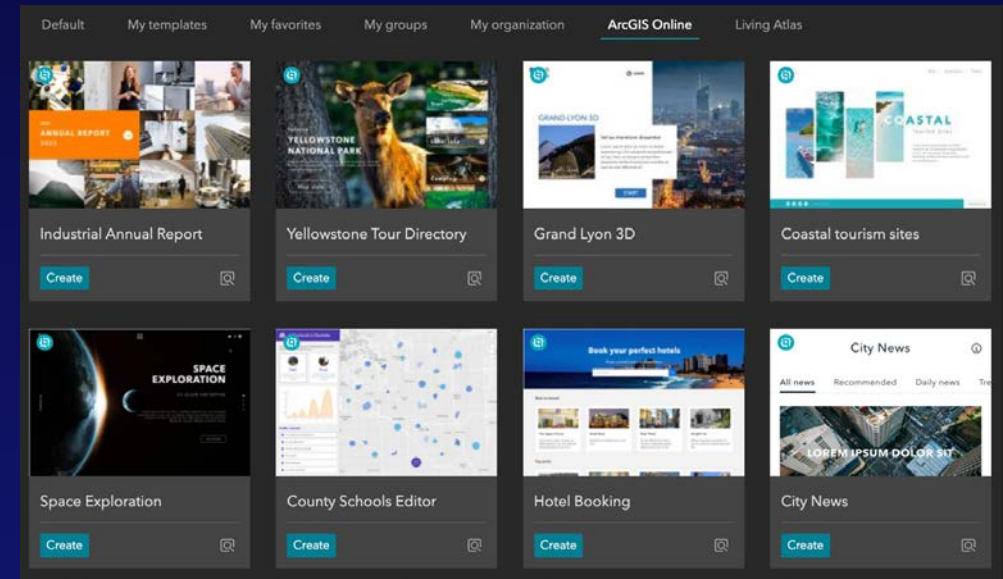
`https://qlqllu.github.io/www-host/exb_widgets/eLocate/manifest.json`



[Document](#)
[Blog](#)

Allow to Access Newer Version

- Starting v1.10, import apps from ArcGIS Online/Enterprise without upgrade
 - New features in higher version will break after import
- Starting ArcGIS Enterprise 11.1, create apps from templates in ArcGIS Online



2023 Roadmap

Q1 2023

- Add Data widget
- Business Analyst widget (out of beta)
- Utility Network Trace widget (out of beta)
- New Slice tool in 3D Toolbox widget
- New Histogram chart in Charts

Q2 2023

- Basemap Gallery widget
- Swipe widget
- Near Me widget (include capabilities in Situation Awareness, Screening, Info Summary)
- Related table editing
- Accessibility

Q4 2023

- Geoprocessing widget
- Analysis widget
- Image Measurement widget
- App URL parameters
- Mobile-first design

What's Coming In ArcGIS Enterprise 11.1

New Widgets

- **3D Toolbox** adds 3D effects and analysis tools to web scenes, including daylight, weather, shadow cast, and line of sight tools.
- **Coordinates** displays coordinates for maps and scenes.
- **Floor Filter** allows you to explore floor-aware maps and scenes made with ArcGIS Indoors.
- **Grid** is a layout container you can use to position and organize content in a grid on a page.
- **Print** widget allows printing web maps and includes options for previewing extents, selecting layouts, and more.
- **Timeline** allows viewing temporal data from web maps, feature layers, and map service layers to see how data changes over time.
- **Utility Network Trace** allows running traces in a utility network to optimize paths for resources to travel.

Major enhancements

- The new Grid full-screen page layout allows you to add a page that behaves like a Grid widget.
- You can now use the URL option to set a link to go to an email address, phone number, and more.
- When you update the sharing level of an application, you are prompted to also update the sharing levels of any contained data sources or items.
- Filter allows resetting all filters to their original states.
- You can now place layout widgets such as Sidebar and Column directly onto the map.



Web AppBuilder to Experience Builder

Migrtation

Will Reach Significant Parity at the
End of 2023

Web AppBuilder Retirement Plan

- The developer edition will retire in July 2024, alongside the legacy 3.x version of ArcGIS API for JavaScript.
- Web AppBuilder in ArcGIS Enterprise will be *deprecated* as of now. The final release of Web AppBuilder as part of ArcGIS Enterprise will be planned to be H1 2025.
- Web AppBuilder in ArcGIS Online will retire at the end of 2025.

Web AppBuilder Roadmap for Retirement Blog

- [Blog](#)
- Timelines
- FAQ
- Migration resources



What does retirement mean?

- In general
 - No further bug fixes or enhancements
 - Updates to browsers could introduce functional or security issues which will not be addressed by Esri
 - No technical support from Esri
 - Your apps will continue to work
- Developer Edition: Downloads are still available. The developer edition pages will be updated to reflect its status as retired technology.
- ArcGIS Enterprise: Web AppBuilder continues to be fully supported and will continue to be supported in accordance with the ArcGIS Enterprise product lifecycle. However, it will only receive critical bug fixes, such as security updates, and is otherwise in maintenance mode with no functional enhancements being planned.
- ArcGIS Online: While the existing apps continue to work, new apps can't be created.

Will I be able to add custom widgets to ArcGIS Enterprise?

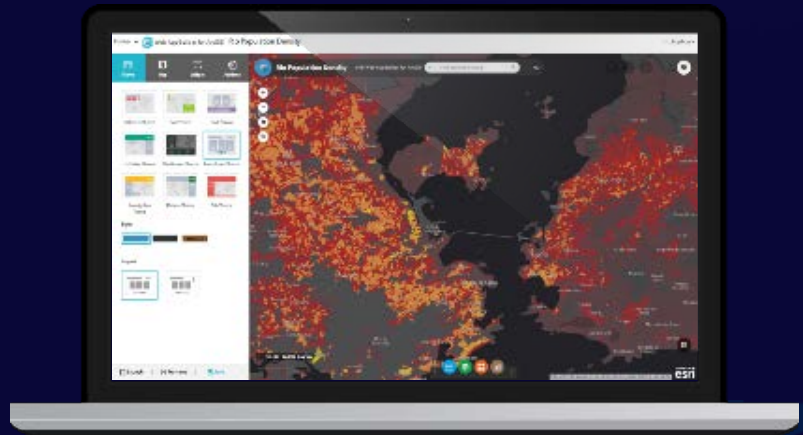
- Starting with ArcGIS Enterprise 11.0, you can add Experience Builder custom widgets to ArcGIS Enterprise
- The feature of adding Web AppBuilder custom widgets to ArcGIS Enterprise is deprecated and relies on an unsupported developer edition version of ArcGIS Web AppBuilder

What migration paths do I have?

- Migrate to ArcGIS Experience Builder
- Some widgets will not be migrated. Their functionality can be found in
 - Other Experience Builder widgets
 - Other ArcGIS apps
 - Foundational capabilities of ArcGIS
- Consider migrating to other ArcGIS apps when you see fit
 - ArcGIS Instant Apps, ArcGIS Dashboards, and ArcGIS StoryMaps

Functionality Matrix Document in the Community

[Link](#)



Web AppBuilder



Experience Builder

Migration Path for Widgets Not in the Plan

Other Products	ArcGIS Online Capabilities (Feature Layer, Arcade, Web Map)	Other Widgets or Deprecated	Custom
Parcel Drafter	Cost Analysis	Visibility	Grid Overlay
3DFx	Data Aggregation	Geo Lookup	Emergence Response Guide
Public Notification	Related Table Charts	Reviewer Dashboard	Threat Analysis
District Lookup			Distance and Direction
			Gridded Reference Graphic
			Stream

▼ Category

Clear

• Industry (52)

Business (11)

Education and Research (11)

Government: Local (12)

Government: State and Regional (14)

Government: National (5)

Health and Human Services (4)

Journalism and Media

Natural Resources (8)

Non-profits and NGOs (3)

Public Safety (9)


Transportation (1)

Utilities

Urban Planning (1)

Features (52)

Case Studies (6)




Gray's Reef National Marine Sanctuary

Help conserve the incredible marine resources of Gray's Reef National Marine Sanctuary with this virtual fishing guide.



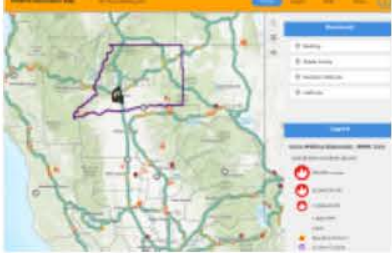
Power Plants and Neighboring Communities Mapping Tool

The map identifies the locations of power plants and highlights the key demographics of people living within three miles of those plants.



RenewMI Project Viewer

This project viewer contains past and present projects from the Remediation and Redevelopment Division (RRD). These are state-funded environmental remediation projects, as well as a few non-state funded remediation sites of interest.



City of Redding's Wildfire Information Map

View wildfire activity, traffic information, and other wildfire-associated information in the greater Redding area.




Kansas Situation Report

The Kansas Situation Report brings together data from Emergency Management, Weather and Mapping organizations to support emergency response, situational awareness and preparedness




Oregon Wildfire Response and Recovery Overview

This web experience displays key data regarding the response and recovery due to the 2020 Oregon Wildfires.



Environment Agency Geomatics Hub

Discover how the Environment Agency captures, processes, and analyzes the data they capture.

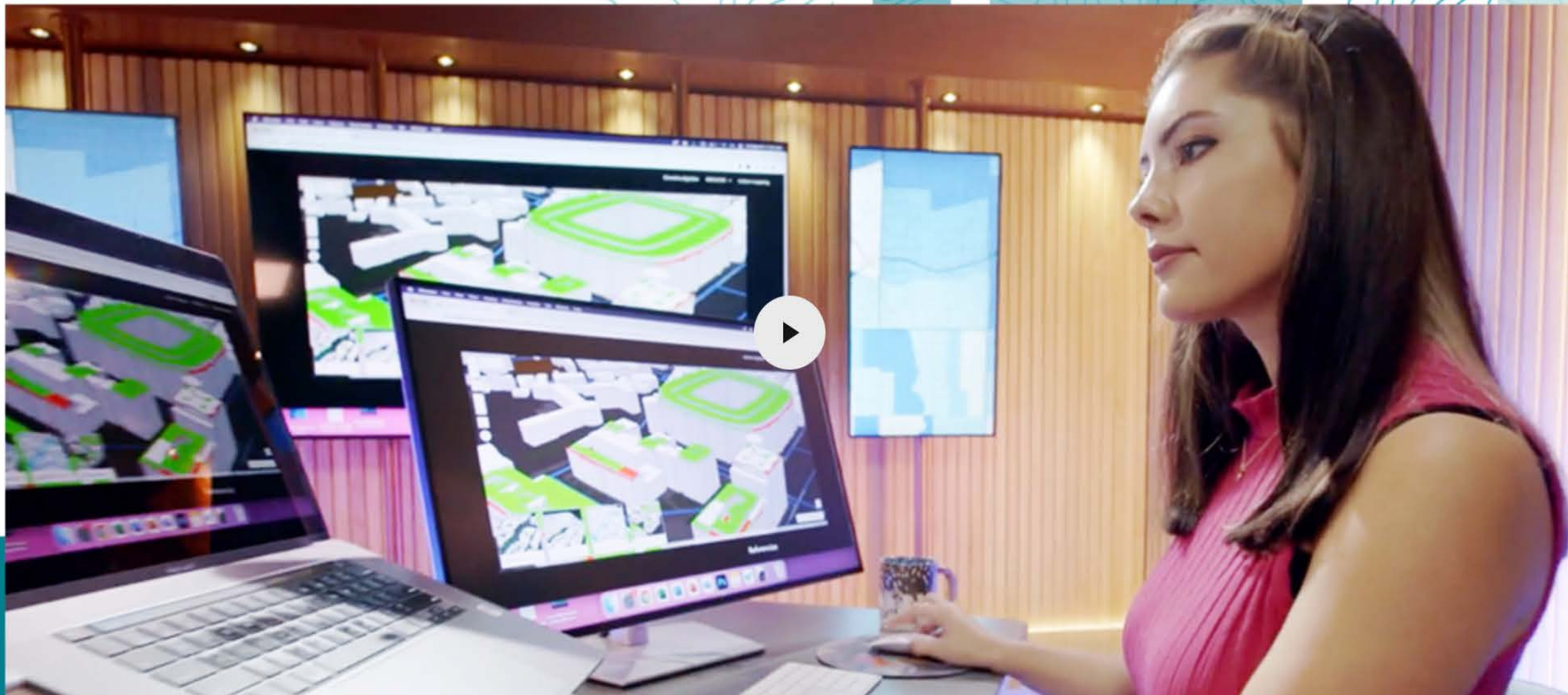


Is My River Fit to Play in?

The Rivers Trust has released this interactive map which aims to help shed the light on the reality of sewage pollution and allow river users to weigh up the risks before taking to the water.

If you can envision it, you can build it

Amplify your data, maps, and apps by putting them all in one place.



Custom Widgets Migration

Migrating from Web AppBuilder

Introduction

ArcGIS Experience Builder is different from Web AppBuilder in a variety of ways. Because of these differences, directly converting custom widgets and themes from Web AppBuilder to Experience Builder is not possible. Even though it is a manual process, here are some tips, techniques, and recommended practices to consider as you are re-building your widget or theme for Experience Builder.

Tip

This is not meant to be an exhaustive list, and the process is still a manual re-write process for the developer. These steps are provided to help with preparation and planning when re-building a widget within Experience Builder.

Core concepts

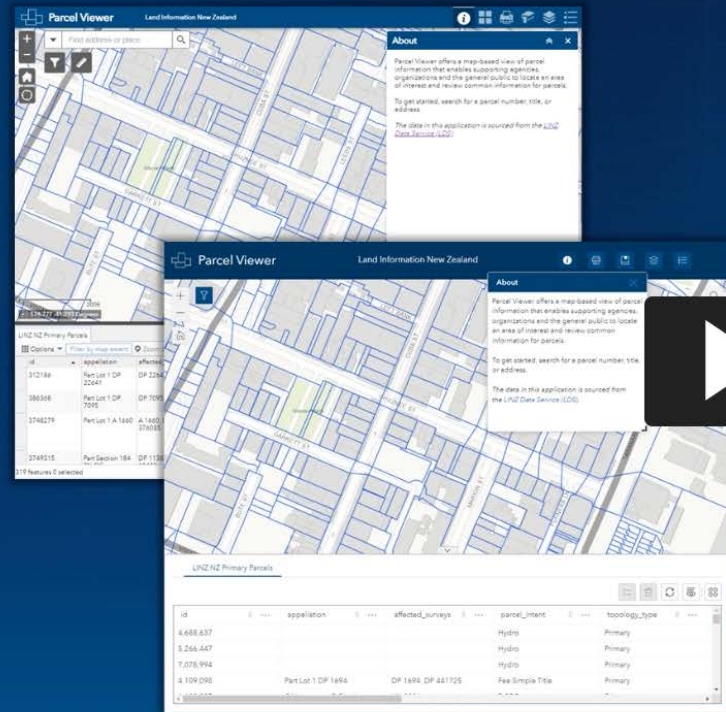
Introduction

ArcGIS Experience Builder can be extended through built-in widgets. This is possible by using Experience Builder's extensibility.

- ArcGIS API for JavaScript 4.x
- React + Redux framework
- Bootstrap 4 for user interface
- HTML5

Migration Video

https://mediaspace.esri.com/media/t/1_t5fhpa0a



Re-create a Web
AppBuilder App Using
Experience Builder



Custom Widgets Migration

Migrating from Web AppBuilder

Introduction

ArcGIS Experience Builder is different from Web AppBuilder in a variety of ways. Because of these differences, directly converting custom widgets and themes from Web AppBuilder to Experience Builder is not possible. Even though it is a manual process, here are some tips, techniques, and recommended practices to consider as you are re-building your widget or theme for Experience Builder.

Tip

This is not meant to be an exhaustive list, and the process is still a manual re-write process for the developer. These steps are provided to help with preparation and planning when re-building a widget within Experience Builder.


Core concepts

Introduction

ArcGIS Experience Builder can be extended through built-in widgets. This is possible by using Experience Builder's extensibility framework.

- ArcGIS API for JavaScript 4.x
- React + Redux framework
- Bootstrap 4 for user interface
- HTML5

Helpful Resources

Community

All CommunitiesArcGIS Id

Videos

The [ArcGIS Experience Builder channel](#) on Kaltura has new videos available with more tutorials coming soon.

Product Introductions

- [Getting Started with ArcGIS Experience Builder](#)
- [#AtHomeGIS: Getting Started with ArcGIS Experience Builder](#)

What's New Videos

- [ArcGIS Experience Builder March 2022 Updates](#)
- [ArcGIS Experience Builder December 2021 Updates](#)
- [ArcGIS Experience Builder September 2021 Updates](#)

Tutorials

- [Modernize Your ArcGIS Web AppBuilder Apps Using Experience Builder](#)
- [Getting Started with Themes and Basic Layout in ArcGIS Experience Builder](#)
- [Getting Started with Layouts in ArcGIS Experience Builder](#)
- [Getting Started with Templates and Widgets in ArcGIS Experience Builder](#)
- [Styling Your Web Apps using Size and Position in ArcGIS Experience Builder](#)
- [Publish Apps Made in ArcGIS Experience Builder](#)
- [Getting Started with Pages in ArcGIS Experience Builder](#)
- [Integrating ArcGIS Experience Builder with Other Apps and Using Dynamic Charts](#)
- [Getting Started with Data Source in ArcGIS Experience Builder](#)

Blog Articles

Here is a link to all [ArcGIS Experience Builder blog articles](#) that are sorted by date so you can easily find the most recent blog. Here are blogs organized by category.

- [ArcGIS Experience Builder Overview and Concepts](#)

Release Announcements:

- [What's New in ArcGIS Experience Builder / June 2022](#)
- [What's New in ArcGIS Experience Builder / March 2022](#)
- [What's New in ArcGIS Experience Builder / December 2021](#)

Developer Edition:

- [Add Custom Widgets in ArcGIS Enterprise](#)
- [What's New in ArcGIS Experience Builder Developer Edition / version 1.7](#)
- [What's New in ArcGIS Experience Builder Developer Edition / version 1.8](#)
- [Get Started with ArcGIS Experience Builder Developer Edition](#)
- [Enable ArcGIS Experience Builder Developer Edition to Work with Signed Certificates](#)
- [What's New in ArcGIS Experience Builder Developer Edition / version 1.7](#)



Widgets and Templates:

- [The Business Analyst InfoGraphic \(beta\) Widget](#)
- [Configure an Application to Trace a Utility Network](#)
- [Embed with URL parameters](#)
- [Create a Public Information App Using Experience Builder](#)
- [Get Started with ArcGIS Experience Builder - Gallery template](#)
- [Get started with ArcGIS Experience Builder Ribbon template](#)
- [Get Started with ArcGIS Experience Builder Foldable Template](#)

Home > All Communities > Products > ArcGIS Experience Builder > ArcGIS Experience Builder

> Helpful resources to get you started

Helpful resources to get you started

 2280  0 05-01-2020 05:44 PM

Discussion