



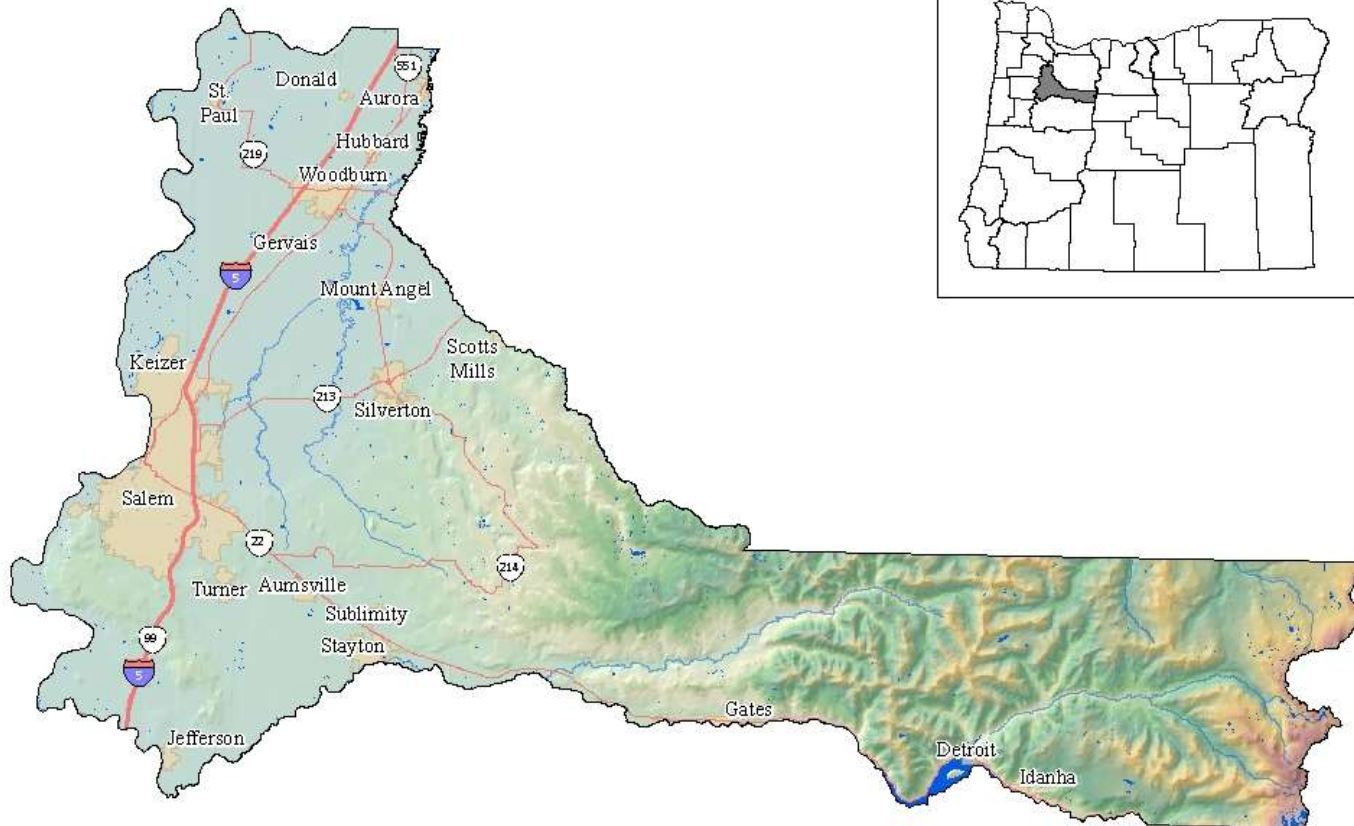
Oregon Office of Emergency Management



Marion County Profile

Updated October 2017

Geography



Contiguous counties:
Clackamas,
Jefferson, Linn,
Polk, Wasco,
Yamhill

Tribal nation relationships:
Warm Springs



DPS 7/18/17

Marion County Reference Map

This product is for informational purposes, and may not be suitable for legal, engineering or surveying purposes. This information or data is provided with the understanding that conclusions drawn from such information are the responsibility of the user.

- Interstate
- US Route
- State Highway
- Major Rivers
- Major Waterbodies
- City Limits



Overview

- Blue Book:
<http://bluebook.state.or.us/local/counties/counties24.htm>
- Census:
<https://www.census.gov/quickfacts/table/PST045216/41047,41>
- Incorporated Cities:
 - Aumsville, Aurora, Detroit, Donald, Gates, Gervais, Hubbard, Idanha, Jefferson, Keizer, Mill City, Mt. Angel, **Salem (State Capital)**, Scotts Mills, Silverton, St. Paul, Stayton, Sublimity, Turner, Woodburn



Legislative Information

US Congress

<u>District</u>	<u>Name</u>
5	Kurt Schrader (D)

State House

<u>District</u>	<u>Name</u>
15	Representative Andy Olson (R)
17	Representative Sherrie Sprenger (R)
18	Representative Vic Gilliam (R)
19	Representative Jodi Hack (R)
20	Representative Paul Evans (D)
21	Representative Brian Clem (D)
22	Representative Betty Komp (D)
23	Representative Mike Nearman (R)
24	Representative Jim Weidner (R)
25	Representative Bill Post (R)
26	Representative John Davis (R)
39	Representative Bill Kennemer (R)
59	Representative John Huffman (R)

State Senate

<u>District</u>	<u>Name</u>
8	Senator Sara Gelser (D)
9	Senator Fred Girod (R)
10	Senator Jackie Winters (R)
11	President Peter Courtney (D)
12	Senator Brian Boquist (R)
13	Senator Kim Thatcher (R)
20	Senator Alan Olsen (R)
30	Senate Republican Leader Ted Ferrioli (R)

Emergency Management Marion County



Home Agency

Marion County Public Works
5155 Silverton Rd NE
Salem, OR 97305
503-588-5108
mcem@co.marion.or.us

Grant Statistics

EMPG - \$152,068 (2016)

HMGP - \$0 (2016)

PDM - \$0 (2016)

SHSP - \$195,687 (2016)

- Includes COOP Planning, Public Safety Voice & Data Comms

OEM Government Liaison

Zach Swick
(503) 378-3233
E-mail: zach.swick@state.or.us

Ed Flick, Emergency Manager

Office Phone: (503) 365-3133 / Cell Phone:
(503) 991-6926
E-mail: eflick@co.marion.or.us

Krista Carter, Program Coordinator

Office Phone: (503) 588-5108 / Cell Phone:
(503) 932-3947
E-mail: kkcarter@co.marion.or.us

Erik Anderson, Program Coordinator

Office Phone: (503) 365-3186 / Office Cell:
(503) 798-5490
E-mail: eanderson@co.marion.or.us

Kathleen Silva, Emergency Preparedness Coordinator

Office Phone: (503) 365-3136 / Office Cell:
(971) 283-4002
E-mail: ksilva@co.marion.or.us

<http://www.co.marion.or.us/PW/EmergencyManagement>

OEM Locals List

OEM Grant Files

Emergency Management City of Salem



Home Agency

City of Salem Fire Department
595 Cottage St. NE
Salem, OR 97301
503-763-3331
rstevenson@cityofsalem.net

Roger Stevenson, Emergency Manager

Office Phone: (503) 763-3331
E-mail: rstevenson@cityofsalem.net

Grant Statistics

EMPG - \$120,585 (2016)
HMGP - \$0 (2016)
PDM - \$0 (2016)
SHSP - \$77,353 (2016)

- Includes Bomb Team Equip/Train (Salem)

County Liaison

Ed Flick, Marion County Emergency Management
(503) 365-3133 / (503) 991-6926
E-mail: eflick@co.marion.or.us

<http://www.cityofsalem.net/emergencies>

OEM Locals List

OEM Grant Files



Hazard Profile

Hazard/Risk Analysis Summary

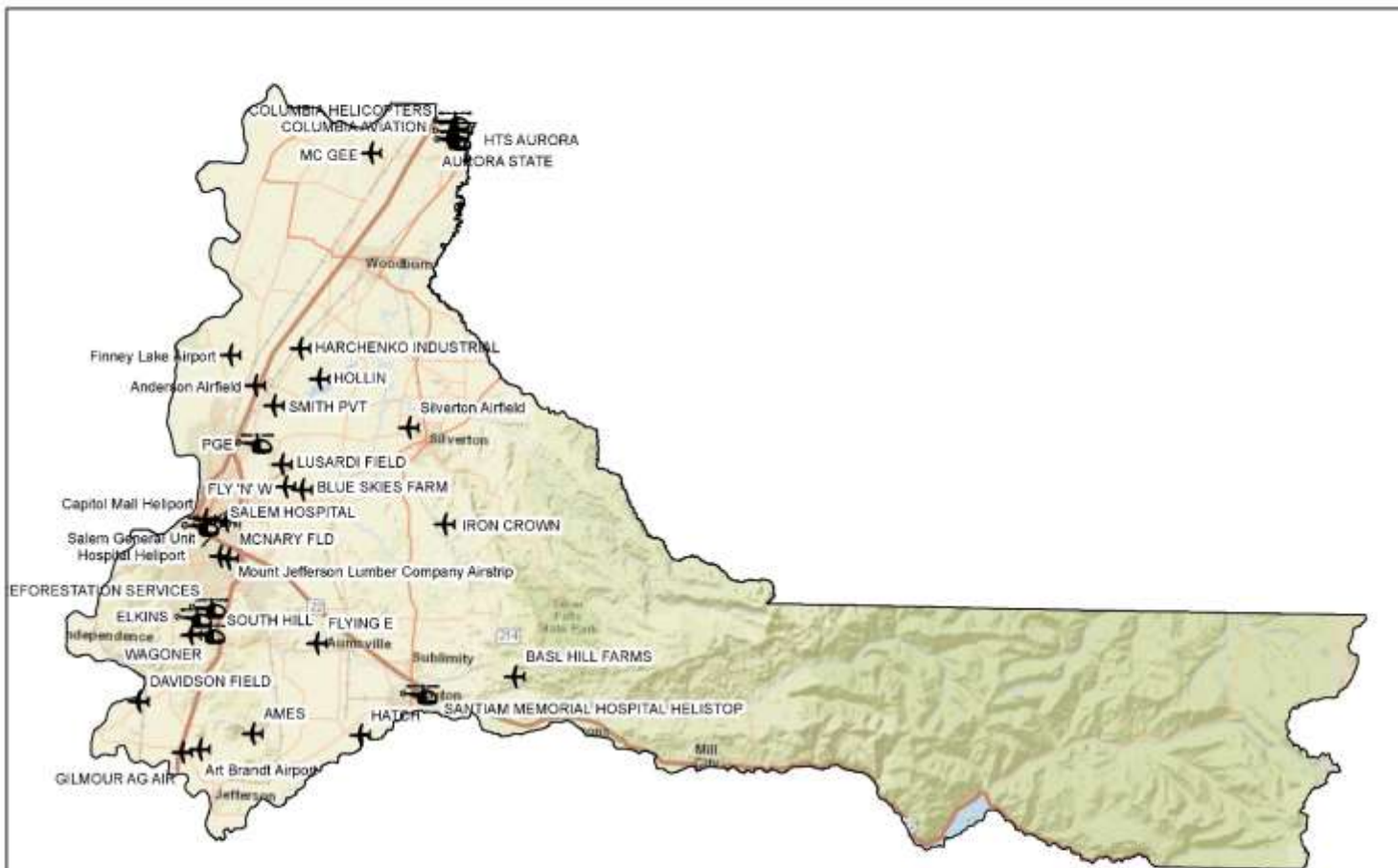
Hazard	Probability	Vulnerability
Animal Disease Outbreak	Possible	Moderate
Biological/Chemical/Cyber/Explosives/Radiological Attack/Terrorism	Possible	Moderate
Civil Disorder/Terrorism	Possible	High
Dam or Levee Failure	Unlikely	Moderate
Drought	Highly Likely	High
Earthquake	Highly Likely	High
Epidemic	Possible	Moderate
Extreme Weather - High Temperature	Likely	Moderate
Flood	Likely	High
HazMat Incident	Possible	High
Landslide	Likely	High
Pandemic	Possible	Moderate
Power Failure	Possible	Moderate
Radiological Release	Unlikely	Low
School/Workplace Violence	Possible	Moderate
Severe Weather/Storm	Highly Likely	High
Tornado	Unlikely	Low
Transportation Accident/Derailment	Possible	High
Volcanic Eruption	Unlikely	Low
Wildland Fire	Possible	Moderate

Disaster/Emergency Management Declaration History:

- 1964 Heavy Rains and Flooding (DR-184)
- 1974 Severe Storms, Snowmelt and Flooding (DR-413)
- 1993 Earthquake (DR-985)
- 1996 High Winds, Severe Storms and Flooding (DR-1099)
- 2004 Severe Winter Storms (DR-1510)
- 2005 Hurricane Katrina Evacuation (EM-3228)
- 2005 Drought
- 2009 Severe Winter Storm, Record and Near Record Snow (DR-1824)
- 2012 Severe Winter Storm, Flooding, Landslides, and Mudslides (DR-4055)
- 2015 Drought



ESF 1 – Transportation



General Stats

- 23 Private Use Airports
- 9 Heliports
- 2 Airports Public Use
 - Aurora (State)
 - McNary (City)



DPS 3/15/17

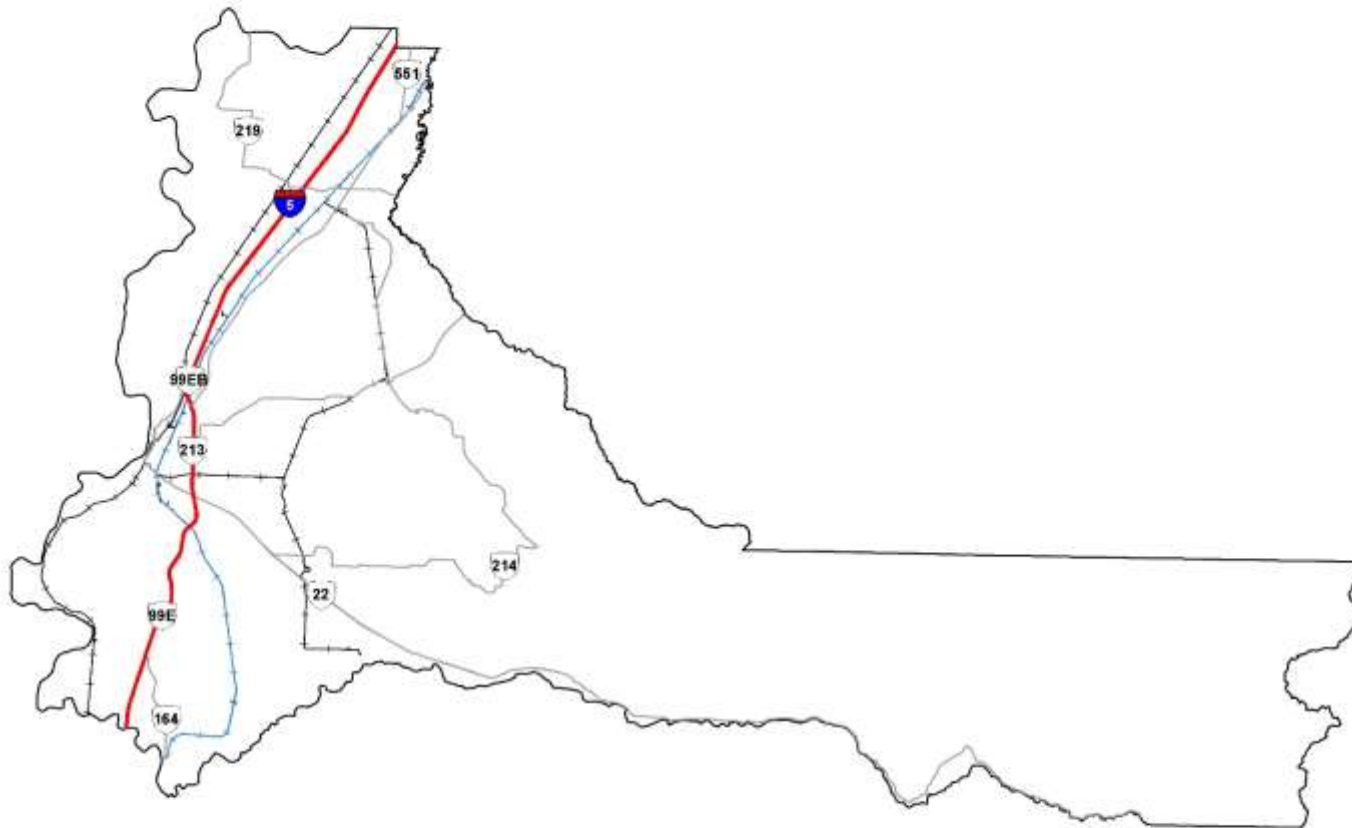
Marion County Airports and Heliports

This product is for informational purposes, and may not be suitable for legal, engineering or surveying purposes. This information or data is provided with the understanding that conclusions drawn from such information are the responsibility of the user.





ESF 1 – Transportation



General Stats

- I-5 primary north/south route
- Railroad transport includes crude oil



DPS 3/15/17

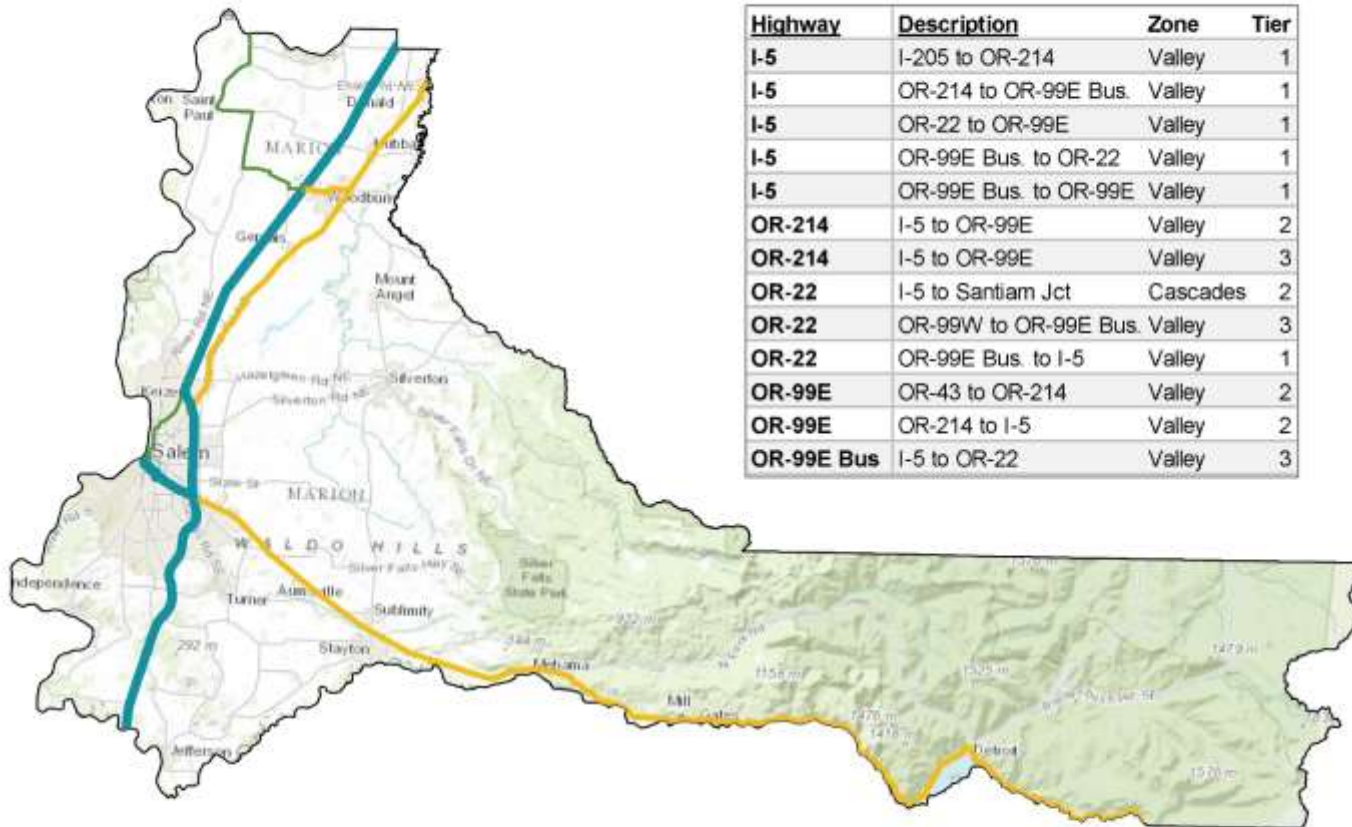
Marion County Transportation Routes

This product is for informational purposes, and may not be suitable for legal, engineering or surveying purposes. This information or data is provided with the understanding that conclusions drawn from such information are the responsibility of the user.

— Interstate
— Oregon Routes
- - - Crude Oil Routes
+ + + Railroads



ESF 1 – Transportation



Highway	Description	Zone	Tier
I-5	I-205 to OR-214	Valley	1
I-5	OR-214 to OR-99E Bus.	Valley	1
I-5	OR-22 to OR-99E	Valley	1
I-5	OR-99E Bus. to OR-22	Valley	1
I-5	OR-99E Bus. to OR-99E	Valley	1
OR-214	I-5 to OR-99E	Valley	2
OR-214	I-5 to OR-99E	Valley	3
OR-22	I-5 to Santiam Jct	Cascades	2
OR-22	OR-99W to OR-99E Bus.	Valley	3
OR-22	OR-99E Bus. to I-5	Valley	1
OR-99E	OR-43 to OR-214	Valley	2
OR-99E	OR-214 to I-5	Valley	2
OR-99E Bus	I-5 to OR-22	Valley	3

General Stats

- Bridges on the Willamette River carry heavy traffic and are not seismically retrofitted.
- There are a total of 150+ bridges in the county.



DPS 3/09/17

Marion County Seismic Lifeline Routes

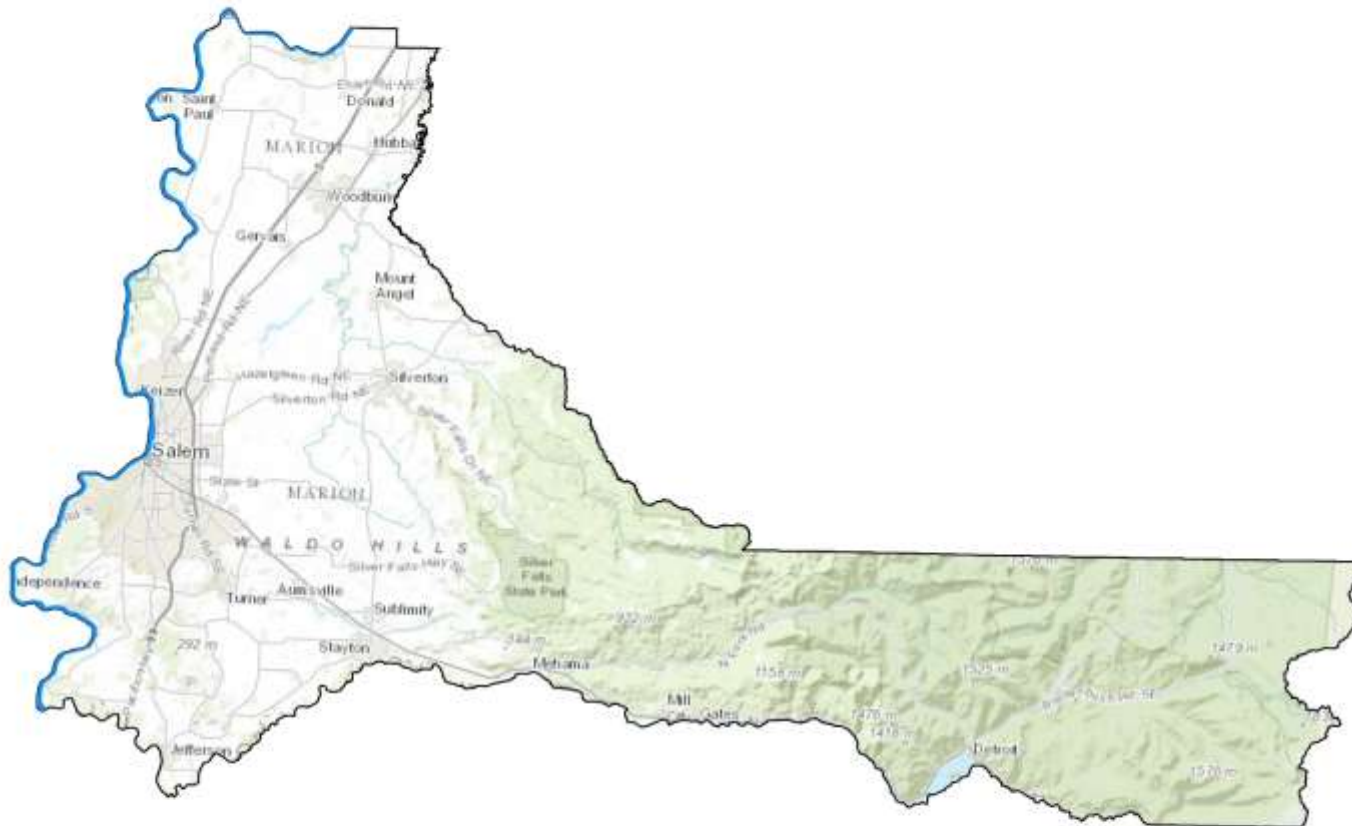
This product is for informational purposes, and may not be suitable for legal, engineering or surveying purposes. This information or data is provided with the understanding that conclusions drawn from such information are the responsibility of the user.

Seismic Lifeline Routes

- Tier 1
- Tier 2
- Tier 3



ESF 1 – Transportation



General Stats

- Navigable waterways include the Willamette River along the western and northern county line
- Responsibility for Detroit Reservoir (partnership with US Army Corps).



DPS 3/22/17

Marion County Navigable Waterways

This product is for informational purposes, and may not be suitable for legal, engineering or surveying purposes. This information or data is provided with the understanding that conclusions drawn from such information are the responsibility of the user.

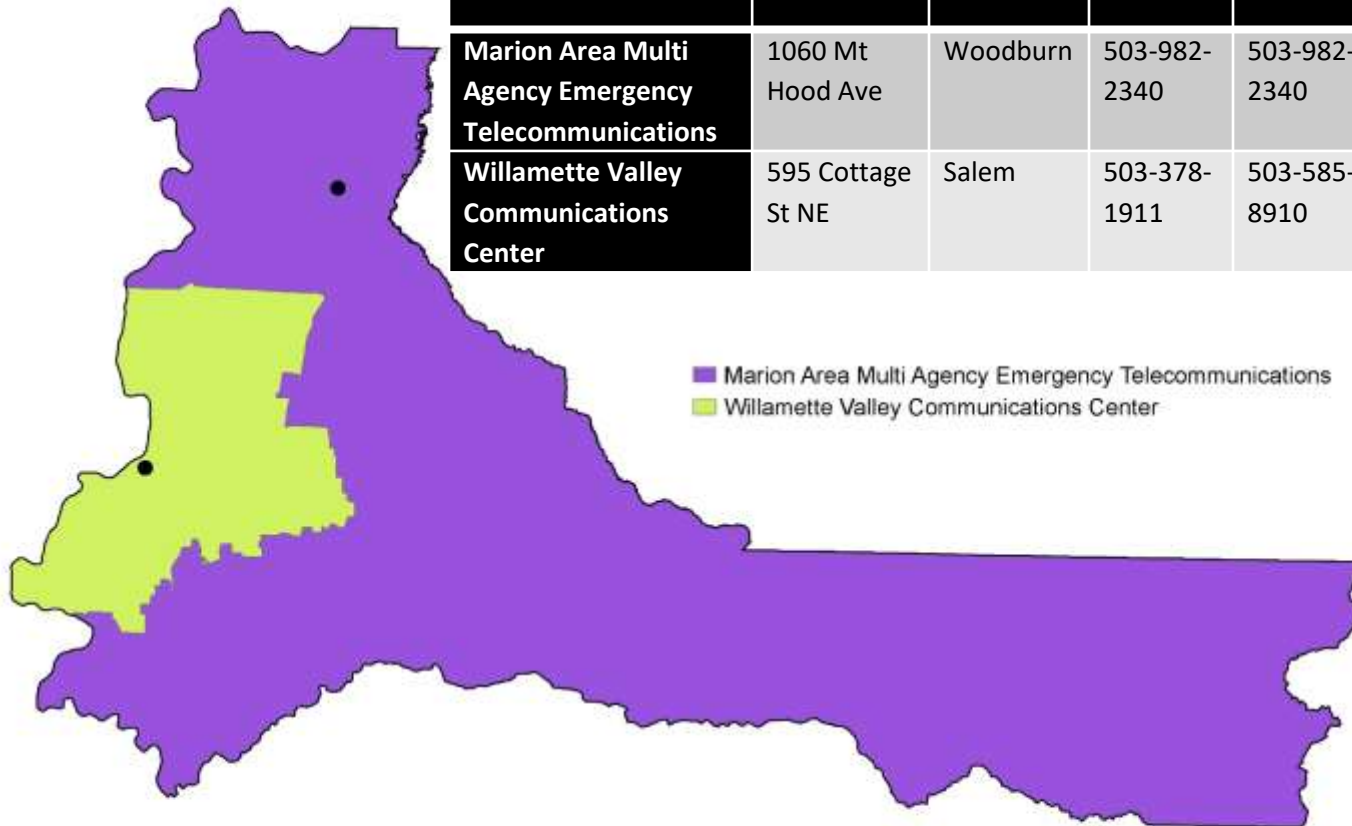
— Navigable Waterways



ESF 2 – Communications



PSAP Name	Address	City	Tel	Emergency
Marion Area Multi Agency Emergency Telecommunications	1060 Mt Hood Ave	Woodburn	503-982-2340	503-982-2340
Willamette Valley Communications Center	595 Cottage St NE	Salem	503-378-1911	503-585-8910



General Stats

- Willamette Valley Communications Center also serves Lincoln and Polk Counties



DPS 3/14/17

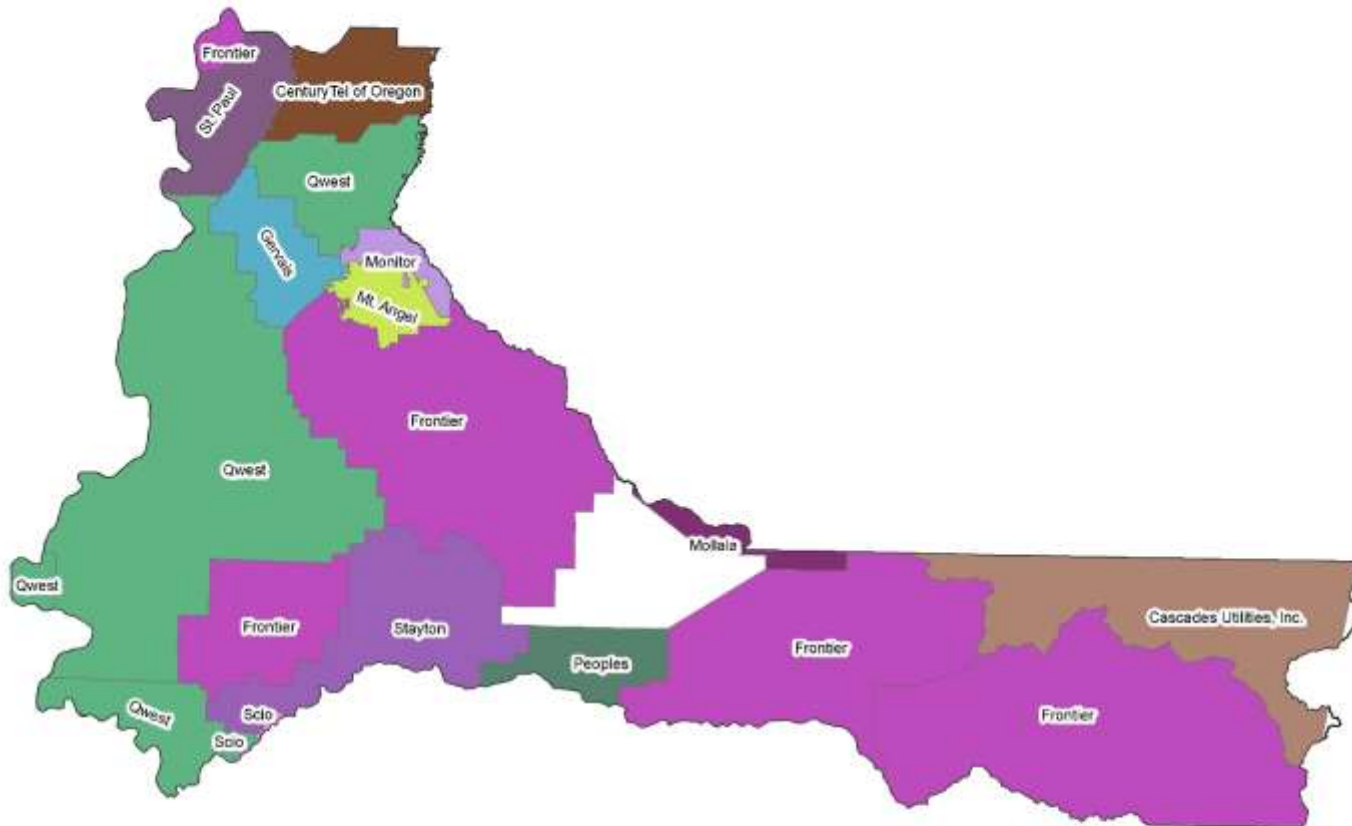
Marion County Public Safety Answering Points (PSAPs) Boundaries and Locations

● PSAP Locations

This product is for informational purposes, and may not be suitable for legal, engineering or surveying purposes. This information or data is provided with the understanding that conclusions drawn from such information are the responsibility of the user.



ESF 2 – Communications



General Stats

- Includes 19 different central offices and exchanges



DPS 3/14/17

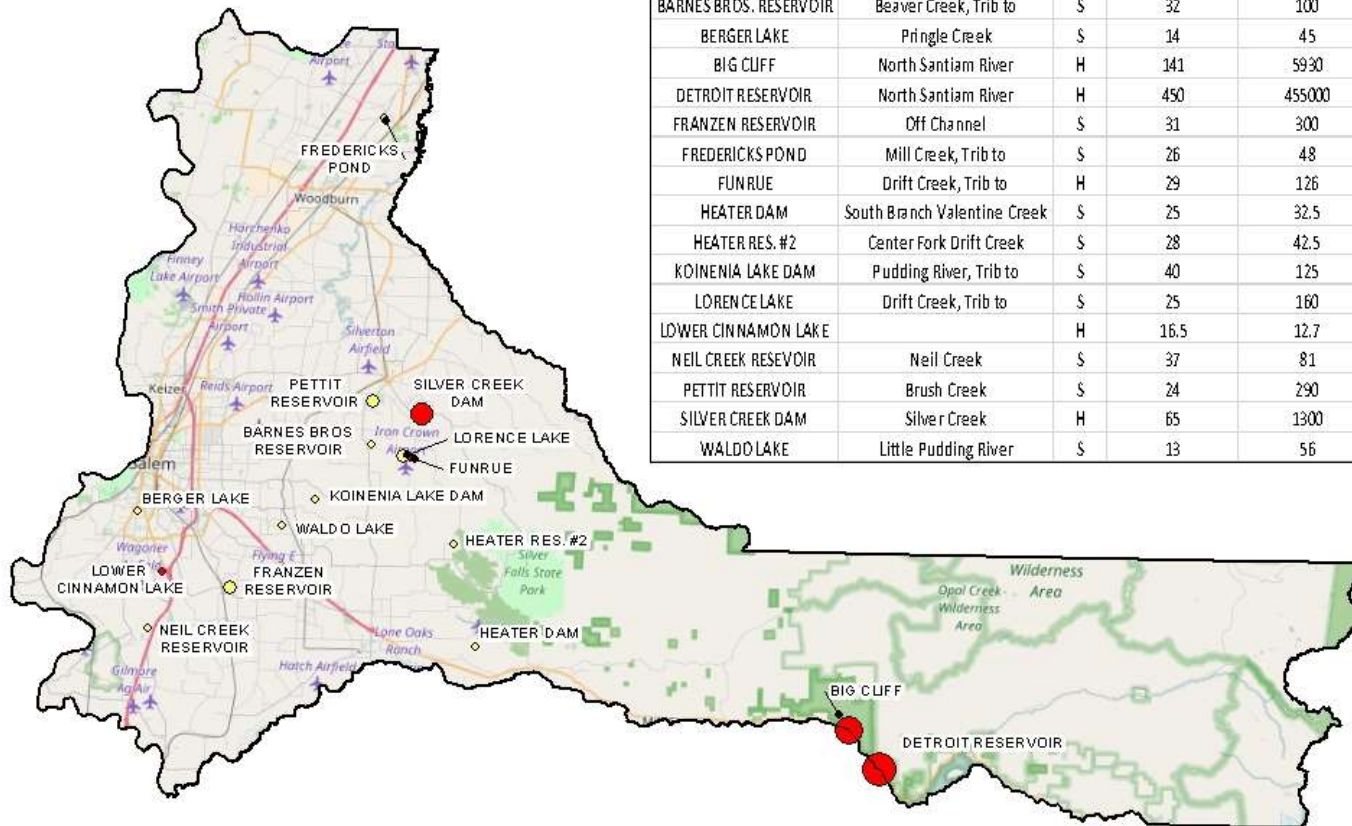
Marion County Telephone Company Allocated Service Territories

This product is for informational purposes, and may not be suitable for legal, engineering or surveying purposes. This information or data is provided with the understanding that conclusions drawn from such information are the responsibility of the user.

Cascades Utilities, Inc.	Mt. Angel
CenturyTel of Oregon	Peoples
Frontier	Qwest
Gervais	Scio
Mollala	St. Paul
Monitor	Stayton



ESF 3 – Public Works



Dam Name	River	Hazard	Dam Height (feet)	Storage (acre feet)
BARNES BROS. RESERVOIR	Beaver Creek, Trib to	S	32	100
BERGER LAKE	Pringle Creek	S	14	45
BIG CLIFF	North Santiam River	H	141	5930
DETROIT RESERVOIR	North Santiam River	H	450	455000
FRANZEN RESERVOIR	Off Channel	S	31	300
FREDERICKS POND	Mill Creek, Trib to	S	26	48
FUNRUE	Drift Creek, Trib to	H	29	126
HEATER DAM	South Branch Valentine Creek	S	25	32.5
HEATER RES. #2	Center Fork Drift Creek	S	28	42.5
KOINENIA LAKE DAM	Pudding River, Trib to	S	40	125
LORENCE LAKE	Drift Creek, Trib to	S	25	160
LOWER CINNAMON LAKE		H	16.5	12.7
NEIL CREEK RESEVOIR	Neil Creek	S	37	81
PETTIT RESERVOIR	Brush Creek	S	24	290
SILVER CREEK DAM	Silver Creek	H	65	1300
WALDO LAKE	Little Pudding River	S	13	56

General Stats

- 3 High Hazard Dams – storing a combined 1,431 acre feet
- 11 Significant Hazard Dams – storing a combined 1,280 acre feet
- Big Cliff and Detroit Dams border Linn and Marion Counties



DPS 7/18/17

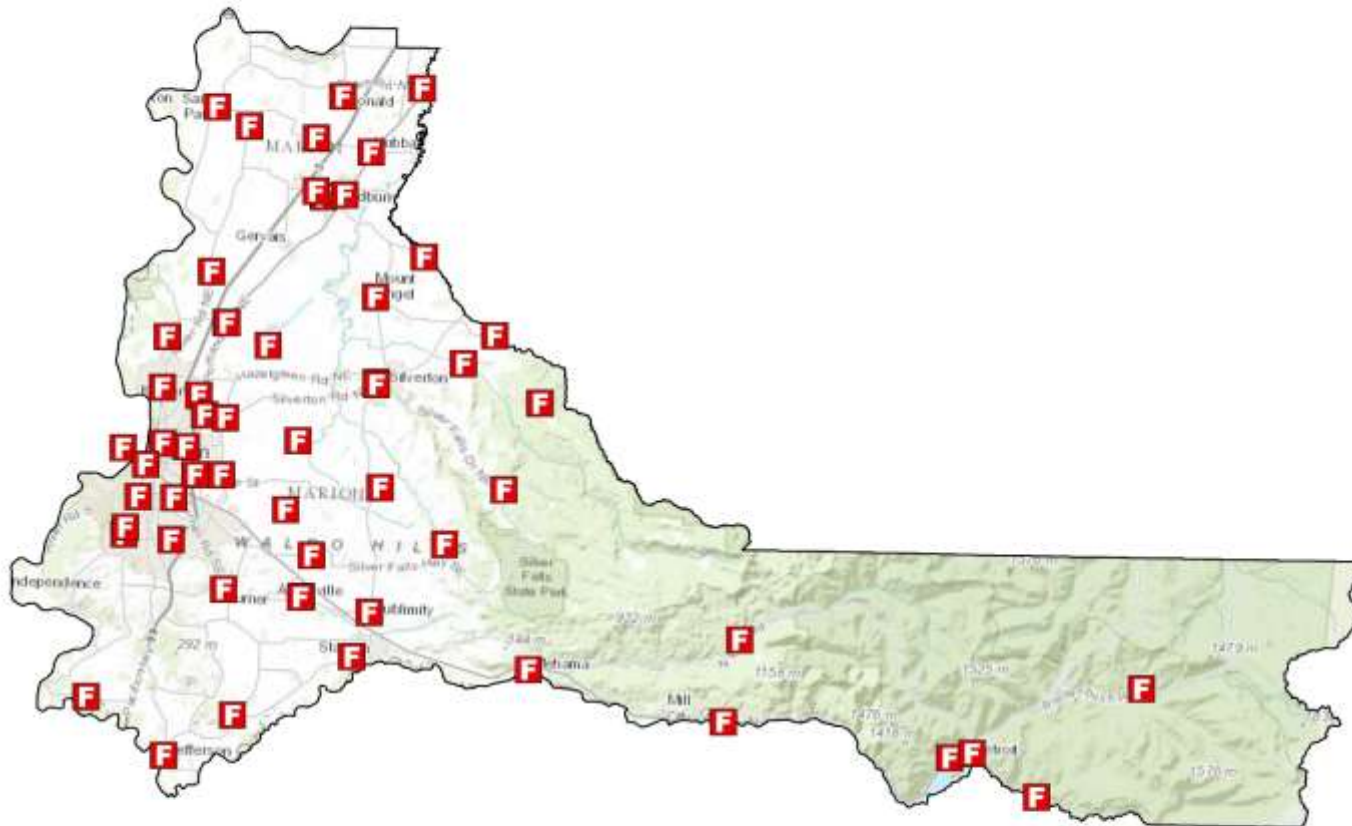
Marion County Dams

This product is for informational purposes, and may not be suitable for legal, engineering or surveying purposes. This information or data is provided with the understanding that conclusions drawn from such information are the responsibility of the user.

High Hazard	Significant Hazard
• up to 150 ac/ft	• up to 150 ac/ft
• up to 500 ac/ft	• up to 500 ac/ft
• up to 2000 ac/ft	• up to 2000 ac/ft
• up to 6000 ac/ft	• up to 6000 ac/ft
• up to 455000 ac/ft	• up to 455000 ac/ft



ESF 4 – Firefighting



General Stats

- 57 total fire stations representing 23 different fire departments



DPS 3/16/17

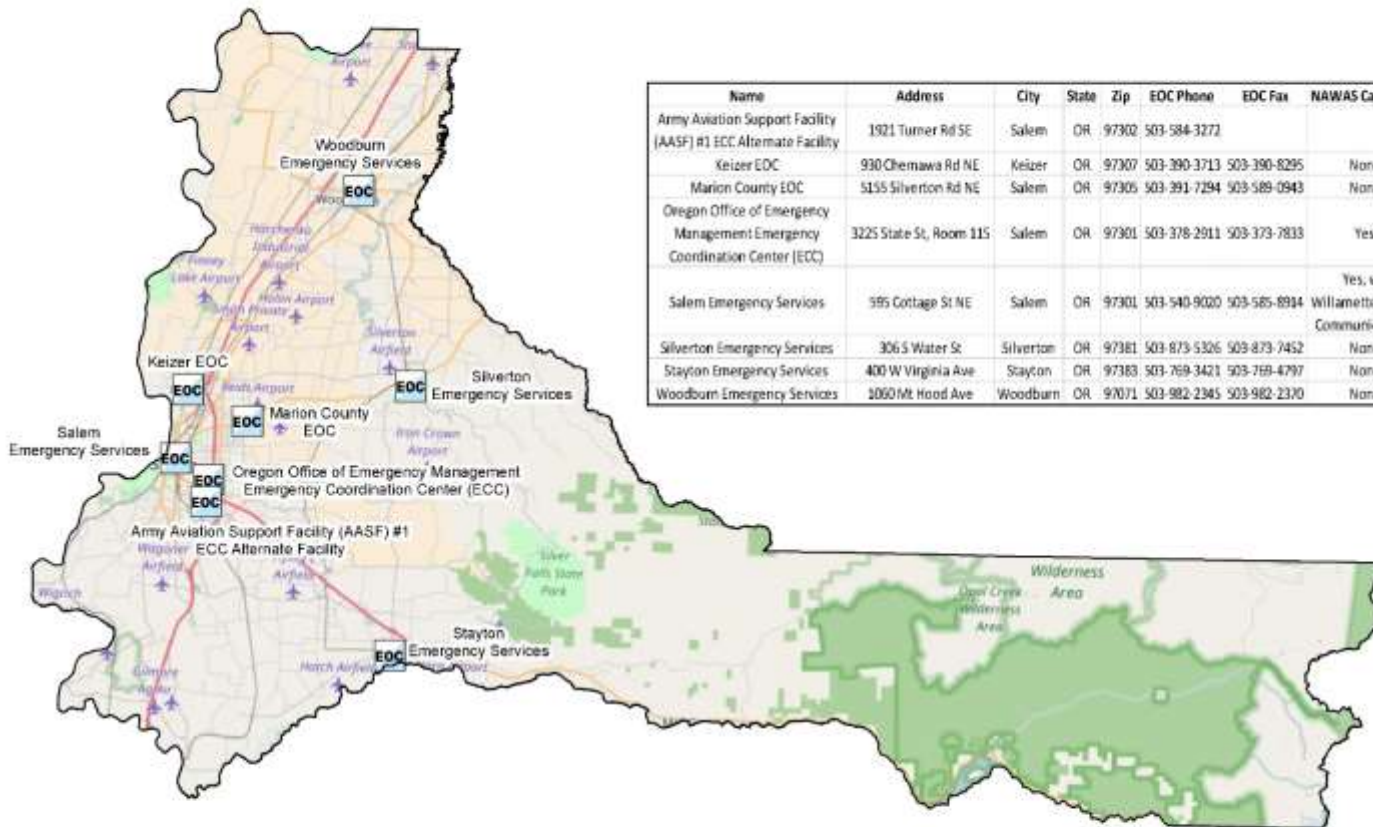
Marion County Fire Stations

This product is for informational purposes, and may not be suitable for legal, engineering or surveying purposes. This information or data is provided with the understanding that conclusions drawn from such information are the responsibility of the user.

F Fire Station



ESF 5 – Information and Planning



Name	Address	City	State	Zip	EOC Phone	EOC Fax	NAWAS Capability
Army Aviation Support Facility (AASF) #1 ECC Alternate Facility	1921 Turner Rd SE	Salem	OR	97302	503-584-3272		
Keizer EOC	930 Chemawa Rd NE	Keizer	OR	97307	503-390-3713	503-390-8295	None
Marion County EOC	5155 Silverton Rd NE	Salem	OR	97305	503-391-7294	503-589-0943	None
Oregon Office of Emergency Management Emergency Coordination Center (ECC)	3225 State St, Room 115	Salem	OR	97301	503-378-2911	503-373-7833	Yes
Salem Emergency Services	595 Cottage St NE	Salem	OR	97301	503-540-9020	503-585-8934	Yes, via Willamette Valley Communications
Silverton Emergency Services	306 S Water St	Silverton	OR	97381	503-873-5326	503-873-7452	None
Stayton Emergency Services	400 W Virginia Ave	Stayton	OR	97383	503-769-3421	503-769-4797	None
Woodburn Emergency Services	1060 Mt Hood Ave	Woodburn	OR	97071	503-982-2345	503-982-2370	None

General Stats

- Salem Emergency Services co-located with Willamette Valley Communications Center



DPS 3/15/16

Marion County Emergency Operation Centers (EOCs)

This product is for informational purposes, and may not be suitable for legal, engineering or surveying purposes. This information or data is provided with the understanding that conclusions drawn from such information are the responsibility of the user.

EOC Locations



ESF 6 – Mass Care



General Stats

- 50 total shelters
(National Shelter System)



DPS 3/15/17

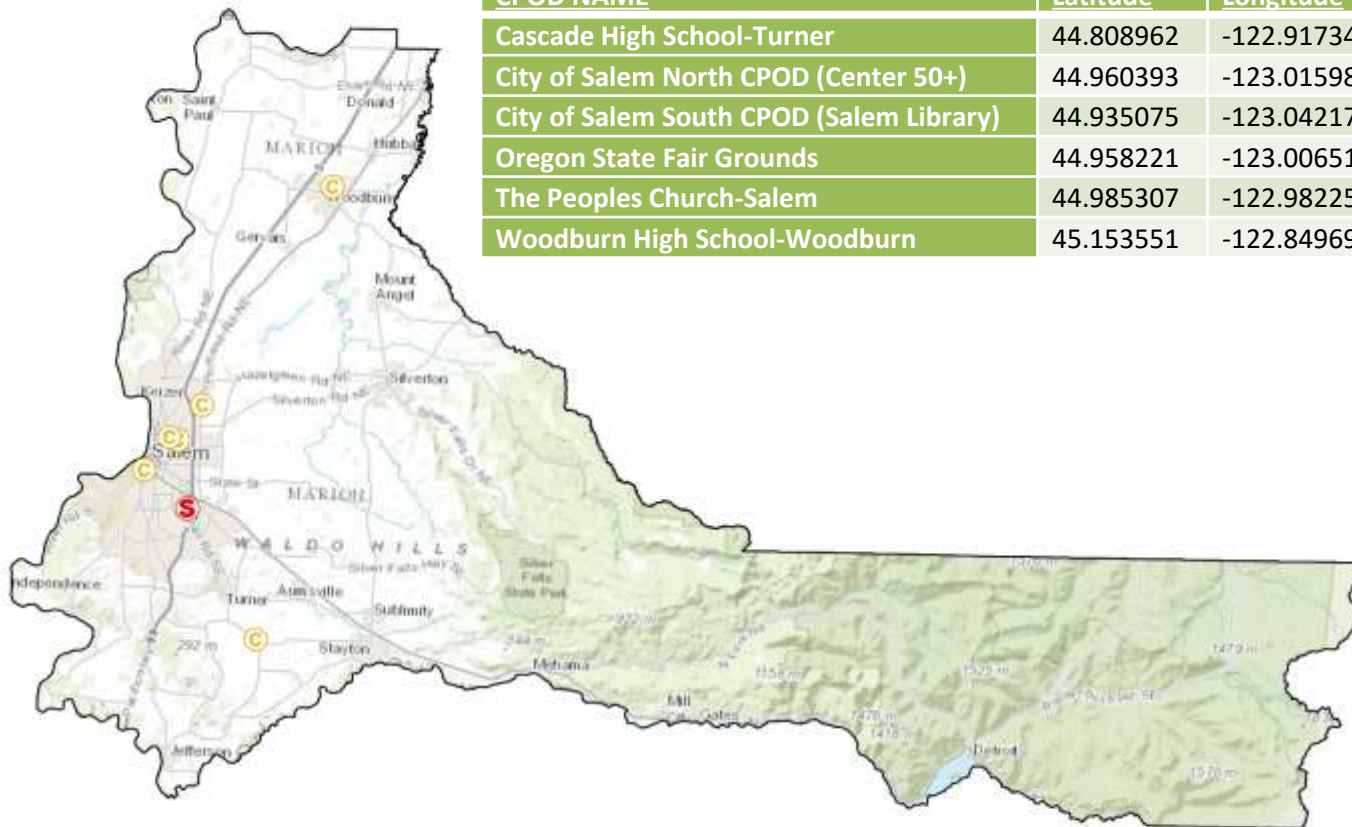
Marion County Shelters

This product is for informational purposes, and may not be suitable for legal, engineering or surveying purposes. This information or data is provided with the understanding that conclusions drawn from such information are the responsibility of the user.

+ Shelter Locations



ESF 7 – Resource Support



CPOD NAME	Latitude	Longitude
Cascade High School-Turner	44.808962	-122.917348
City of Salem North CPOD (Center 50+)	44.960393	-123.015983
City of Salem South CPOD (Salem Library)	44.935075	-123.042170
Oregon State Fair Grounds	44.958221	-123.006513
The Peoples Church-Salem	44.985307	-122.982255
Woodburn High School-Woodburn	45.153551	-122.849695

General Stats

- McNary Field is both a State Staging Area and Forward Staging Area



DPS 3/15/17

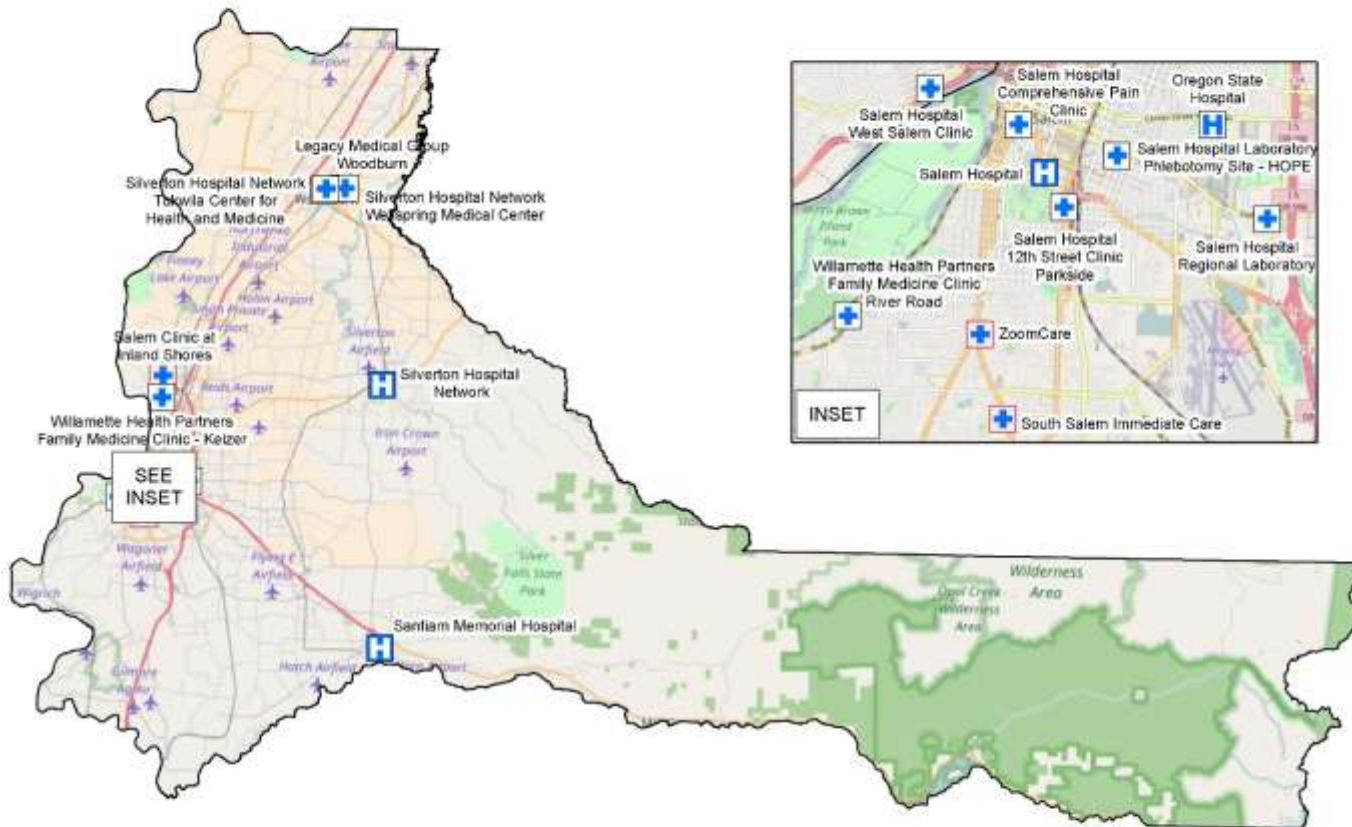
Marion County Logistics Sites

This product is for informational purposes, and may not be suitable for legal, engineering or surveying purposes. This information or data is provided with the understanding that conclusions drawn from such information are the responsibility of the user.

- State Staging Areas (SSA)
- Incident Support Bases (ISB)
- Forward Staging Areas (FSA)
- Community Points of Distribution (CPODs)



ESF 8 – Health and Medical



General Stats

- [3 Trauma Centers](#)
 - Salem Hospital (Level 2)
 - Santiam Memorial (Level 4)
 - Silverton Hospital (Level 4)



DPS 3/15/17

Marion County Hospitals and Urgent Care Centers

This product is for informational purposes, and may not be suitable for legal, engineering or surveying purposes. This information or data is provided with the understanding that conclusions drawn from such information are the responsibility of the user.

- Hospital (Trauma)
- Hospital (Non-Trauma)
- Hospital Satellites
- Urgent Care Centers



ESF 9 – Search and Rescue

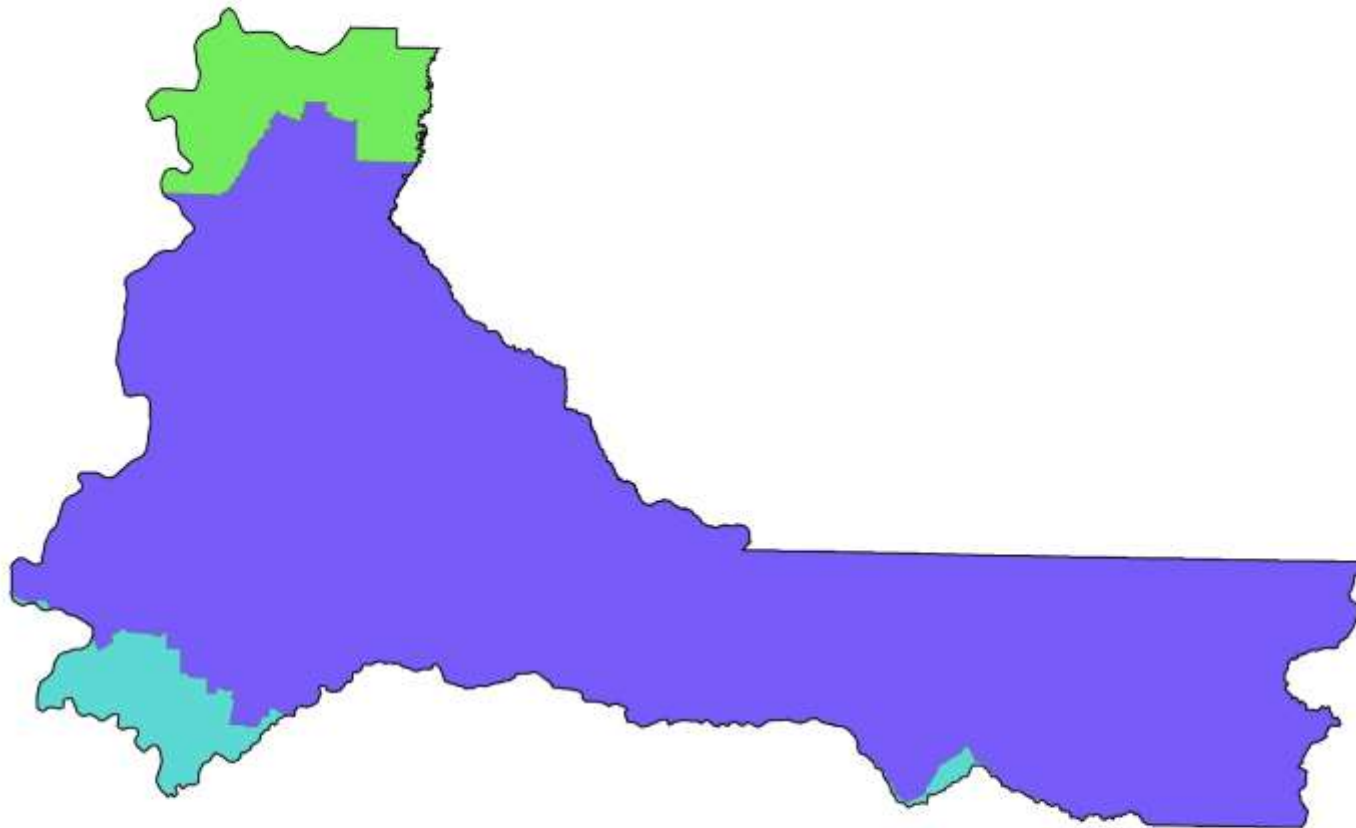


Search and Rescue Teams:

- Jeep Patrol
 - Mission: to provide search and rescue services, with an emphasis on 4 wheel drive vehicles.
- Mounted Posse
 - Mission: to provide search and rescue services, with an emphasis on horses.
- Search and Rescue Communications (SARCOM)
 - Mission: to provide radio communication for all search teams and support for base operations.
- Special Vehicles Unit
 - Mission: to provide assistance, state wide, in the search for and rescue of a person or persons lost, missing and / or injured due to, but not necessarily limited to : outdoor activities, crashes of aircraft, industrial accidents, multi-casualty incidents, or natural or terrorist related disasters.
- Team 18
 - Mission: to provide personnel for ground searches for missing persons, evidence of crimes, and other related missions.



ESF 10 – Hazardous Materials



General Stats

- The Salem Hazmat Team base is located Salem Fire Station #10 at 3601 State St, Salem



DPS 3/16/17

Marion County Hazmat Team Boundaries

This product is for informational purposes, and may not be suitable for legal, engineering or surveying purposes. This information or data is provided with the understanding that conclusions drawn from such information are the responsibility of the user.

■ Linn/Benton
■ Salem
■ Tualatin Valley



ESF 11 – Food & Water



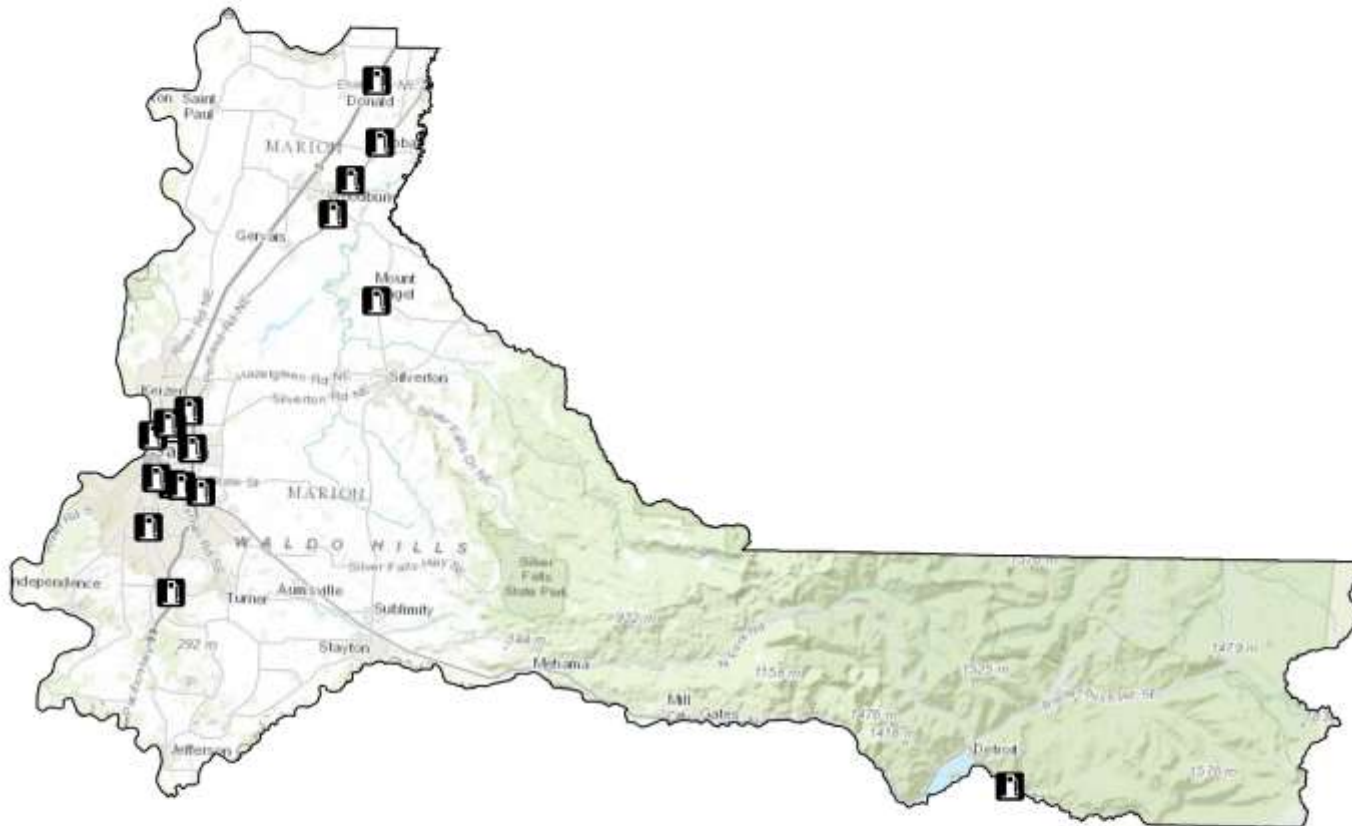


ESF 12 – Energy



General Stats

- 17 total cardlock facilities
- All liquid fuel is transported by truck/rail/pipeline from fuel storage facilities in Portland.
- Lack of capability to pump fuel locally without power.



Marion County Cardlock Facilities



DPS 3/15/17

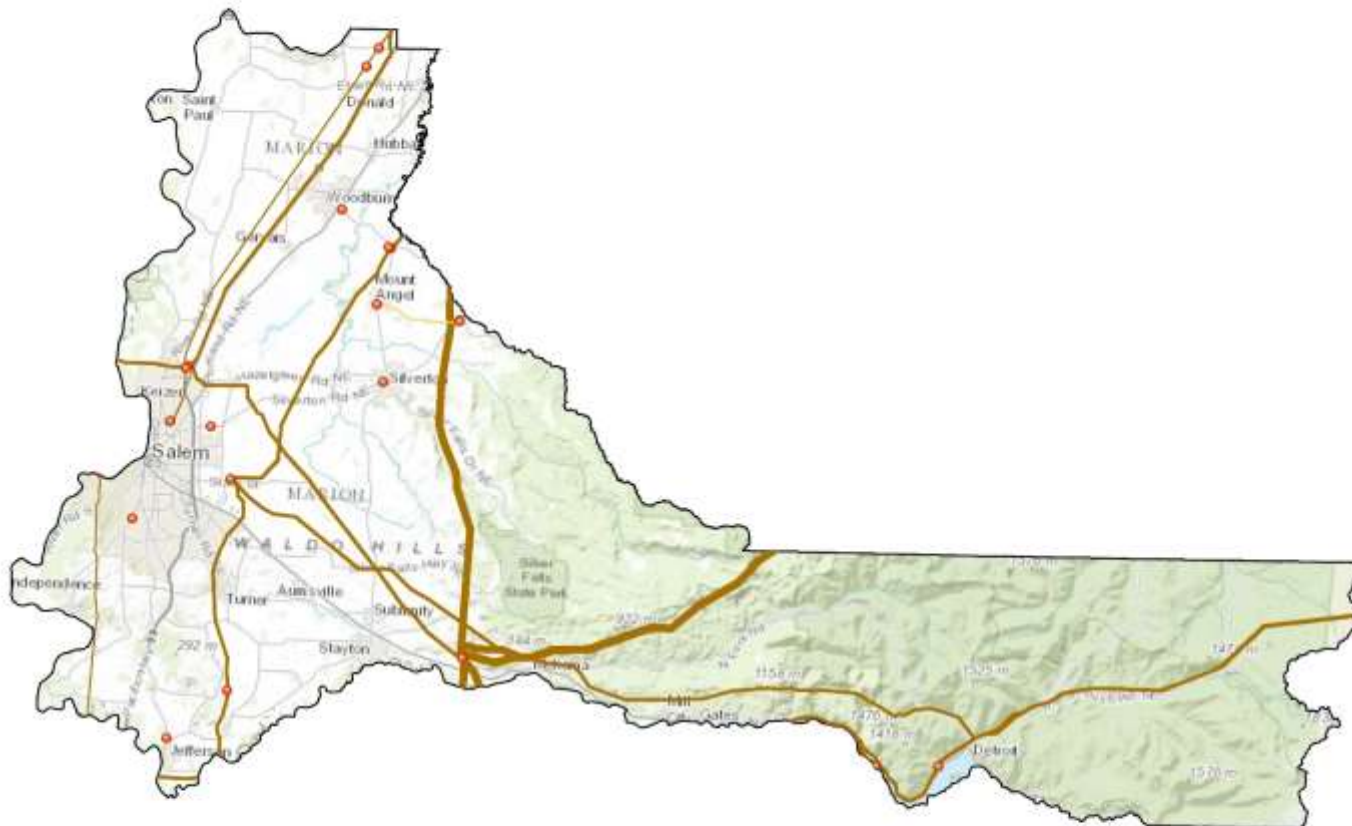
This product is for informational purposes, and may not be suitable for legal, engineering or surveying purposes. This information or data is provided with the understanding that conclusions drawn from such information are the responsibility of the user.



Cardlock Facilities



ESF 12 – Energy



Marion County Electric Transmission

This product is for informational purposes, and may not be suitable for legal, engineering or surveying purposes. This information or data is provided with the understanding that conclusions drawn from such information are the responsibility of the user.

Electric Substations

Transmission Lines

- 100-161V AC
- 230-287V AC
- 500V AC
- Unknown

General Stats

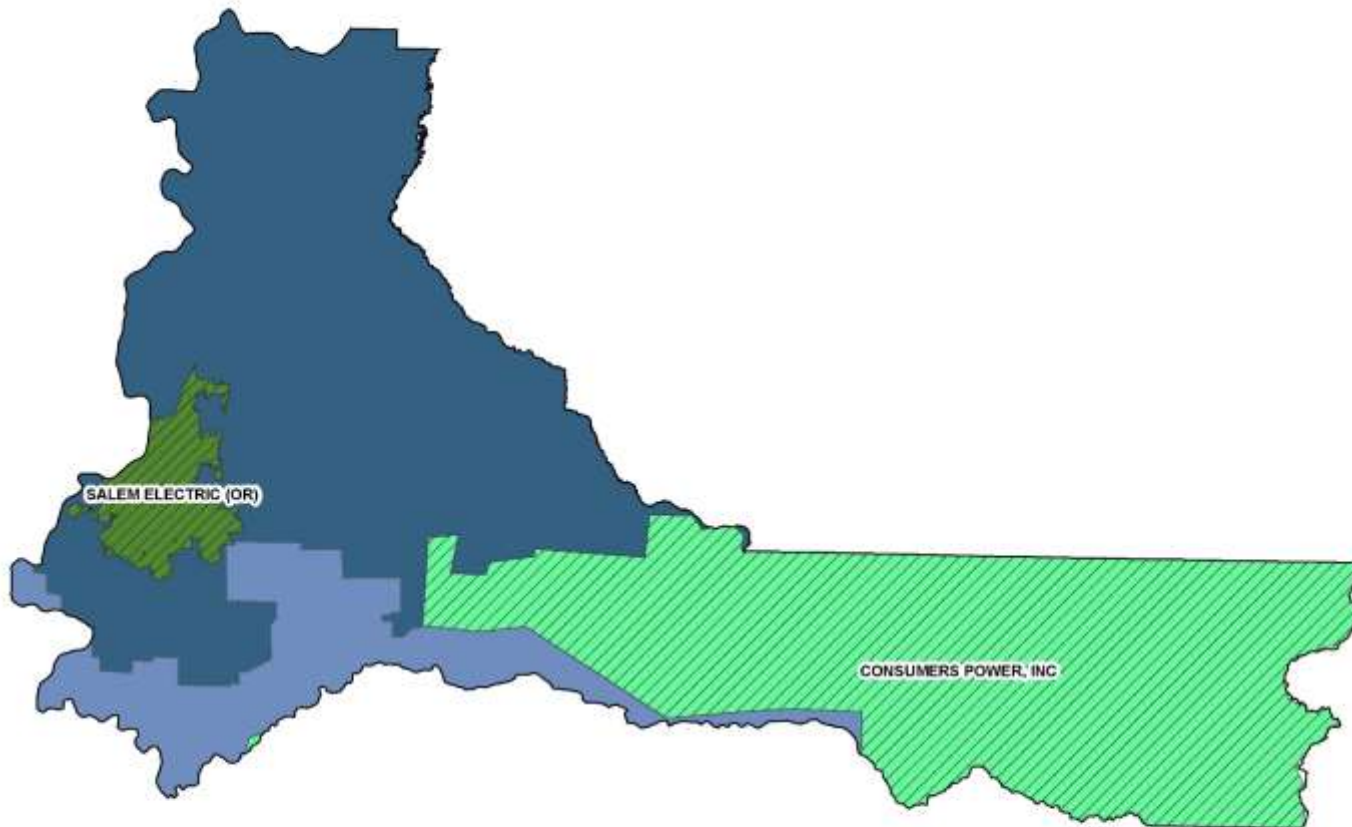
- Major lines (500 Volt AC) owned and operated by Bonneville Power Administration
- Very little power generated locally



DPS 3/15/17



ESF 12 – Energy



General Stats

- Both Salem Electric and Consumers Power are Co-op owned utilities
- Salem Electric also serves West Salem (Polk County)



DPS 4/27/17

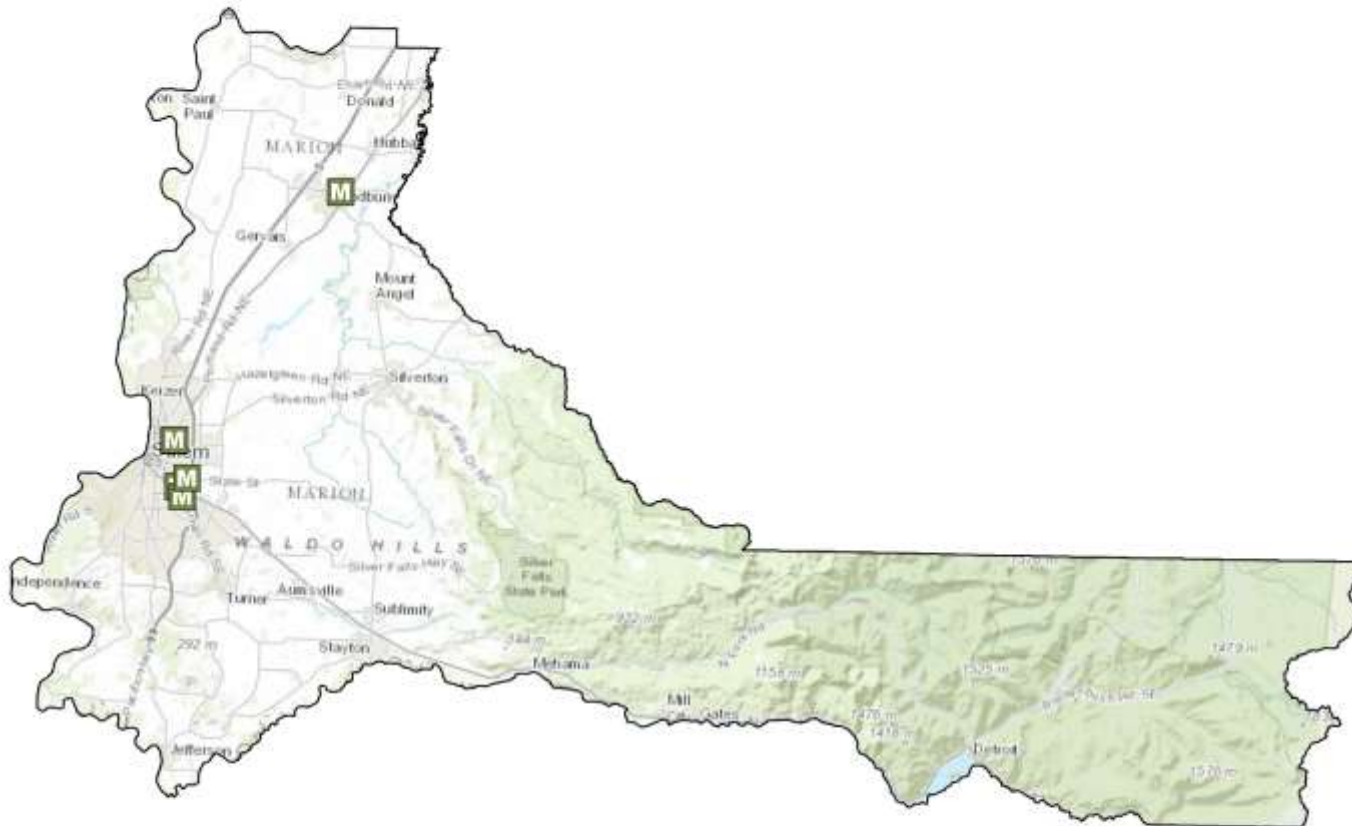
Marion County Electric Service Territories

This product is for informational purposes, and may not be suitable for legal, engineering or surveying purposes. This information or data is provided with the understanding that conclusions drawn from such information are the responsibility of the user.

CONSUMERS POWER, INC.
PACIFICORP
PORTLAND GENERAL ELECTRIC CO
SALEM ELECTRIC (OR)
☐ Indicates Co-Op Utility



ESF 13 – Military Support



Marion County Military Facilities

This product is for informational purposes, and may not be suitable for legal, engineering or surveying purposes. This information or data is provided with the understanding that conclusions drawn from such information are the responsibility of the user.

 Military Facilities

General Stats

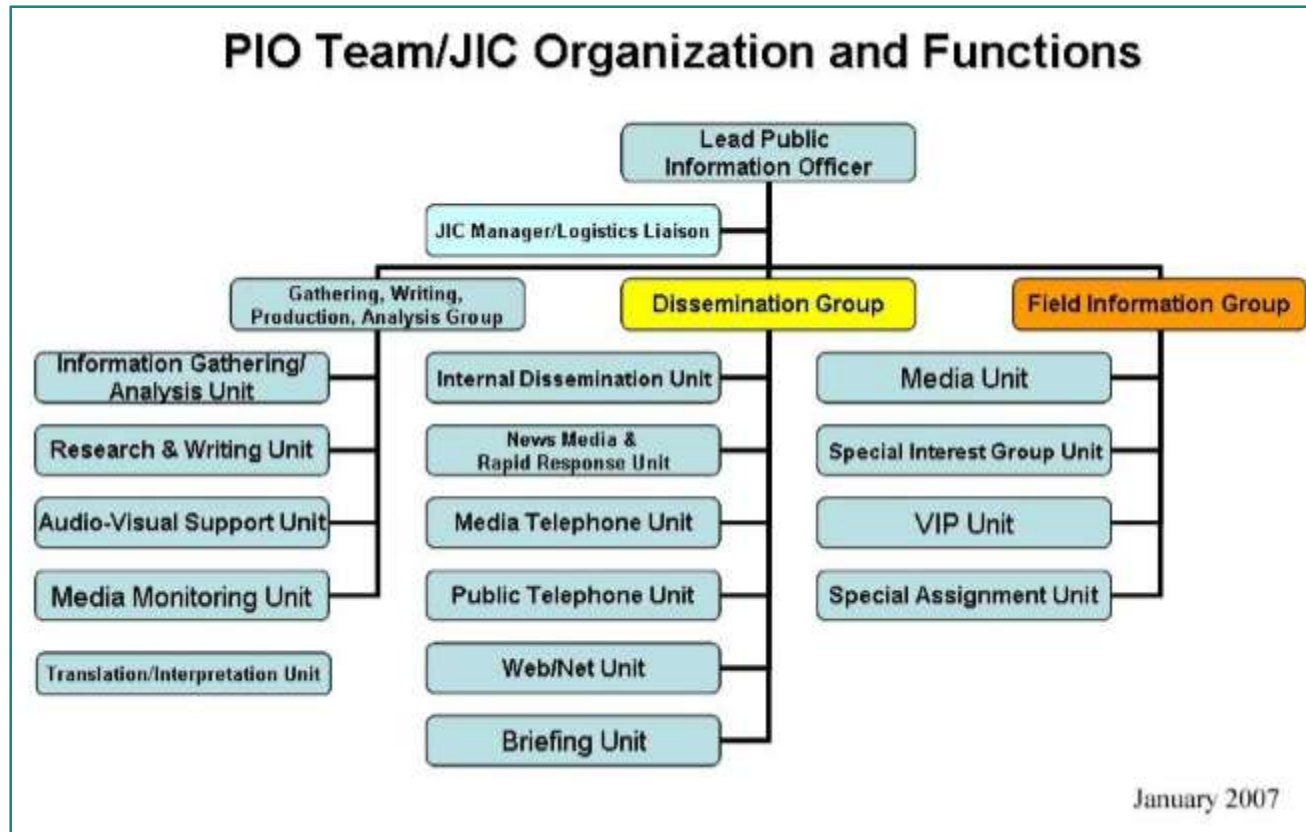
- 2 Armories (Salem and Woodburn) including 1 training facility (Salem Armory Auditorium)
- Military Department Headquarters (OMD)
- McNary Field (Airfield)
- Anderson Readiness Center



DPS 3/16/17



ESF 14 – Public Information



Social Media Sites

<https://www.facebook.com/mcemergency>
<https://twitter.com/marioncountyem>
<https://twitter.com/cityofsalem>



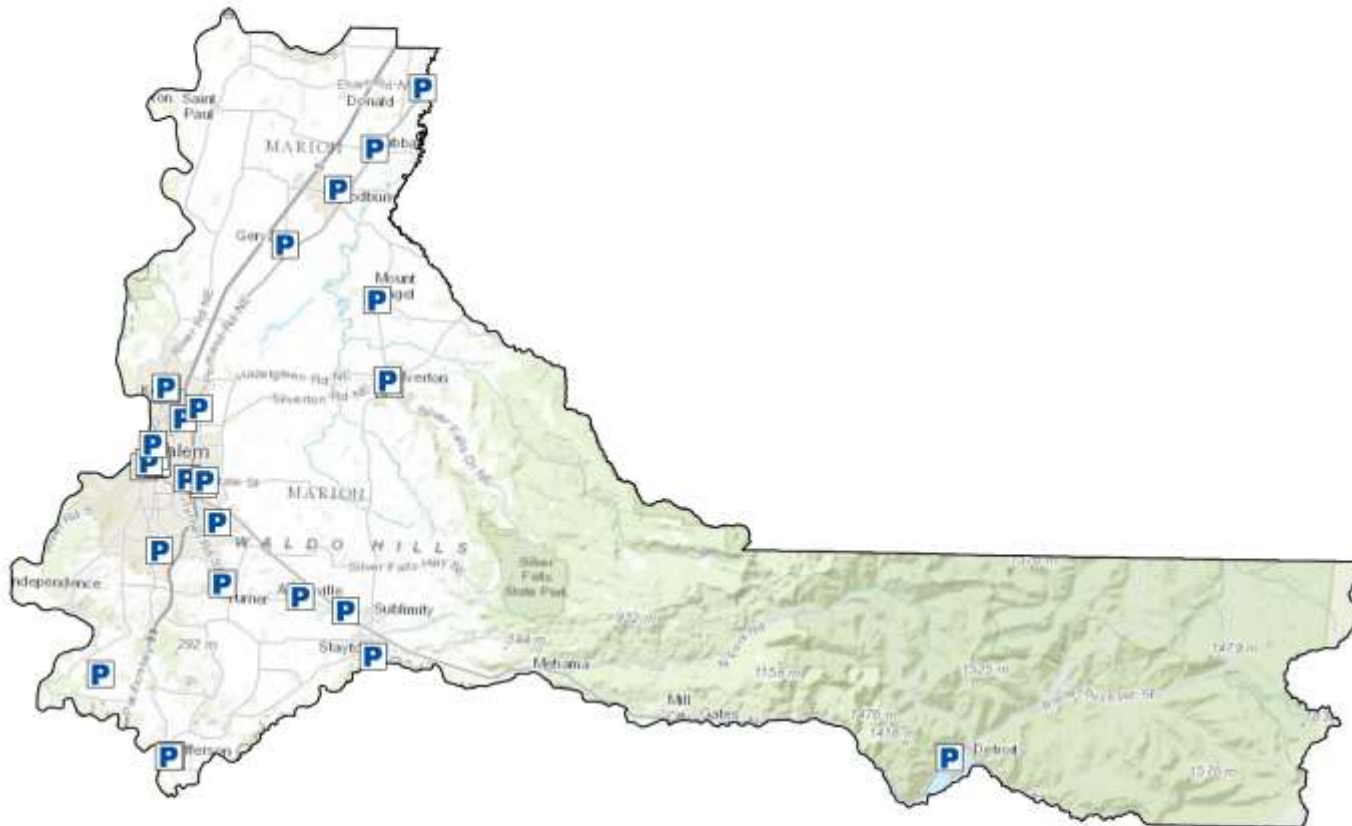
ESF 15 – Volunteers and Donations



Contact Name	COAD Name	Phone	Email
Ed Flick	Marion/Polk Counties	(503) 365-3133	eflick@co.marion.or.us
Kaylene Henderson	Marion/Polk Counties		kaylenehenderson@live.com
Mike Roth	Marion/Polk Counties	(503) 589-8152	mroth@corban.edu



ESF 16 – Law Enforcement



General Stats

- 18 different police and sheriff departments represented, including State Police, US Bureau of Land Management, US Forest Service (Willamette National Forest), and US Fish and Wildlife



DPS 3/16/17

Marion County Law Enforcement Departments

This product is for informational purposes, and may not be suitable for legal, engineering or surveying purposes. This information or data is provided with the understanding that conclusions drawn from such information are the responsibility of the user.





ESF 17 – Agriculture and Animal Protection



Lead Agencies for Support

- Marion County Emergency Management
- Marion County Extension (OSU)
- Marion Soil and Water Conservation District
- Farm Service Agency

Supporting Agencies/Entities

- Local volunteer agencies (Society for the Prevention of Cruelty to Animals, Humane Society)
- Marion County Health Department



ESF 18 – Business and Industry



Economy

Unemployment rate (2016)

7.5%

All firms (2012) – includes non-paid employees

22,621

Total employer establishments (2014) – only firms with paid employees

7,734

Median household income (2011-2015)

\$48,432

In civilian labor force 16+ (2011-2015)

61.7%

% of students eligible for free/reduced price lunch

61.7%

Primary Economy: Government, agriculture, food processing, forest products, manufacturing, education and tourism