

How Intimate Partner Violence Factors into Suicide Risk: Improve Agency Responses to Survivors Experiencing Suicidality

Presented on September 22, 2022 from 2-4pm

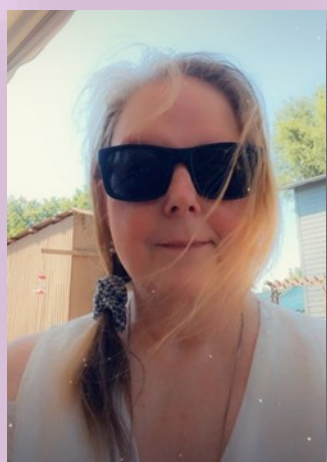
This workshop topic has the potential to activate attendees. We encourage everyone to have their own plan should any discomfort arise. We will also have a licensed clinical social worker present in case any one on one break out spaces are needed.

Overview of lessons learned from a successful pilot program six DV/SV programs throughout Oregon to equip advocates to support survivors experiencing suicidality.

- Understand the connection between trauma, abuse, and suicide risk.
- Unlearn and counter common myths about suicide.
- Learn how to successfully develop partnerships with your local mental health providers.
- Connect with additional training resources for suicidality.
- Learn why it is important to screen early & often and introduction to common suicide screening tools.
- Walk away with concrete crisis resources & safety plans to provide to survivors who disclose suicidal thoughts.

The Facilitators:

Lea Sevey



Director of Capacity & Programming
at the Oregon Coalition Against
Domestic & Sexual Violence

Aliza Tuttle



Senior Research Assistant at the
Regional Research Institute for
Human Services at Portland
State University

Jenny McKenzie Parpia, LCSW



Clinical Supervisor of the Sexual and
Domestic Violence Programs with
the YWCA of Greater of Portland.

[Click here to
register!](#)

[Upcoming SJP
Workshops](#)