



**Oregon Educators Benefit Board
Benefits Information Exchange (BIE)**

Thursday, December 6, 2012 – 10:00 a.m. to 12:00 p.m.
Department of Administrative Services – East Location
PEBB/OEBB Boardroom
1225 Ferry Street SE, Salem, Oregon



This meeting will be conducted using an online webinar service, iLinc.

Use this link to log into the meeting:

<https://oregonconnect.ilinc.com/join/bfrysbh/bcrvxvmr>

After logging in, please follow the instructions and enter your phone number in the iLinc system. The iLinc system will call you so you can participate in the meeting.

AGENDA

I. 10:00 a.m. – 10:15 a.m. Welcome / Introductions / iLinc Assistance

*Jackie Cowsill, Communications Coordinator
Mary French, Benefit Data Analyst*

II. 10:15 a.m. – 10:20 a.m. 2013 Meeting Schedule - Attachment 1

Jackie Cowsill

III. 10:20 a.m. – 10:30 a.m. OEBB Board Meeting Highlights

- September 27, 2012 meeting
- November 8, 2012 meeting

Heidi Williams, Director of Operations

IV. 10:30 a.m. – 10:40 a.m. Systems Update

- Early Retiree Administration

*Linda Tullis, Benefits Manager
Heidi Williams*

V. 10:40 a.m. – 11:05 a.m. Report Review / Demonstration – Attachment 2

Mary French

VI. 11:05 a.m. – 11:15 a.m. Communications Update

- New entities to OEBB
- Towers Watson Healthcare Reform Webinar

*Jackie Cowsill
Denise Hall, Deputy Administrator*

VII. 11:15 a.m. – 11:55 a.m.

Open Enrollment Debrief/Discussion

- Recap/Summary
 - MIT/Truven Tool
- Feedback on process, materials, interactions?
- How can we reach more members?

Denise Hall

Linda Tullis

VIII. 11:55 a.m. – 12:00 p.m.

Future Meeting Topics and Other Business

Jackie Cowsill

IX. 12:00 p.m.

Adjourn

2013

January

SUN	MON	TUE	WED	THU	FRI	SAT
		1	2	3	4	5
6	7	8	9	10	11	12
13	14	15	16	17	18	19
20	21	22	23	24	25	26
27	28	29	30	31		

February

SUN	MON	TUE	WED	THU	FRI	SAT
					1	2
3	4	5	6	7	8	9
10	11	12	13	14	15	16
17	18	19	20	21	22	23
24	25	26	27	28		

March

SUN	MON	TUE	WED	THU	FRI	SAT
					1	2
3	4	5	6	7	8	9
10	11	12	13	14	15	16
17	18	19	20	21	22	23
24 31	25	26	27	28	29	30

April

SUN	MON	TUE	WED	THU	FRI	SAT
	1	2	3	4	5	6
7	8	9	10	11	12	13
14	15	16	17	18	19	20
21	22	23	24	25	26	27
28	29	30				

May

SUN	MON	TUE	WED	THU	FRI	SAT
			1	2	3	4
5	6	7	8	9	10	11
12	13	14	15	16	17	18
19	20	21	22	23	24	25
26	27	28	29	30	31	

June

SUN	MON	TUE	WED	THU	FRI	SAT
						1
2	3	4	5	6	7	8
9	10	11	12	13	14	15
16	17	18	19	20	21	22
23 30	24	25	26	27	28	29

July

SUN	MON	TUE	WED	THU	FRI	SAT
	1	2	3	4	5	6
7	8	9	10	11	12	13
14	15	16	17	18	19	20
21	22	23	24	25	26	27
28	29	30	31			

August

SUN	MON	TUE	WED	THU	FRI	SAT
				1	2	3
4	5	6	7	8	9	10
11	12	13	14	15	16	17
18	19	20	21	22	23	24
25	26	27	28	29	30	31

September

SUN	MON	TUE	WED	THU	FRI	SAT
1	2	3	4	5	6	7
8	9	10	11	12	13	14
15	16	17	18	19	20	21
22	23	24	25	26	27	28
29	30					

October

SUN	MON	TUE	WED	THU	FRI	SAT
		1	2	3	4	5
6	7	8	9	10	11	12
13	14	15	16	17	18	19
20	21	22	23	24	25	26
27	28	29	30	31		

November

SUN	MON	TUE	WED	THU	FRI	SAT
					1	2
3	4	5	6	7	8	9
10	11	12	13	14	15	16
17	18	19	20	21	22	23
24	25	26	27	28	29	30

December

SUN	MON	TUE	WED	THU	FRI	SAT
1	2	3	4	5	6	7
8	9	10	11	12	13	14
15	16	17	18	19	20	21
22	23	24	25	26	27	28
29	30	31				

Purple = BIE Steering Committee (2pm)
Orange = BIE (10am) & Champs! (3pm)

Black = Furlough Fridays
Grey = Holidays

Blue = Board Meeting
Blue Outline only = Tentative Board Mtg



Report Mart

December 06, 2012

Getting Started

- Access reports at:
- <https://myoebb.org/oebb/!bms.main>
- Access Webinar at:
- <https://oregonconnect.ilinc.com/join/bfrysbh/bcrvxvmr>
- Place your number in the Call Me area.
- If not using iLinc Dial: 1-800-689-9374
- Passcode: 243789
- **The best method to interact with iLinc is to enter your phone number and have iLinc call you.**

iLinc | OEGB BIE Meeting

FileEditControlsToolsSessionHelp

1-800-689-9374
Moderator: 8722843

MY STATUS

SHARE

PRESENT

WHITEBOARD

WEBSYNC

POLL

MEDIA

iLinc

Attendees | 0 / 1

Mary French

Feedback

Chat

PublicPrivate

Type here to send a message

StartContent

Session Details

Session Name: OEGB BIE Meeting
Leader: Mary French
Date/Time: 06/21/2012 01:30 PM

Audio Details

You can join the teleconference portion of this session using one of the following options.

CALL ME

Ext.

With this option, iLinc will call you at the number you provide. Please follow the instructions given after you answer. If your phone system requires an elaborate method of entering an extension, we recommend you enter a direct dial number.

Dial into the teleconference
Primary Dial-In: 1-800-689-9374
Alternate Dial-In: 1-719-457-0613
Your Moderator Code: 8722843

Participant Passcode: 243789

Share your Desktop
This is the quickest way to start sharing and will share everything on your desktop.

Share a Region
A great way to keep attendees focused on the specific area you are trying to share.

Share an Application
Select the specific applications to share. Any application that is not selected to be shared will be masked if placed on top when you are sharing. Try not to bring other applications to the front when sharing.

Draw on a Whiteboard
Create a clean slate to diagram or brainstorm.

Send Quick Invitation

Send Invitation via IM (copy)

OregonConnect



Overview

- Access Report Mart
- Review New Report
- Export Report
- Print Report

Report Demonstration


- Updated report in Report Mart
 - Entity_Plan_Enrollment_Emp_Type_and_Tier
 - Subscribers_Who_Selected_Multiple_Tier_Types
 - Subscriber_Open_Enrollment_Activity
- Navigate Report Mart
 - Select report
 - Review report description
 - Enter any required parameters



OEBB - Benefit Management System - Windows Internet Explorer

https://myoebb.org/oebb/tbms.main

File Edit View Favorites Tools Help

OEBB - Benefit Management ... OEBB - Benefit Managem...

 **MyOEBB**
"Serving our members and their families"

OREGON EDUCATORS
OEBB
BENEFIT BOARD

- System Codes
- Address Setup
- Contact Setup
- Security Setup
- Plan Management
- Contact Management
- Enrollment Management
- Enrollment Requests
- Member Management
- Document Management
- Utilities
- Home Page Alerts
- Report Mart
 - Setup Report
 - Reports
- Payroll Interface
- BHS Interface
- Reports

Home | Contact Us | Help | Logout User: French-admin Mary

CRYSTAL_REPORTS

Name: Entity_Plan_Enrollment_Emp_Type_and_Tier

Description: This report summarizes the members covered by employment type and tier. This report contains drill downs to all levels.

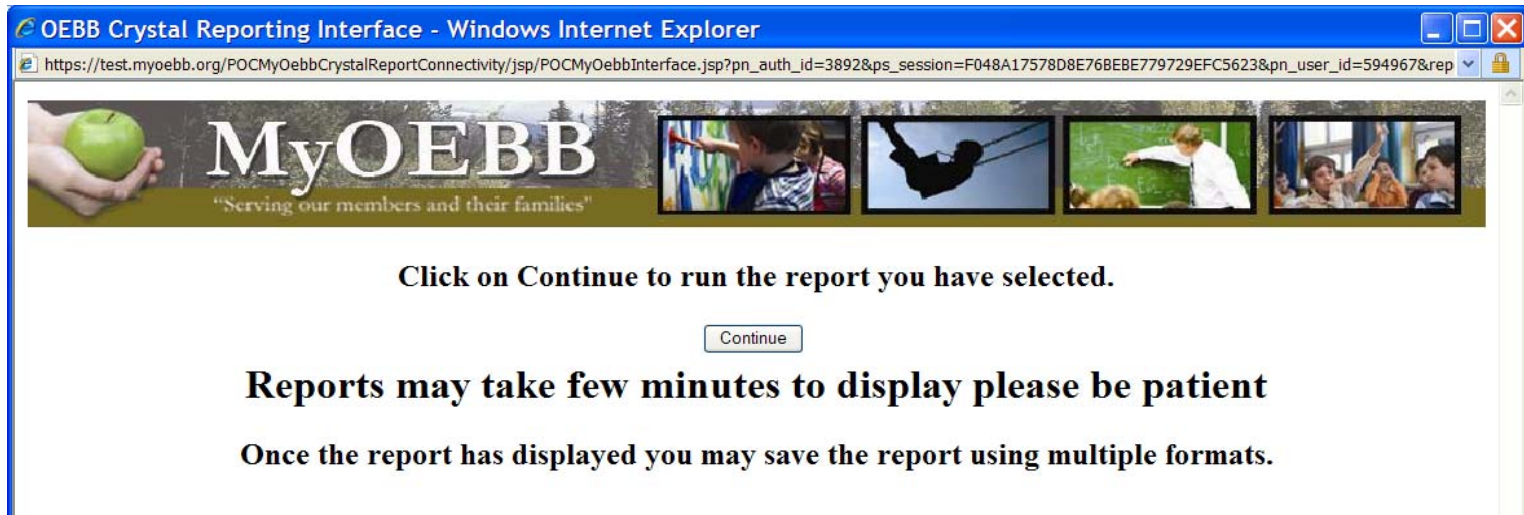
Plan Type: Medical

Entity Name: Entity Number:

End Date:

Submit Reset

- Locate report mart under the left hand navigation
- Select Reports
- Entity_Plan_Enrol



- Click on continue
- Depending on the type of report you selected this process may take time, do not click continue a second time or it will start the process over again.

Crystal Reports Viewer - Windows Internet Explorer

https://oebb.test.state.or.us/POCMyOebbCrystalReportConnectivity/jsp/CrystalReportViewer.jsp

Group Tree | 1 / 3 | 100%

Main Report

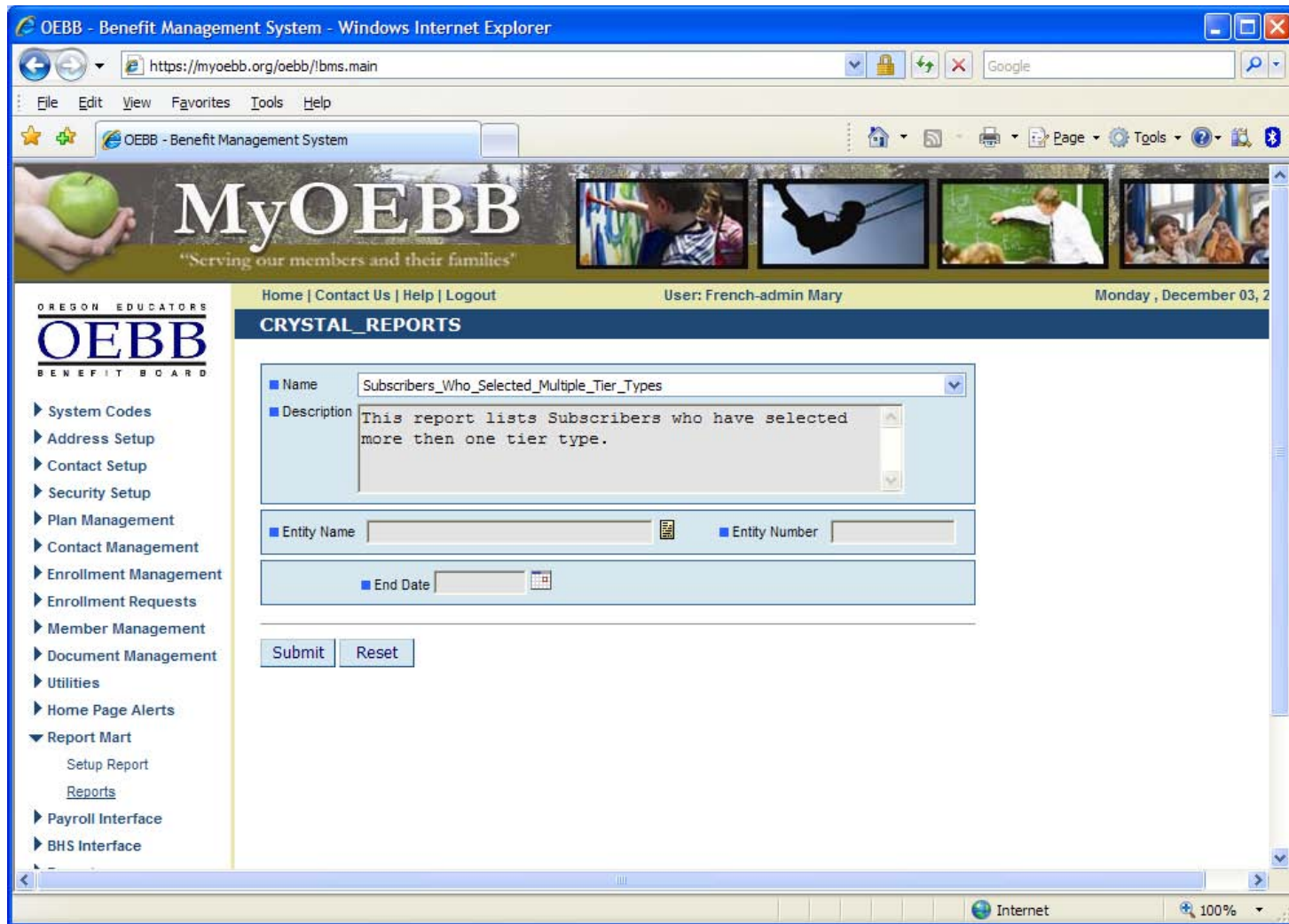
- Administrator Licensed-Full Time
- Classified-Full Time
- Classified-Part Time
- Confidential-Full Time
- Retiree-Administrator
- Retiree-Classified
- Retiree-Confidential
- Superintendent

Oregon Educators Benefit Board

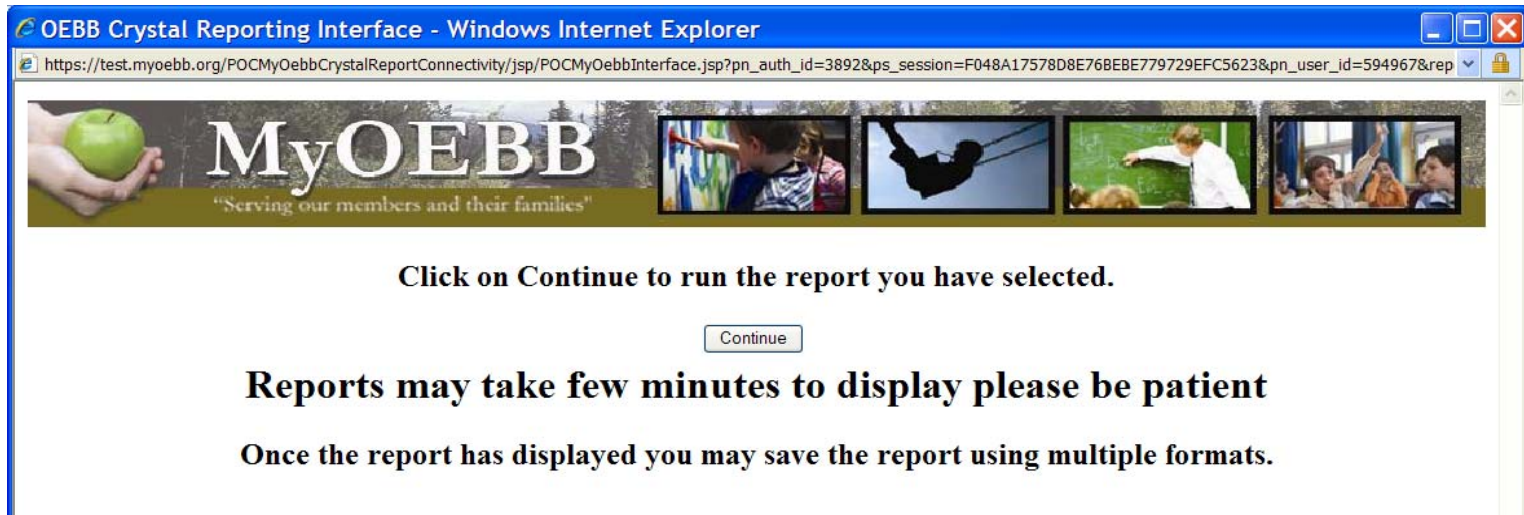
Central SD 13J Plan & Tier Enrollment Report

12/04/2012

Plan Name	Tier	Subscribers:	Dependents:	Total Membe
Administrator Licensed-Full Time				
Non Represented - Central				
Kaiser HMO Medical Plan 1/RX 1 - Composite	Employee, Spouse & Children	1	3	4
Medical Opt Out	Other Group Coverage	1	0	1
ODS Medical Plan 7/RX B - Composite	Employee & Children	1	1	2
ODS Medical Plan 7/RX B - Composite	Employee & Spouse	1	1	2
ODS Medical Plan 7/RX B - Composite	Employee Only	2	0	2
ODS Medical Plan 7/RX B - Composite	Employee, Spouse & Children	6	16	22
ODS Medical Plan 9 - Composite	Employee Only	3	0	3
ODS Medical Plan 9 - Composite	Employee, Spouse & Children	2	6	8
ODS Dental Plan 1/Ortho - Composite	Employee & Children	1	1	2
ODS Dental Plan 1/Ortho - Composite	Employee & Spouse	1	1	2
ODS Dental Plan 1/Ortho - Composite	Employee Only	2	0	2
ODS Dental Plan 1/Ortho - Composite	Employee, Spouse & Children	7	19	26
ODS Dental Plan 2/Ortho - Composite	Employee & Spouse	1	1	2
ODS Dental Plan 2/Ortho - Composite	Employee Only	3	0	3
ODS Dental Plan 2/Ortho - Composite	Employee, Spouse & Children	2	6	8
ODS Vision Plan 3 - Composite	Employee & Children	1	1	2
ODS Vision Plan 3 - Composite	Employee & Spouse	2	2	4
ODS Vision Plan 3 - Composite	Employee Only	5	0	5



- Locate report mart under the left hand navigation
- Select Reports
- Subscribers_Who_Selected_Multiple_Tier_Types



- Click on continue
- Depending on the type of report you selected this process may take time, do not click continue a second time or it will start the process over again.

Report Results

Crystal Reports Viewer - Windows Internet Explorer

https://myoebb.org/POCMyOebbCrystalReportConnectivity/jsp/CrystalReportViewer.jsp

Group Tree | 1 / 1 | 100%

Main Report

Oregon Educators Benefit Board

Subscribers with Multiple Plan Tiers

12/03/2012

Enumber	First Name	Last Name	Plan Type	Plan Tier	Plan Rate	Structu
E00691848	QTWWNJ	PTTU	Medical	Employee & Children	Composite	
E00691848	QTWWNJ	PTTU	Dental	Employee, Spouse & Children	Composite	
E00691976	XMFWTS	LNGGTSX	Dental	Employee & Spouse	Composite	
E00691976	XMFWTS	LNGGTSX	Medical	Employee Only	Composite	
E00691985	OFRJX	MTWS	Medical	Retiree & Children	Tiered	
E00691985	OFRJX	MTWS	Dental	Retiree & Spouse	Tiered	
E00691985	OFRJX	MTWS	Vision	Retiree Only	Tiered	
E00691128	HTSSNJ	UFLJ	Dental	Retiree & Spouse	Tiered	
E00691128	HTSSNJ	UFLJ	Medical	Retiree Only	Tiered	
E00049931	IFBS	GNYEJW	Medical	Employee & Spouse	Composite	
E00049931	IFBS	GNYEJW	Vision	Employee Only	Composite	

Print Report

Crystal Reports Viewer - Windows Internet Explorer

https://myoebb.org/POCMyOebbCrystalReportConnectivity/jsp/CrystalReportViewer.jsp

Group Tree | 1 / 1 | 100%

Main Report

Oregon Educators Benefit Board

Subscribers with Multiple Plan Tiers

12/03/2012

Enumber	First Name	Last Name	Plan Type	Plan Tier	Plan Rate	Structu
E00691848	QTWWNJ	PTTU	Medical	Employee & Children	Composite	
E00691848	QTWWNJ	PTTU	Dental	Employee, Spouse & Children	Composite	
E00691976	XMFWTS	LNGGTSX		Spouse	Composite	
E00691976	XMFWTS	LNGGTSX		y	Composite	
E00691985	OFRJX	MTWS		Children	Tiered	
E00691985	OFRJX	MTWS		use	Tiered	
E00691985	OFRJX	MTWS			Tiered	
E00691128	HTSSNJ	UFLJ		use	Tiered	
E00691128	HTSSNJ	UFLJ			Tiered	
E00049931	IFBS	GNYEJW		Spouse	Composite	
E00049931	IFBS	GNYEJW		y	Composite	

Print to PDF

Page Range:

☒ All Pages

☐ Select Pages

From: To:

Print to PDF:

The viewer must export to PDF to print. Choose the Print option from the PDF reader application once the document is opened.
Note: You must have a PDF reader installed to print. (eg. Adobe Reader)

Export

File Download

Do you want to open or save this file?

Name: CrystalReportViewer.pdf
Type: Adobe Acrobat Document
From: oeBB.test.state.or.us

Open **Save** **Cancel**

While files from the Internet can be useful, some files can potentially harm your computer. If you do not trust the source, do not open or save this file. [What's the risk?](#)

Save

Crystal Reports Viewer - Windows Internet Explorer

https://myoebb.org/POCMyOebbCrystalReportConnectivity/jsp/CrystalReportViewer.jsp

Group Tree | 1 / 1 | 100%

Main Report

Oregon Educators Benefit Board

Subscribers with Multiple Plan Tiers

12/03/2012

Enumber	First Name	Last Name	Plan Type	Plan Tier	Plan Rate	Structu
E00691848	QTWWNJ	PTTU	Medical	Employee & Children	Composite	
E00691848	QTWWNJ	PTTU	Dental	Employee, Spouse & Children	Composite	
E00691976	XMFWTS	LNGGTSX	Dental	Employee & Spouse	Composite	
E00691976	XMFWTS	LNGGTSX	Medical	Employee Only	Composite	
E00691985	OFRJX	MTWS			Tiered	
E00691985	OFRJX	MTWS			Tiered	
E00691985	OFRJX	MTWS			Tiered	
E00691128	HTSSNJ	UFLJ			Tiered	
E00691128	HTSSNJ	UFLJ			Tiered	
E00049931	IFBS	GNYE			Composite	
E00049931	IFBS	GNYE			Composite	

Export

File Format:

- Crystal Reports (RPT)
- PDF
- Microsoft Excel (97-2003)
- Microsoft Excel (97-2003) Data-Only
- Microsoft Word (97-2003)
- Microsoft Word (97-2003) - Editable
- Rich Text Format (RTF)
- Separated Values (CSV)
- XML

Questions and Answers

Conclusion

- Select Report from Report Mart
- Review Description
- Input Parameters
- Run Report
- Export Report
- Contact OEBC Reports for Report Needs

Contact Information

Direct Report Requests or Questions to:
oebb.reports@state.or.us

Non-Report Questions

Contact OEGB Member Services toll-free at:

1-888-4MyOEGB (1-888-469-6322)

Email: oebb.benefits@state.or.us