



2025–2026

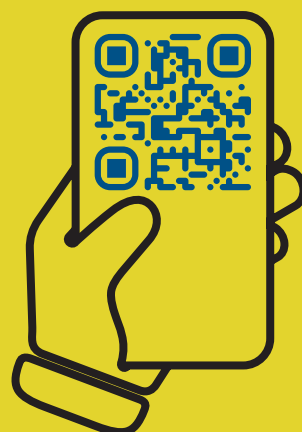
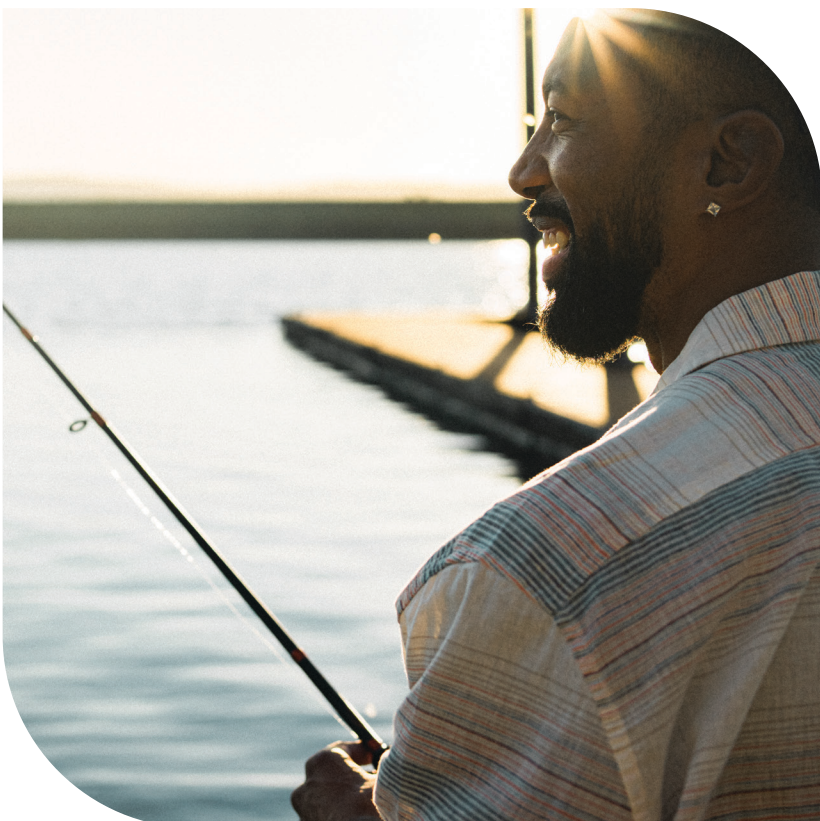
Open Enrollment is required this year!

Aug. 15–Sep. 15

Some employers use different end dates.
Confirm your deadline with your employer.

Everyone must log in to OEBBenroll.com and make their selections

Remember Open Enrollment is the one time each year you can change your benefits without a major life event or Qualified Status Change (QSC).



Scan the QR code or visit OEBBinfo.com to learn more about Open Enrollment.