



2025–2026

Open Enrollment is required this year!

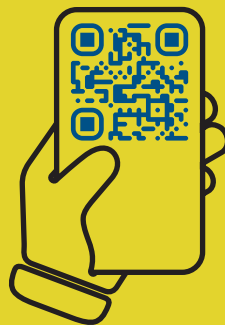
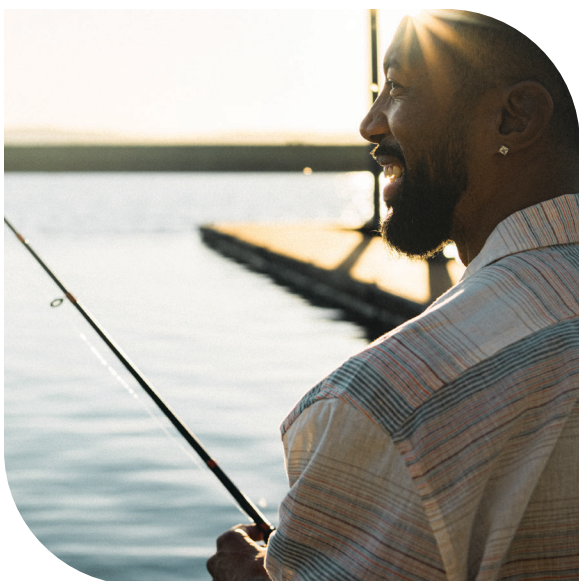
Aug. 15–Sep. 15

Some employers use different end dates.
Confirm your deadline with your employer.



Everyone must log in to **OEBBenroll.com** and make their selections.

Remember Open Enrollment is the one time each year you can change your benefits without a major life event or Qualified Status Change (QSC).



Scan the QR code or visit **OEBBinfo.com** to learn more about Open Enrollment.