



**SELF-SUFFICIENCY PROGRAMS**

# **VISION INTO ACTION**



# WHO WE ARE

Self-Sufficiency Programs (SSP) is made up of many different programs aimed at **meeting people's basic needs to support individual, family and community well-being.**

Our staff provide **benefits distribution, tailored coaching and navigation of services and supports.**

We provide services to people in Oregon **across the entire lifespan to reduce poverty and stop the cycle of poverty.**



# WHAT WE BELIEVE



Everyone in Oregon deserves **opportunities to thrive** and reach their full potential. Maximizing people's potential helps our communities thrive and benefits our entire state.



Reaching our potential is like going through a series of **locked doors** – if we don't have the keys we need, we won't be able to open the door to that potential.



The keys include the **financial resources** to meet our families' needs, having adequate and **nutritious food** on our tables, access to **affordable housing and child care**, and other social determinants of well-being.



Every day, all around the state, **Self-Sufficiency Programs staff are working to make these keys available to people**, families and communities so they can unlock the doors and thrive.



# A BRIDGE TO NEW WAYS OF SERVING PEOPLE

The Oregon Department of Human Services and Self-Sufficiency Programs are **making changes to better support people's whole well-being.**

Vision into Action describes the journey we must take to **change systems that don't work** for the people we serve and **strengthening relationships** with community. It is a bridge strategy for 2024 through a period of transition.



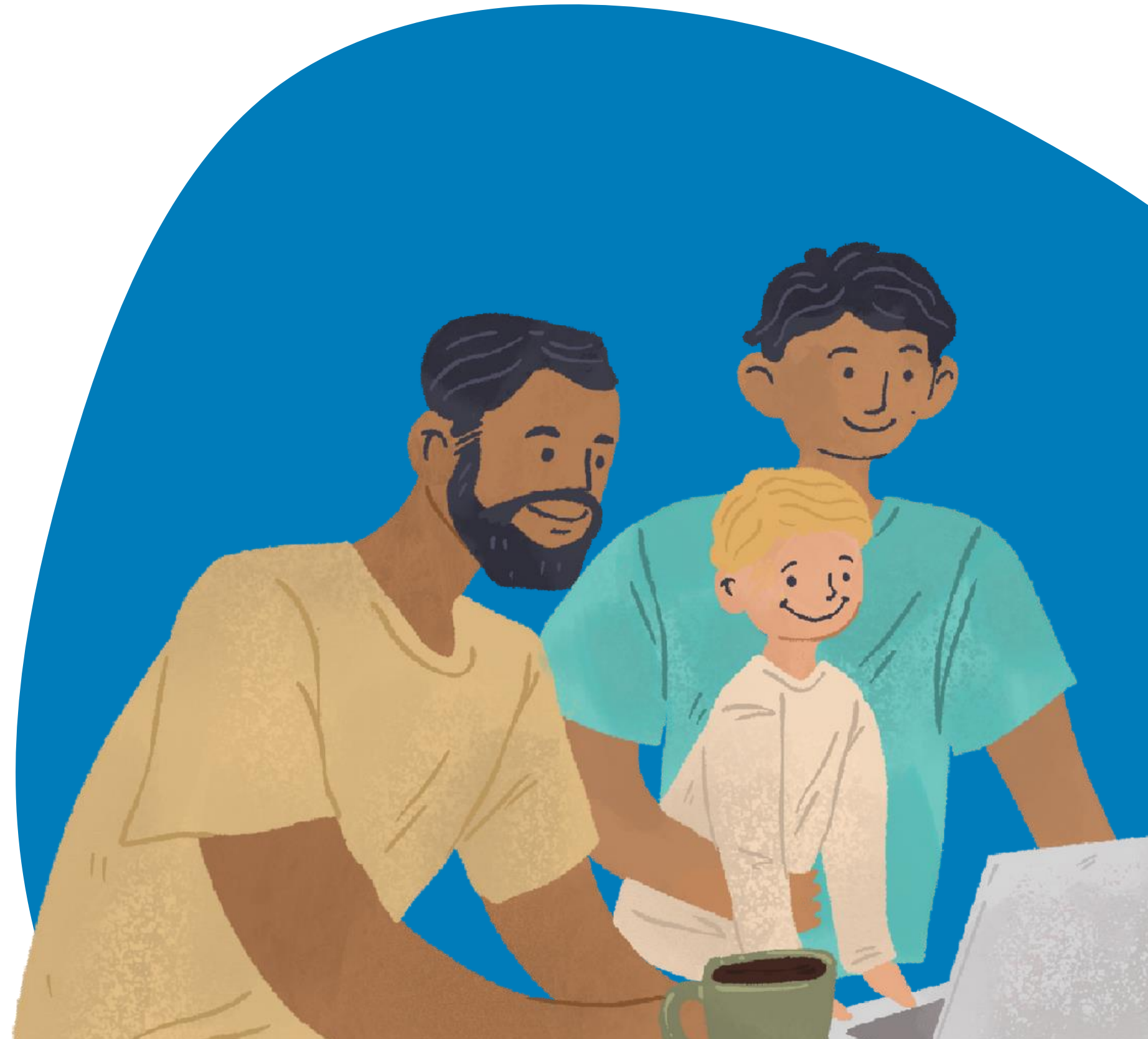
# Self-Sufficiency Program

## GOALS

- ✓ Our services **lift people out of poverty** and keep them from experiencing poverty in the first place.
- ✓ Our policies and practices **reduce the racial wealth gap** and support each person served to **achieve financial stability**.
- ✓ Our holistic services are tailored to **connect people with future-focused skills, training, and education** to secure stable and well-paying jobs connected to their long term goals.
- ✓ Our case management, resource navigation support and referrals are accessible and equitable so **people can address the barriers unique to them**.

# WHERE WE'RE GOING

- Lead with equity
- Partner and collaborate
- Honor lived experience
- Support our workforce



## OUR JOURNEY

# LEAD WITH EQUITY

**Where we were:** We believed everyone deserves the same services and should be treated equally; however, some people were still being left behind because of their race, age, disability, identity and/or where they live.

**Where we are going:** We use information from our families and communities to make our programs more flexible and fit the needs of Oregon's diverse population.



**OUR JOURNEY**

# **PARTNER AND COLLABORATE**

**Where we were:** Staff were specialists in their area but separation between SSP and other programs and agencies limited their partnerships and the ways they could serve families.

**Where we are going:** Staff have a big picture view and are encouraged and supported to look for partnership and collaboration opportunities with other ODHS programs, state agencies, Tribes and communities to make our services better.



OUR JOURNEY

# HONOR LIVED EXPERIENCE

**Where we were:** We believed the agency knew what was best for families and expected staff to administer programs in the same way for everyone we serve.

**Where we're going:** We are accountable to our communities and work as a team to identify what they need to meet their goals.



OUR JOURNEY

# GROW AND SUPPORT OUR WORKFORCE

**Where we were:** Staff were an important resource but were not always included or supported in the ways they need to succeed.

**Where we're going:** Staff have access to personalized support and opportunities that can help them grow and thrive in their career.



# WHAT IT LOOKS LIKE IN ACTION

## Lead with Equity

Doing away with full-family sanctions for TANF

## Partner and Collaborate

Contracting with community and Tribes

## Honor Lived Experience

Youth Advisory Board for YEHP

## Support Our Workforce

Position information sessions increase access




## **July 2023**

Vision into Action - A high level summary that helps focus our priorities through 2024

## **July-December 2023**

Vision into Action Guide - A practical, more detailed set of guidelines that connect the goals to tangible actions

An abstract graphic in the bottom right corner consisting of overlapping, semi-transparent geometric shapes, primarily hexagons and polygons, with thin white lines connecting various points, creating a network-like structure.



# WE NEED YOUR INPUT

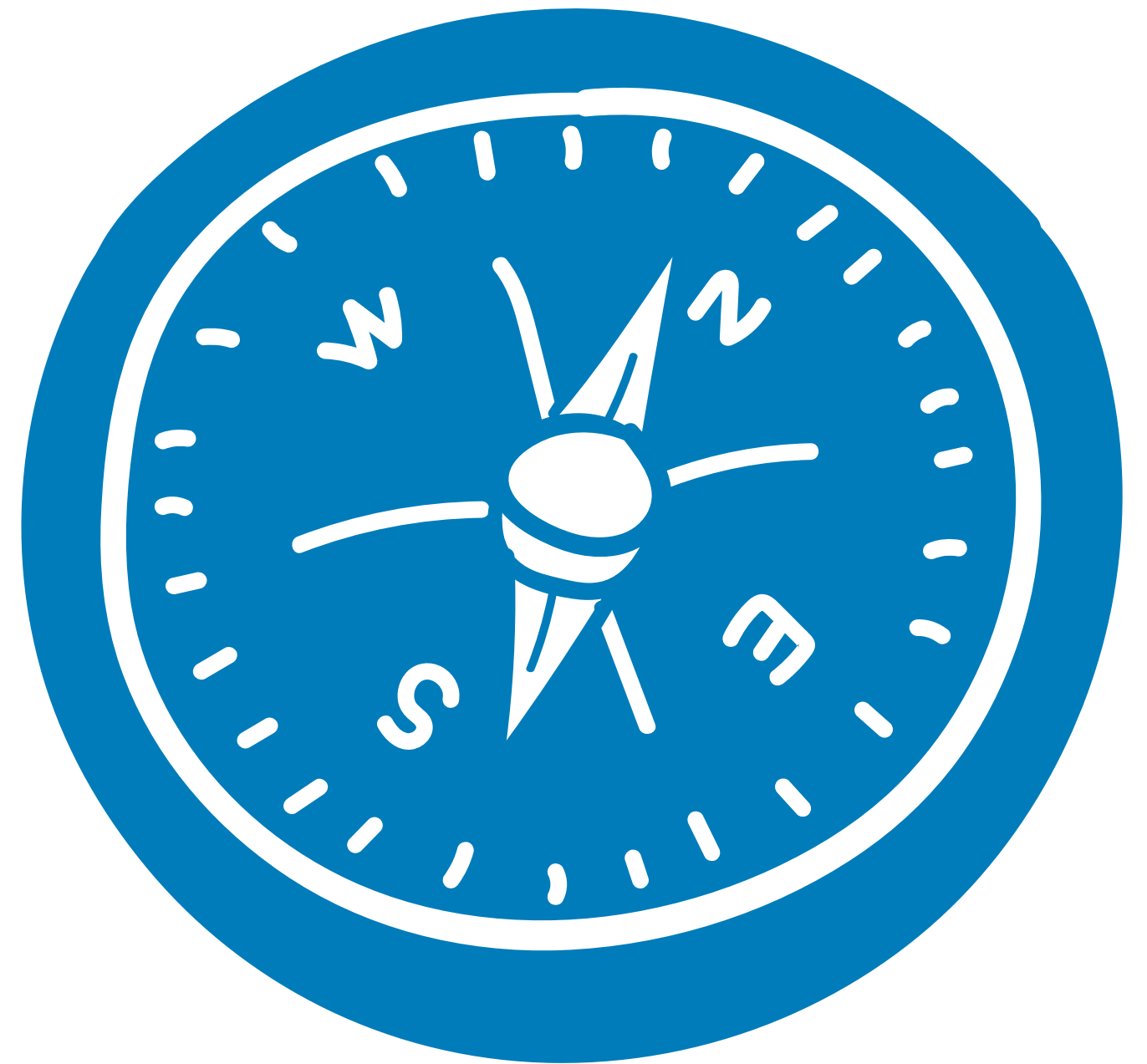
Contact us with your questions, thoughts, feedback and guidance any time at [SSP.VisionIntoAction@odhs.oregon.gov](mailto:SSP.VisionIntoAction@odhs.oregon.gov)

Provide input at the Oct. 12 [SSP Partner meeting](#) at 2 p.m.

Mark your calendars for a [community listening session](#) from 10 a.m. to noon on Nov. 2, 2023

Respond to our survey coming later this year

How else would you like to engage?



# QUESTIONS AND THOUGHTS?

