

Oregon's 1115 Medicaid Waiver 1115 Waiver HRSN Climate-Related Supports

April 11, 2024

1115 **MEDICAID WAIVER**
IMPLEMENTATION PROJECT | OREGON

Oregon
Health
Authority



Implementation Timeline

HRSN services will start in phases beginning in 2024

○ **2023**

Implementation
planning begins

○ **2024**

March: Climate-
related Supports go
live

November:
Housing services
phase-in

○ **2025**

Nutrition services
goes live

To Be Determined:

- Phased implementation of all HRSN services for all transition populations

HRSN Climate Services Overview



Climate (Launching March 2024) - Devices include:

Air conditioners for heat risks



Air filtration devices to protect against wildfire smoke



Mini fridges for temperature-controlled medications



Portable heaters for winter



Portable power supplies for home medical equipment



Who can receive HRSN climate devices?

To qualify for HRSN benefits, individuals must be **a current OHP member** AND:

Be in one or more of the eligible groups:

- An adult or youth discharged within the past year from mental health or substance use disorder Institution for Mental Disease.
- An adult or youth released within the past year from incarceration.
- Have been involved in the Oregon child welfare system at some point in their life.
- Within the next three months or past nine months, transitioning from Medicaid-only to dual coverage (receiving both Medicaid and Medicare).
- Individuals who are homeless, or at risk of becoming homeless.
- A young adult, aged 19-26, with Special Healthcare Needs (*starting in 2025*).

In addition to being an OHP member and being part of an eligible group, they also need to meet **additional eligibility criteria depending on which HRSN service they are applying for.**

Eligibility Framework for Climate Devices

1

Is a Current OHP Member and Part of an Eligible Group

-  An adult or youth discharged from an IMD.
-  An adult or youth released from incarceration.
-  Involved in the child welfare system.
-  Transitioning from Medicaid-only to dual coverage.
-  At risk of becoming houseless.

2

Has a Clinical Need for a Specific Climate Device



A health condition that is worsened by heat may qualify for an **air conditioner**.



A health condition that is worsened by cold may qualify for a **portable heater**.



A health condition that is worsened by compromised air quality may qualify for an **air filtration device**.



Individuals at risk of power outages and rely on medical devices like ventilators may qualify for a **portable power supply**.



Individuals at risk of power outages and rely on medication requiring temperature control may qualify for a **mini fridge**.

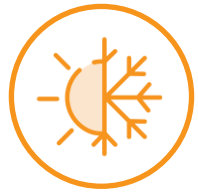
3

Social Need for a Device

OHP members in an Eligible Group with a device-specific clinical need **must also**:

- **Not already have a climate device** sufficient to meet their needs, and
- **Be able to use the device safely** in their primary residence

(Not pictured above: Young Adults with Special Health Care Needs, slated to go live 1/1/25)



Climate Device Limitations

- **Ensuring Members Do Not Already Have a Device Sufficient to Meet Their Needs.** Reasonable efforts are made to determine whether in the last 36 months, the member already has / received a climate device sufficient to meet their medical needs. Members cannot receive a replacement device more than once during a 36-month period.
- **Replacing Filters for Air Filtration Devices (AFDs).** Members are eligible for up to three replacement filters for every 12-month period following delivery of the device.
- **Device Failure.** Most devices should include warranty within one year of device delivery. If outside warranty period, or damage is not covered by warranty, CCOs should replace or repair the device so long as the individual is still eligible for the device.
- **Utility Costs.** Under HRSN, utility costs cannot be paid for. CCOs may be able to help with increased utility costs under “flexible services” or HRS. Other programs may be available for utility assistance.

Member Steps at a Glance

1



Learn about options and get started.

Learn about the different ways you can get more information and apply for HRSN services.

2



Complete the screening process.

Learn how to apply and complete the screening process.

3



Receive decision from care coordinator (CCO or Open Card Provider).

Learn how you will be told if you are eligible or not eligible and what you can do next.

4



Receive Health-Related Social Needs (HRSN) services:

Including climate, housing or nutrition services.

5



Use my HRSN services and get help when needed.

Learn where you can go for help with your benefits.

Waiver and Health-Related Social Needs Resources

- [1115 Waiver Webpage](#)
- [1115 Waiver HRSN Webpage](#)
- [Waiver Newsletter](#)
- HRSN Forms
 - [HRSN Request Form for Climate Devices](#)
 - [Information Sharing Authorization Form](#)
- HRSN Member Journey
 - [English](#)
 - [Spanish](#)
- [HRSN Climate Benefit Webpage](#)
 - Climate-Related Supports Fact Sheet (available in 7 languages)
 - Climate-Related Supports FAQ (available in 7 languages)
- [HRSN Climate Fee Schedule](#)
- [HRSN Outreach & Engagement Fact Sheet](#)
- HRSN Provider Journey
 - [English](#)
 - [Spanish](#)

Questions?



HRSN Outreach & Engagement Services

HRSN Outreach and Engagement (O&E) Overview

Outreach and Engagement is one of the HRSN Services approved in Oregon's 1115 Waiver.



**O&E is
intended to:**

- Identify members who may be eligible for HRSN services and help them understand the process to access needed services in a culturally-specific and responsive manner
- Connect members to HRSN, healthcare, and non-healthcare services to address social determinant of health needs
- Give individuals the opportunity to choose whether they would like to access the additional HRSN benefits

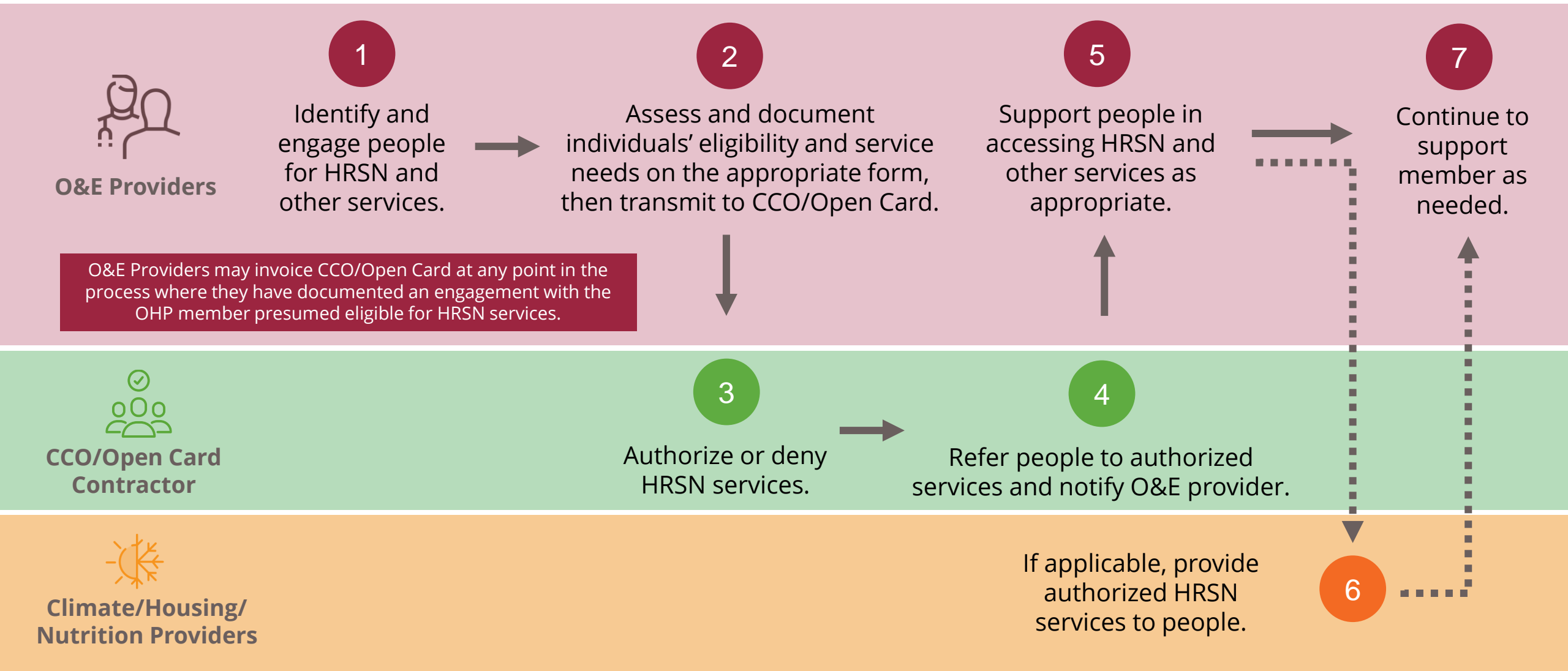
HRSN Outreach and Engagement Activities for Climate



The following activities are approved in the CMS HRSN Services Protocol and went live March 1, 2024:

- ✓ **Required:** Attempting to locate, contact, and help individuals who may be eligible for HRSN services.
- ✓ **Required:** Determining whether individuals are enrolled in a Coordinated Care Organization (CCO) or Open Card. This includes verifying which CCO the member is enrolled in as applicable.
- ✓ **Optional:** Sending the HRSN request to the member's CCO or to OHA for Open Card members. The request can be on the [HRSN Request Form](#) or in a different format.
- ✓ **Optional:** Providing members with information and support to connect with other services they need. Other services include medical, peer, social, educational, or legal services.

How Will the O&E Process Work?



Questions?

Appendix

Climate Device-Specific Clinical Risk Factors

- Schizophrenia spectrum and other psychotic disorders
 - Bipolar and related disorders
 - Major depressive disorder with an acute care need in the past 12 months including a suicide attempt, crisis services utilization (emergency department, mobile crisis team, etc.), acute psychiatric hospitalization, or residential treatment
 - One or more of the following substance use disorders: alcohol use disorder, hallucinogen use disorders, inhalant use disorder, opioid use disorder, stimulant use disorder
 - Major neurocognitive disorders
 - Any sensory, physical, intellectual, or developmental disability that increases health risks during extreme climate events
 - Child less than 6 years of age and currently has, has a history of, or is at risk for at least one high risk condition
 - Pregnant and currently has, has a history of, or is at risk for at least one high risk condition
 - Adult 65 years and older and currently has, has a history of, or is at risk for at least one high risk condition
 - Chronic cardiovascular disease, including cerebrovascular disease and heart disease
 - Spinal cord injury
 - In-home hospice
 - Chronic lower respiratory condition
 - Chronic kidney disease
 - Diabetes mellitus, requiring any medication, oral or insulin
 - Multiple sclerosis
 - Parkinson's disease
 - Previous heat-related or cold-related illness requiring urgent or acute care, e.g. emergency room and urgent care visits
 - Individual requires home oxygen use: home oxygen, oxygen concentrators, home ventilator
 - Individual uses medications requiring refrigeration including Enteral and parenteral nutrition
 - Individual needs durable medical equipment (DME) requiring electricity for use including assistive technologies requiring electricity necessary for communication or ADLs
 - Other conditions approved by medical exception in an individual review
- AC, air filtration, heaters risk factors
 - Additional AC and heater risk factors
 - Additional air filtration risk factors
 - Mini-refrigerator risk factors
 - Portable power supply risk factors